

DEVELOPING A POSITIVE IMPACT

RESPONSIBILITY IN ACTION

Through environmental sustainability, we want to make a positive impact on the world our children will inherit.

CLIMATE CHANGE

Reducing our carbon emissions

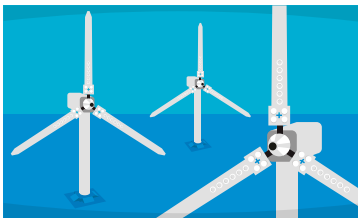
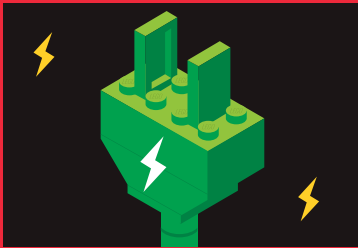
RESOURCES

Responsible sourcing and use of materials

RENEWABLE ENERGY

GOAL

To be supplied by 100% renewable energy by 2020



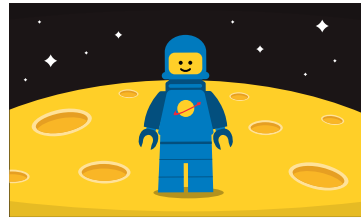
Approximately **400 million** euros have been invested in an offshore wind farm.

These turbines produce enough energy to power nearly **100,000** houses!

LEGO GROUP EMISSIONS

GOAL

2.5% energy efficiency year over year to be carbon positive by 2016



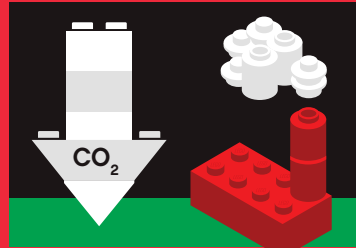
Since 2009, we have increased our energy efficiency by more than 30%.

In 2013 alone, **6,500 tonnes** of CO₂ was reduced. That is equivalent to flying from the earth to the moon and back about **30** times!

SUPPLIER EMISSIONS

GOAL

CO₂ reduction program across supplier base by 2020



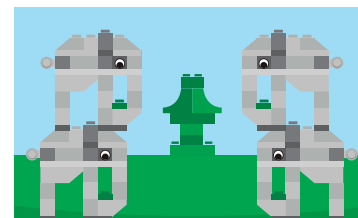
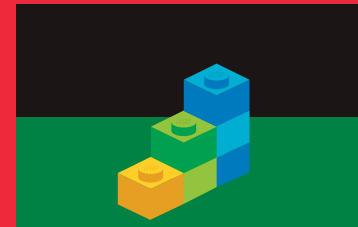
The supplier program, known as Engage2Reduce, is part of our World Wildlife Fund Climate Savers Partner commitments.

We are proud to be the **1st** and only toy company to be a WWF Climate Savers Partner!

MATERIALS

GOAL

100% FSC certified print and packaging by 2016 and implement sustainable alternatives by 2030



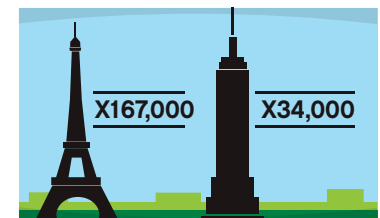
90% of LEGO packaging is FSC certified. Our Green Box Initiative to reduce the size of packaging has saved a projected **6,000 tonnes** of cardboard.

This savings is equivalent to the weight of approximately **1,800** African elephants. Now that's a lot of elephants!

WASTE

GOAL

Achieve 95% landfill diversion by 2016 and zero production waste by 2020



We recycle approximately **90%** of all production waste, which weighs around **13,000 tonnes** or roughly **5.25 billion** bricks.

If you stacked those bricks on top of each other it would reach the height of **34,000** Empire State Buildings or **167,000** Eiffel Towers!



Learn more about our responsibility efforts:
LEGO.com/responsibility



LEGO, the LEGO logo, the Brick and the Knob configurations and the MiniFigure are trademarks of the LEGO Group. ©2014 The LEGO Group.

