



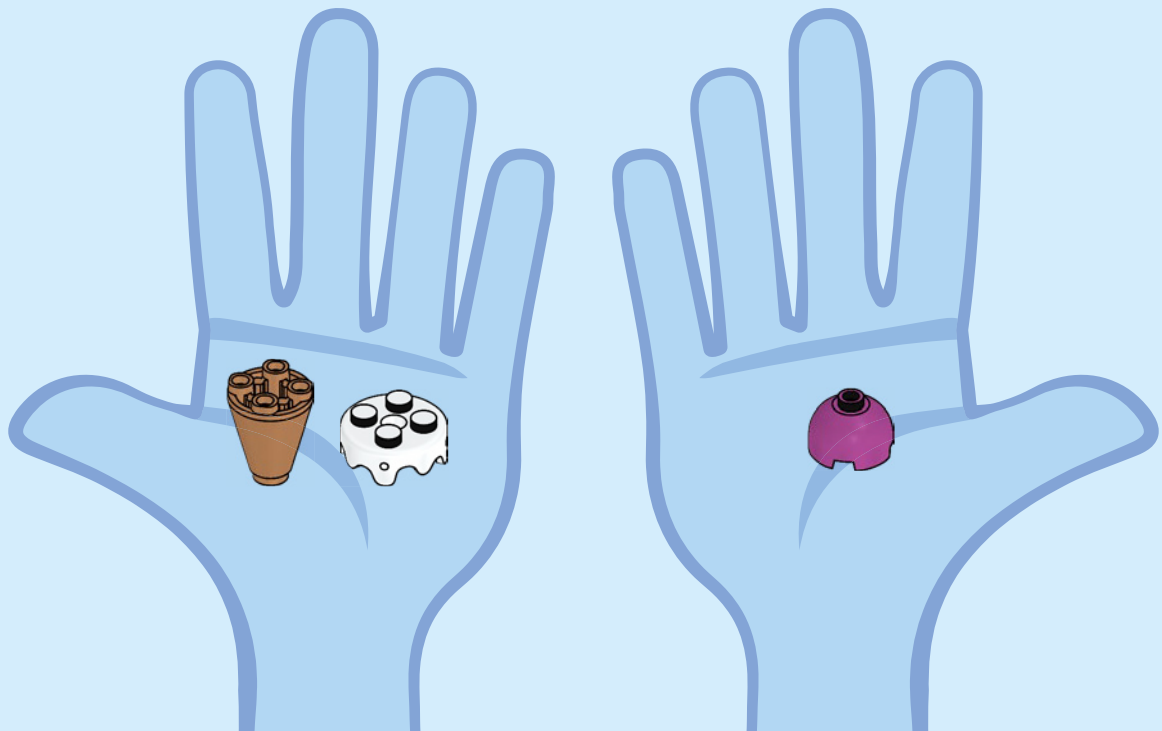
11217



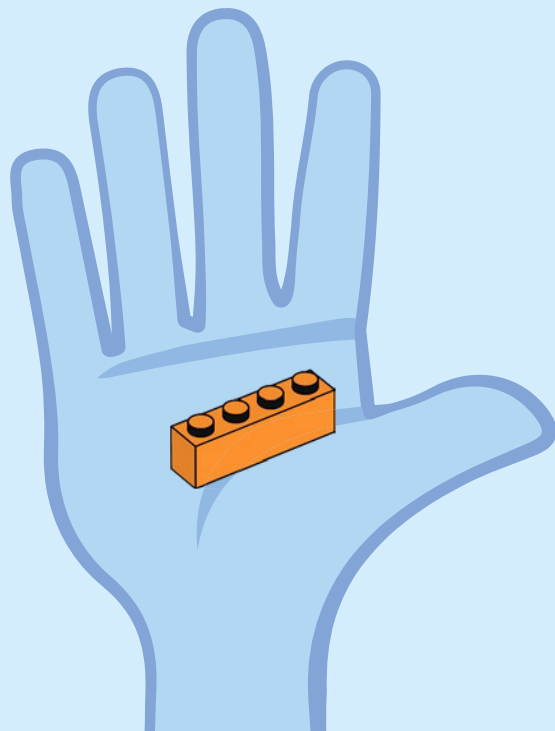
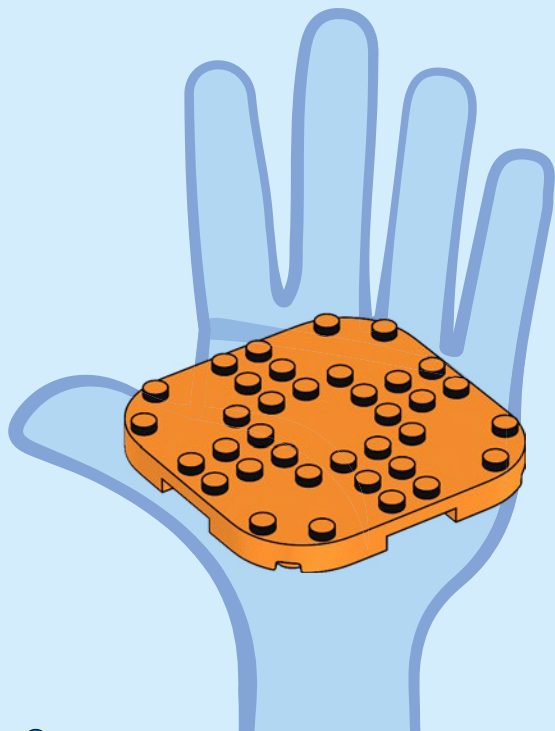


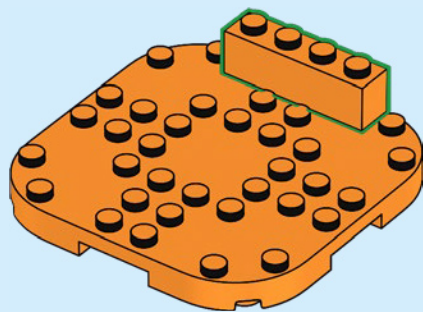
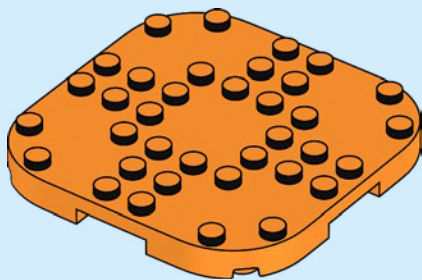
MUM

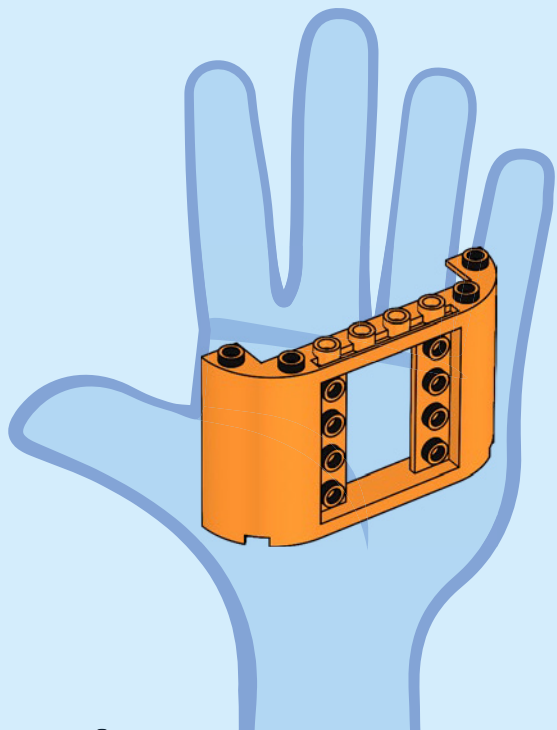


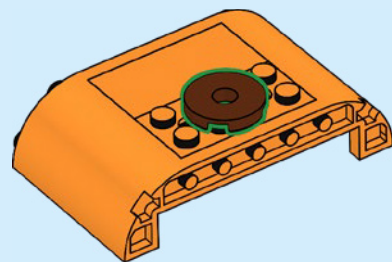
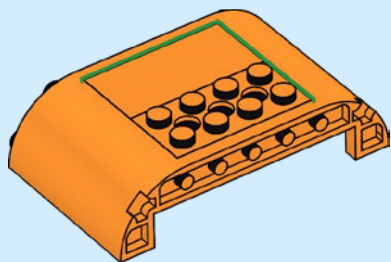
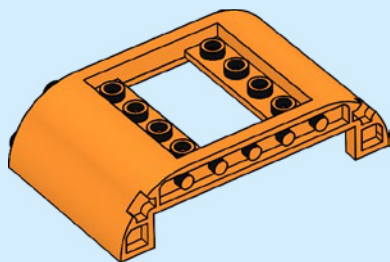


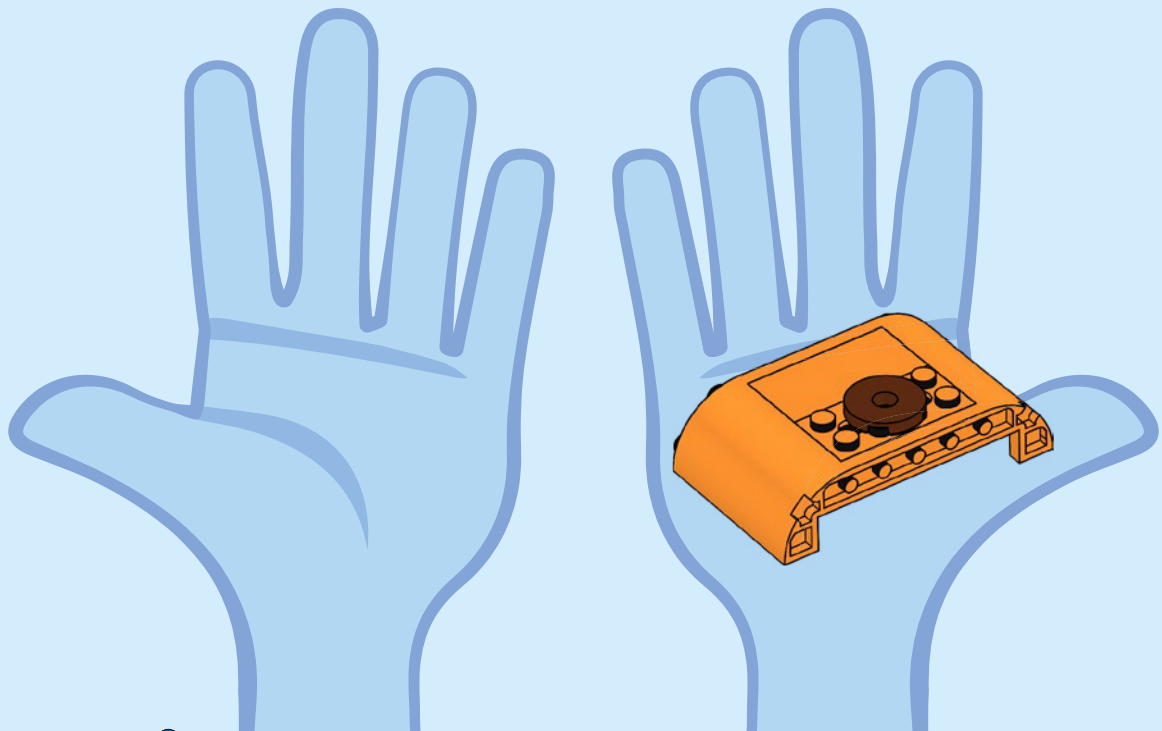


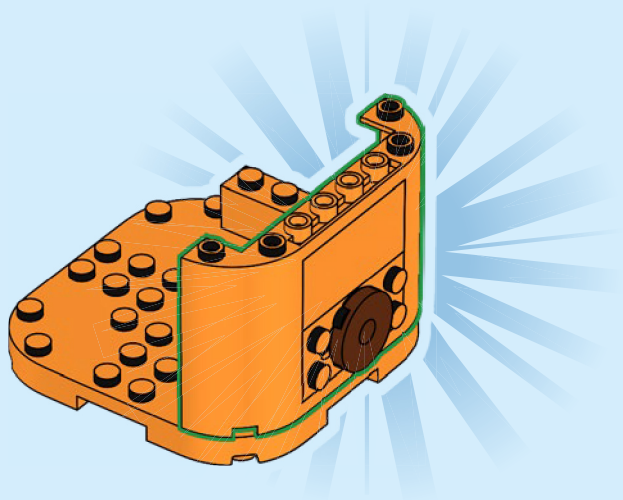


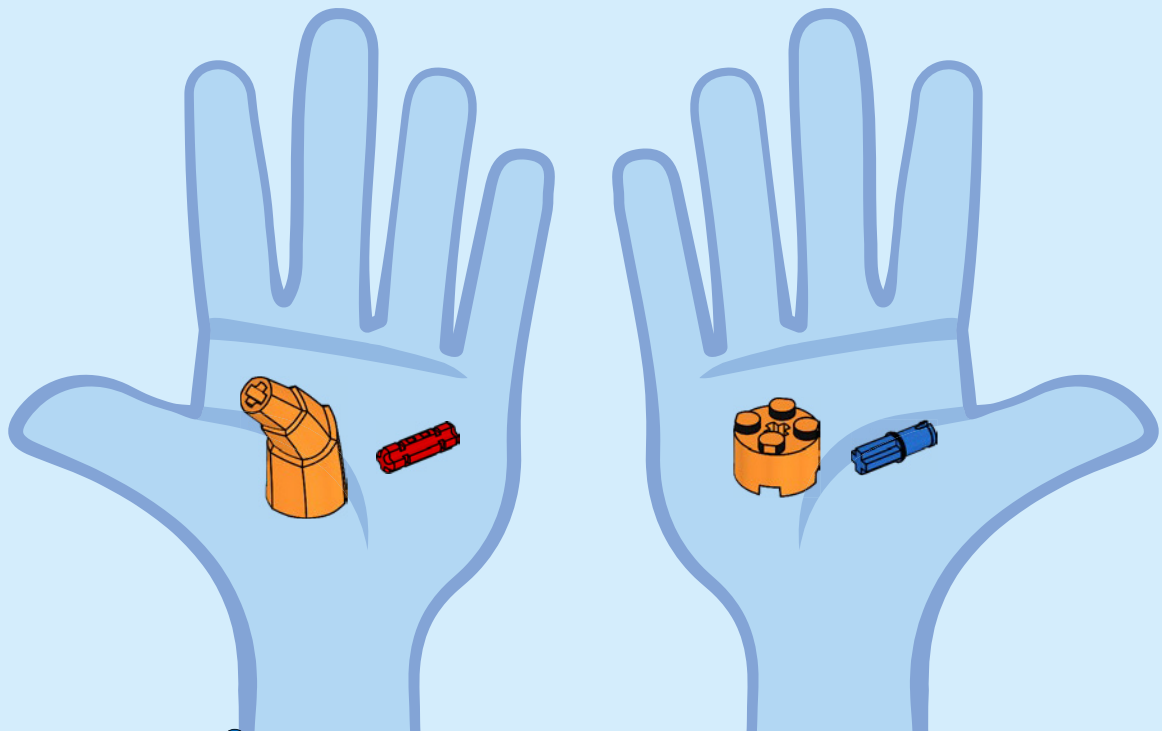


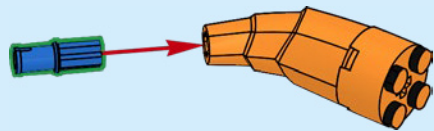
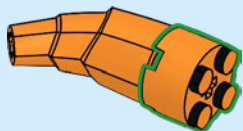
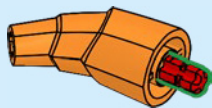
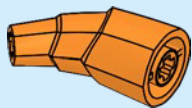


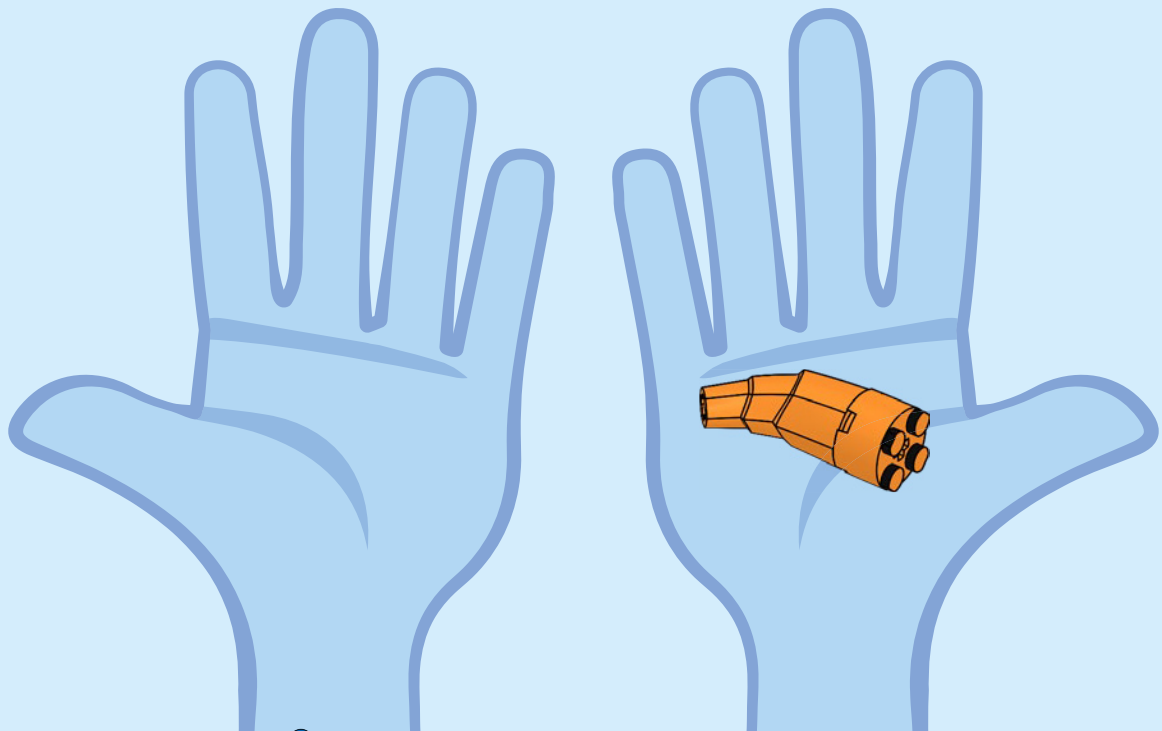


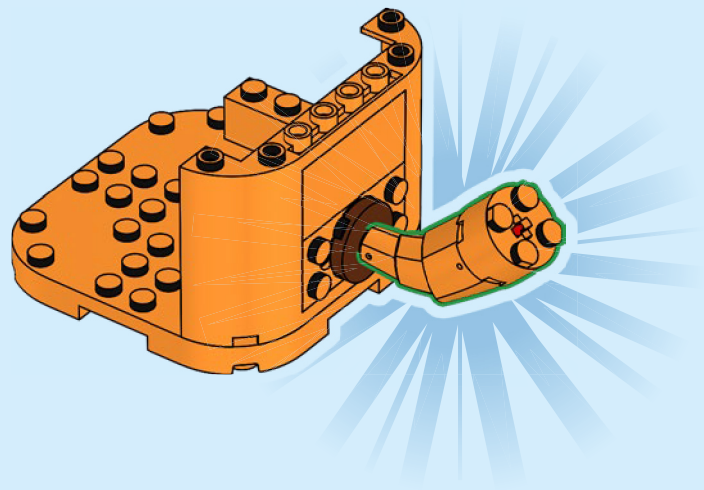


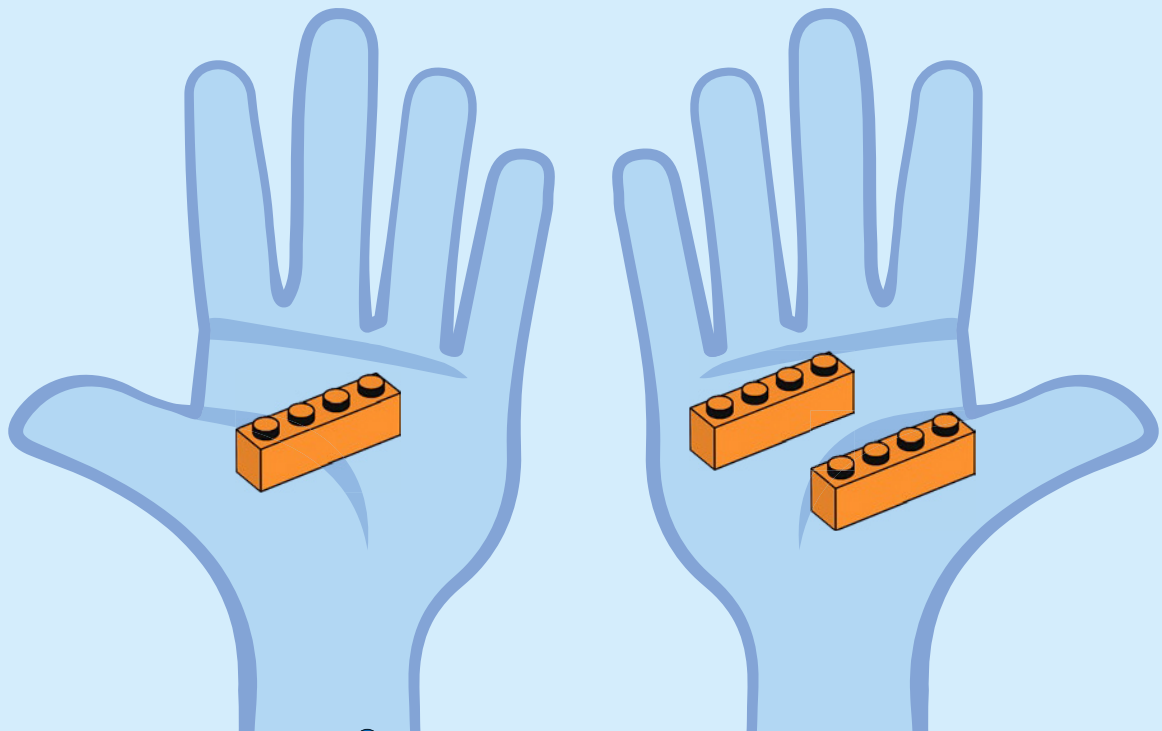


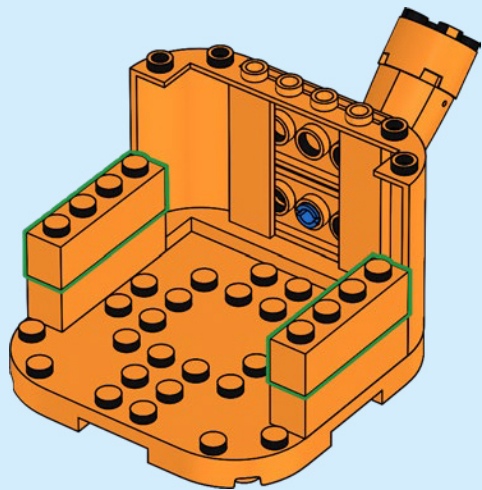
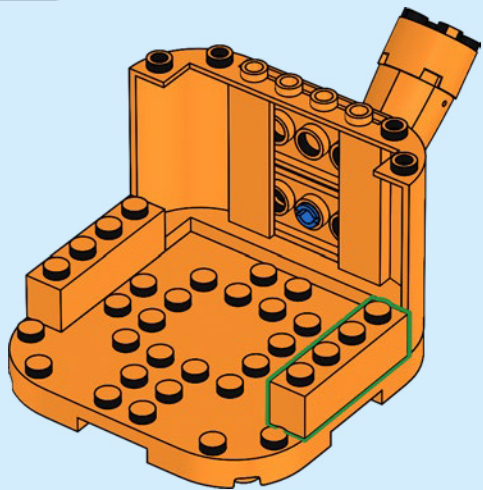


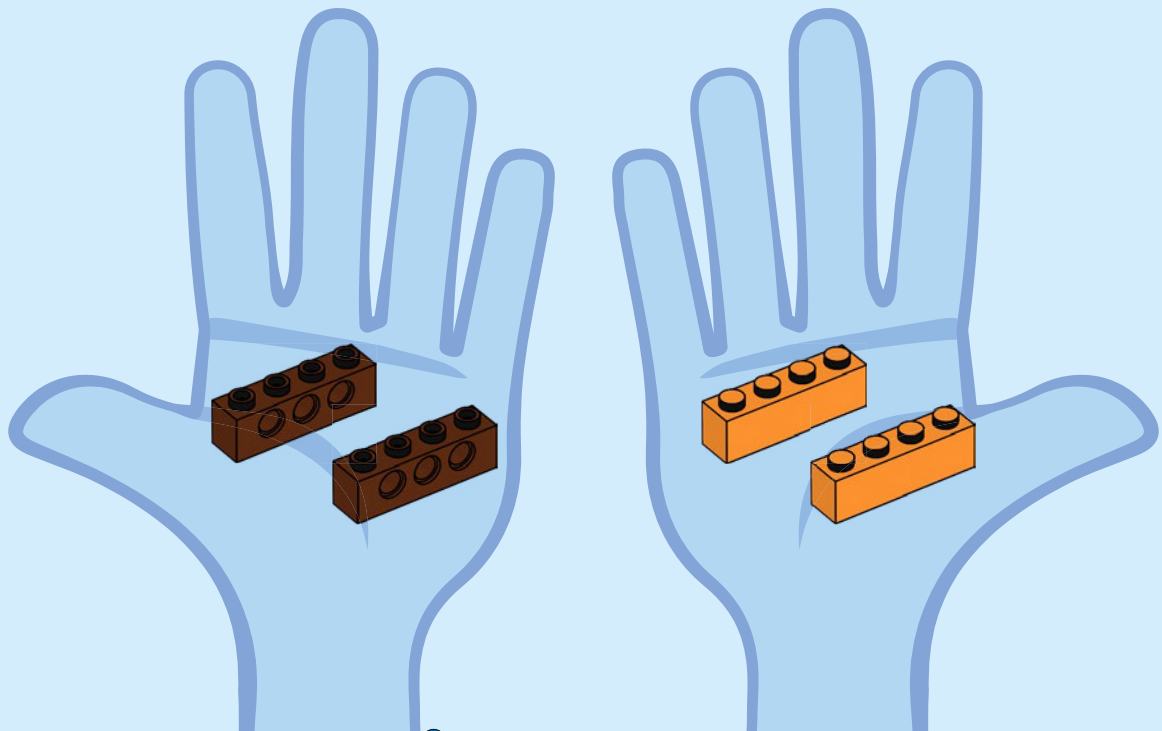


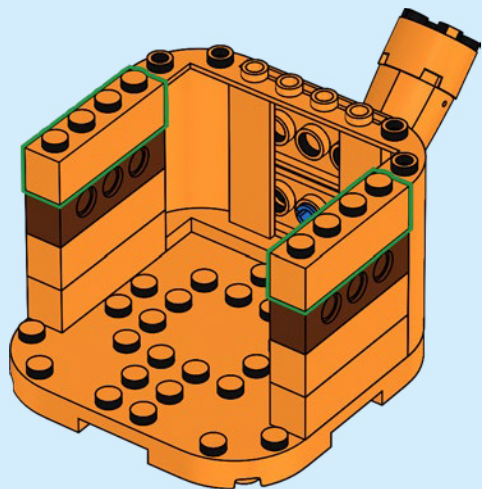
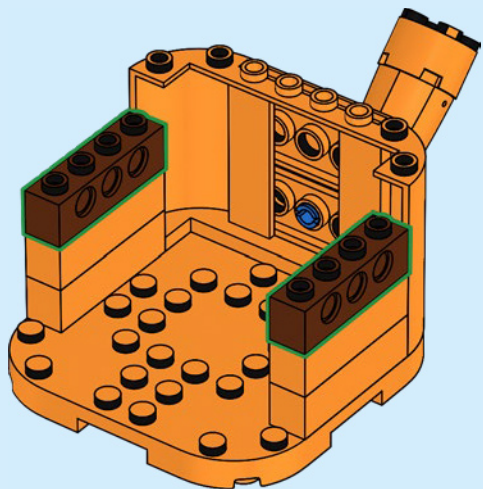




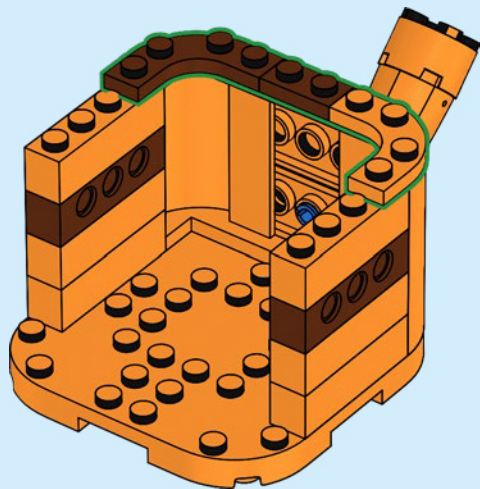


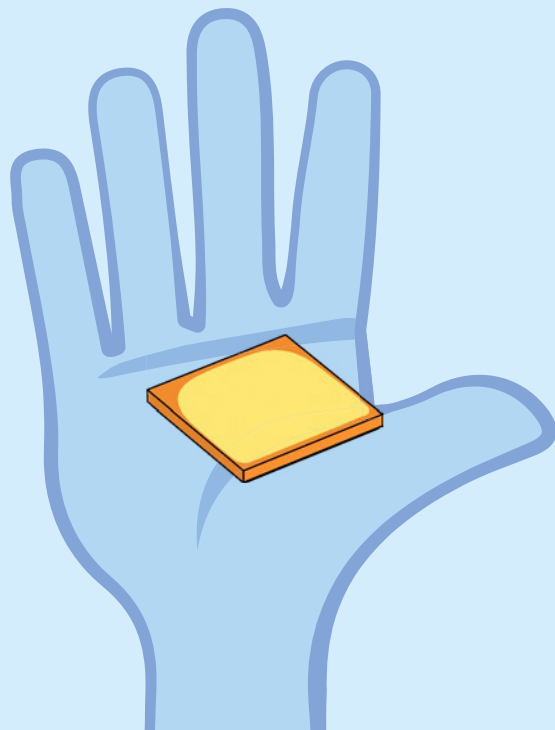
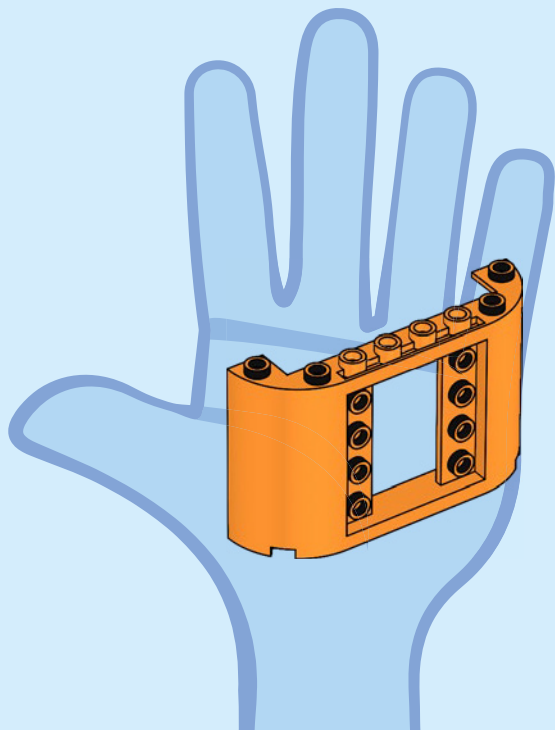


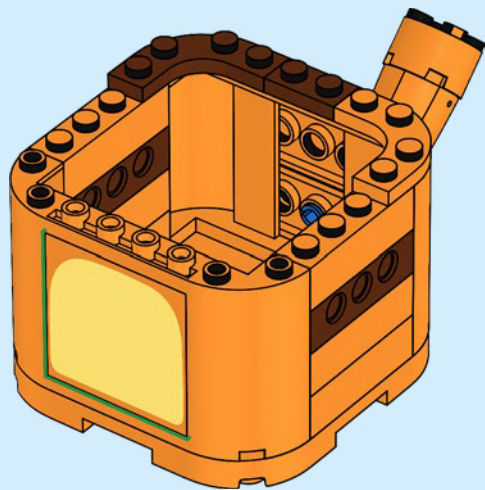
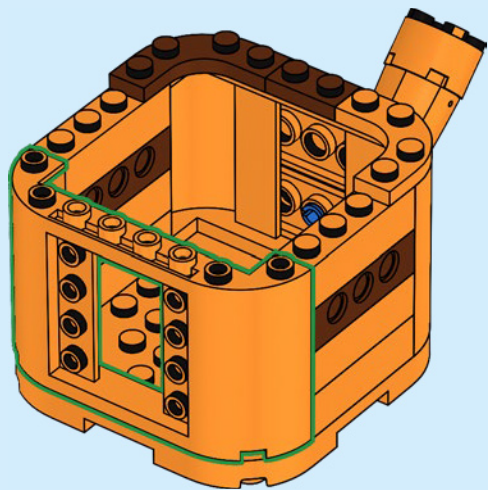




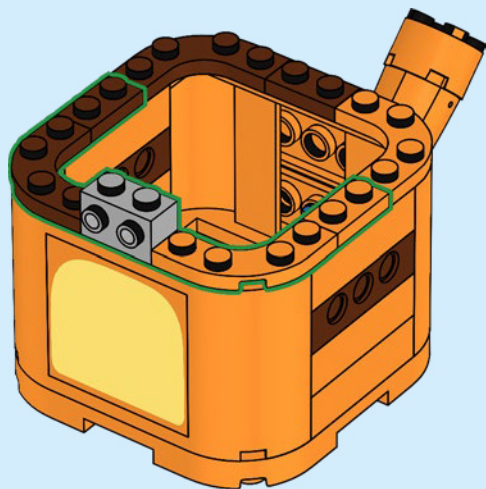


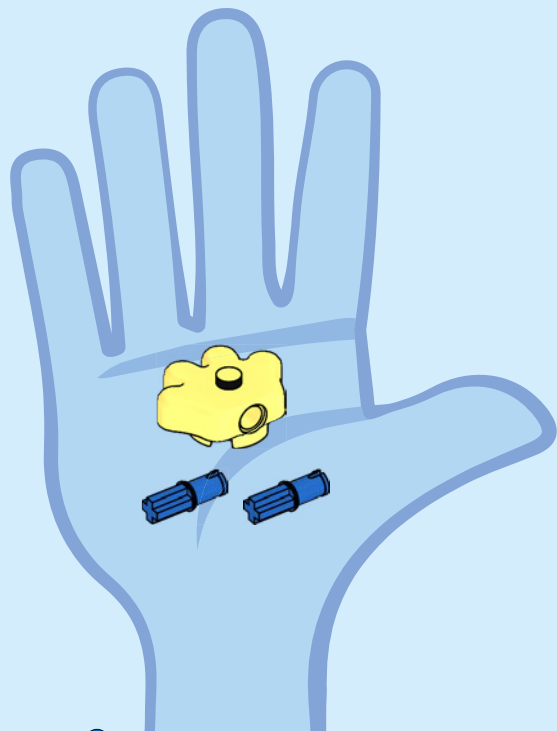


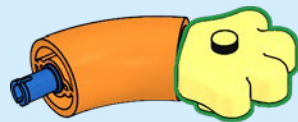
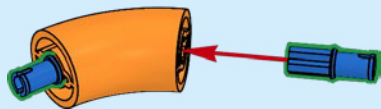
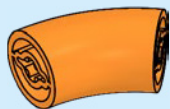


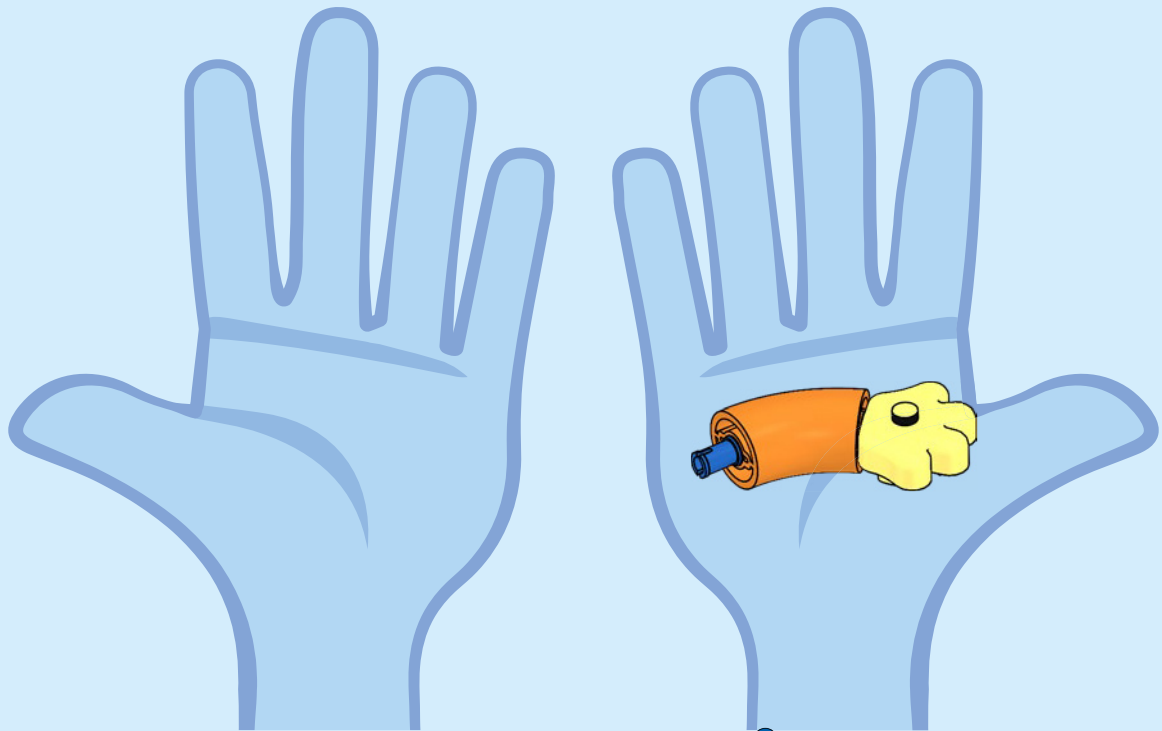


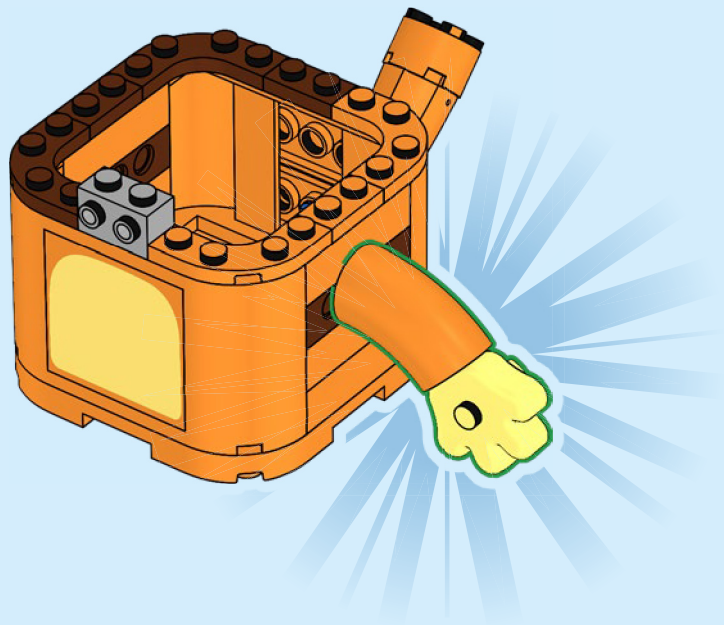


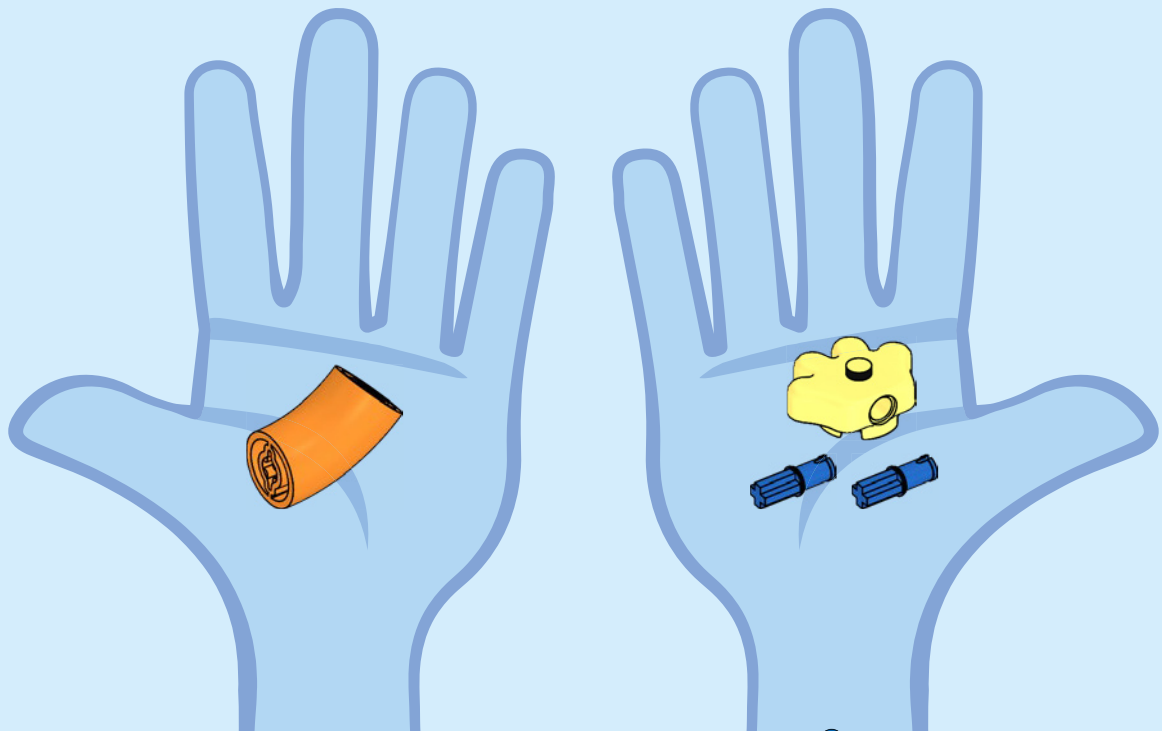


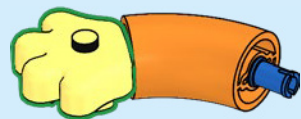
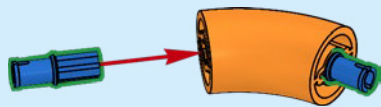


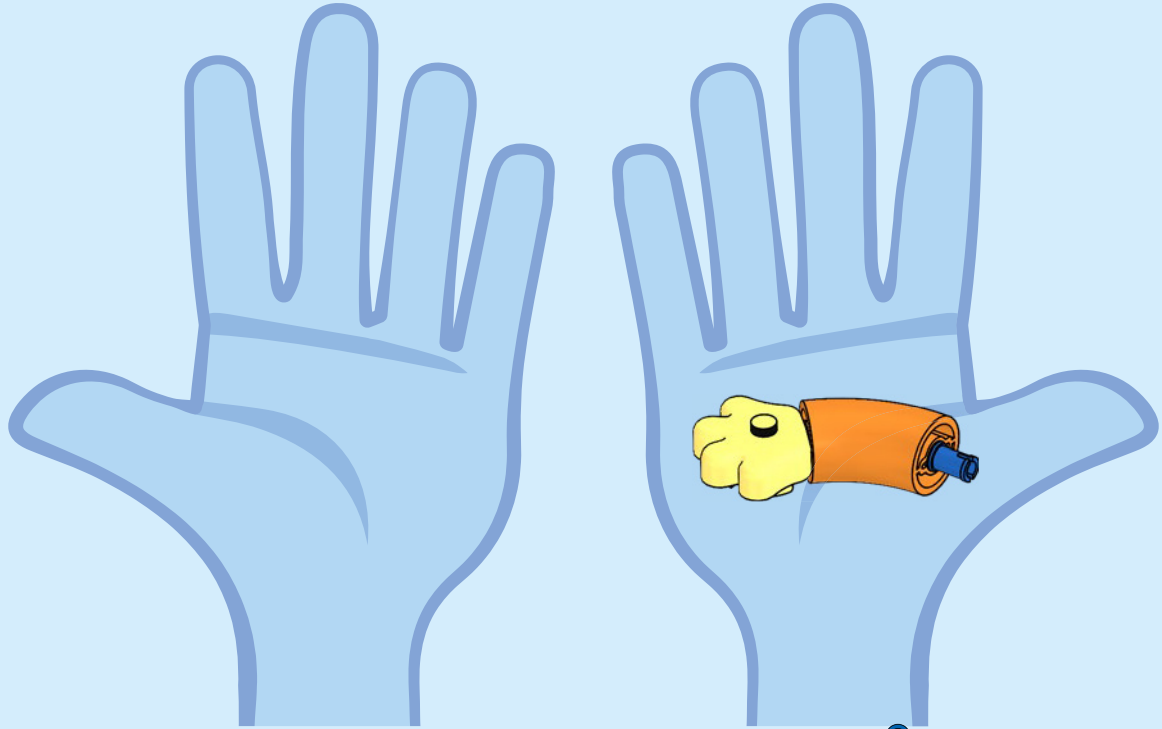


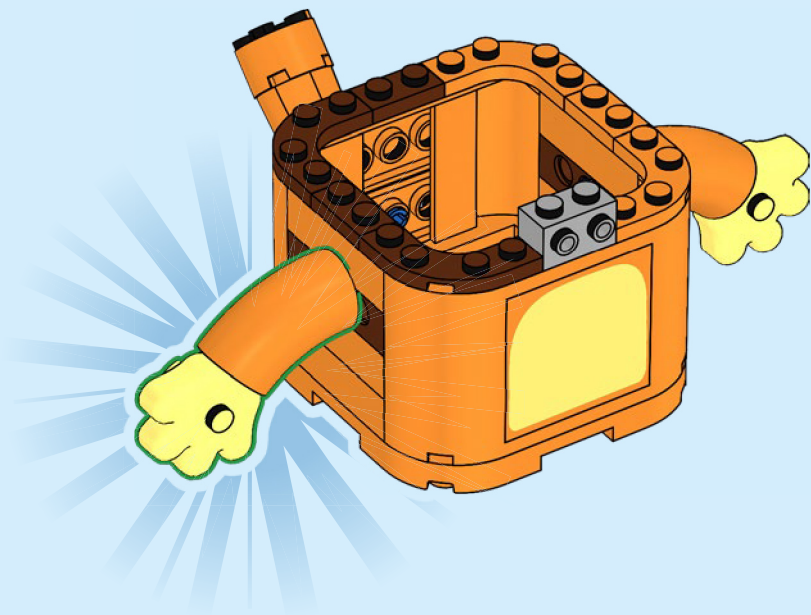


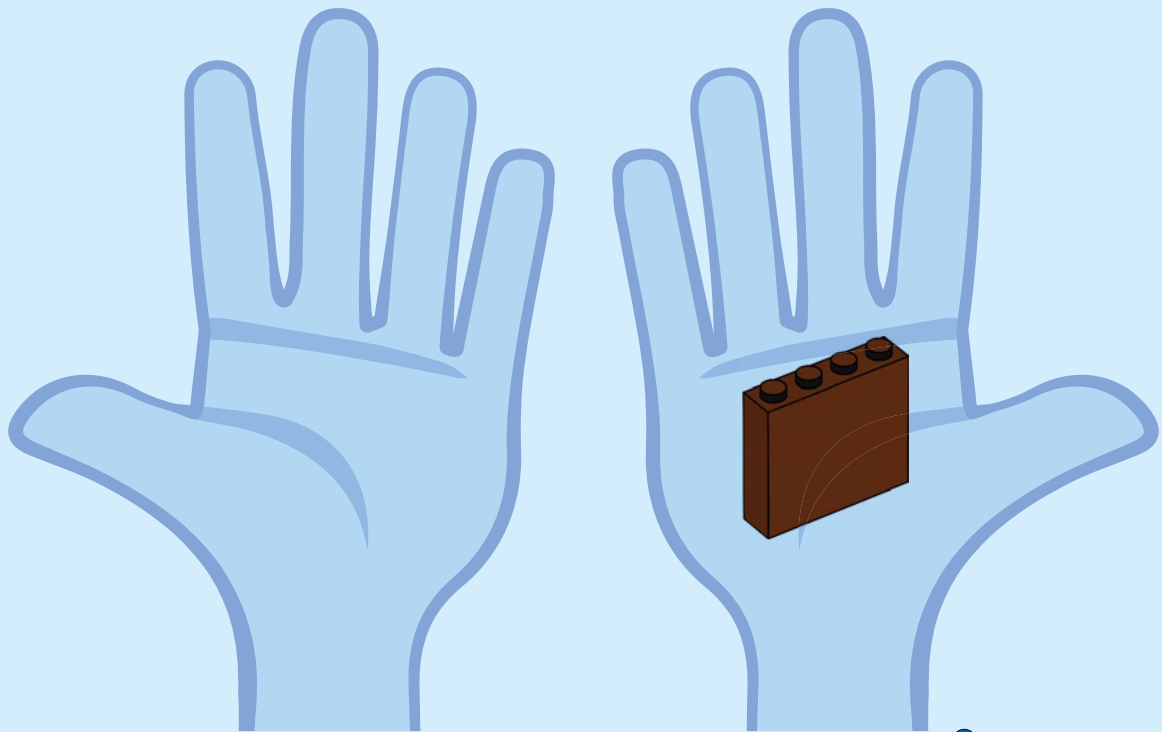


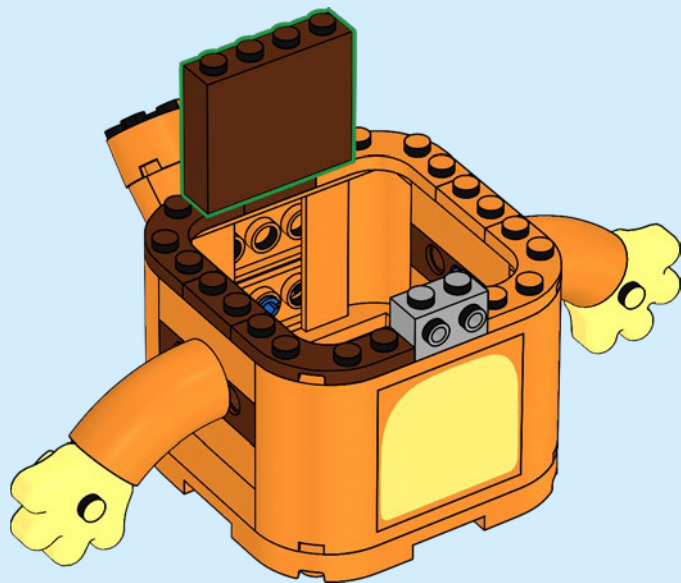


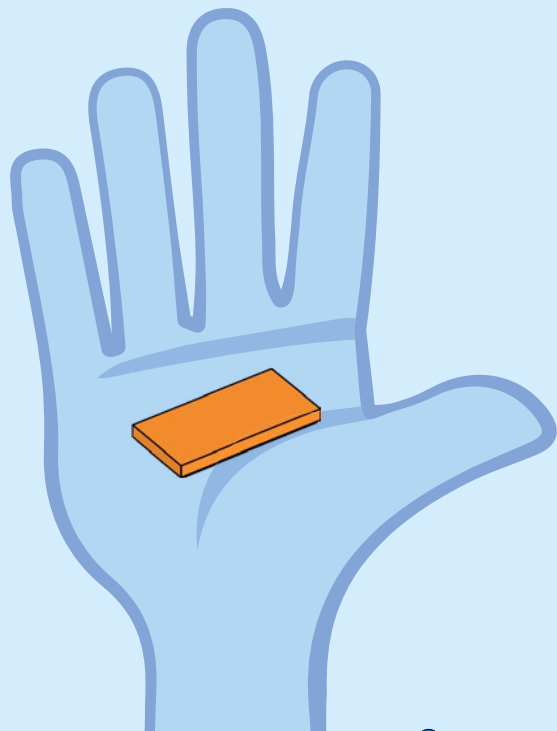
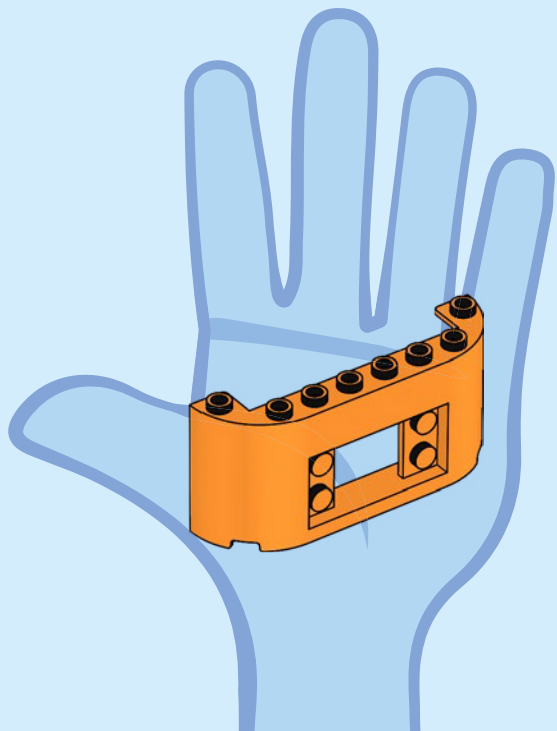


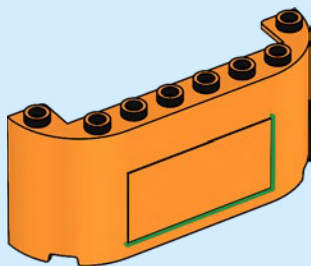
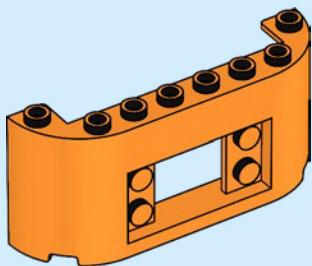


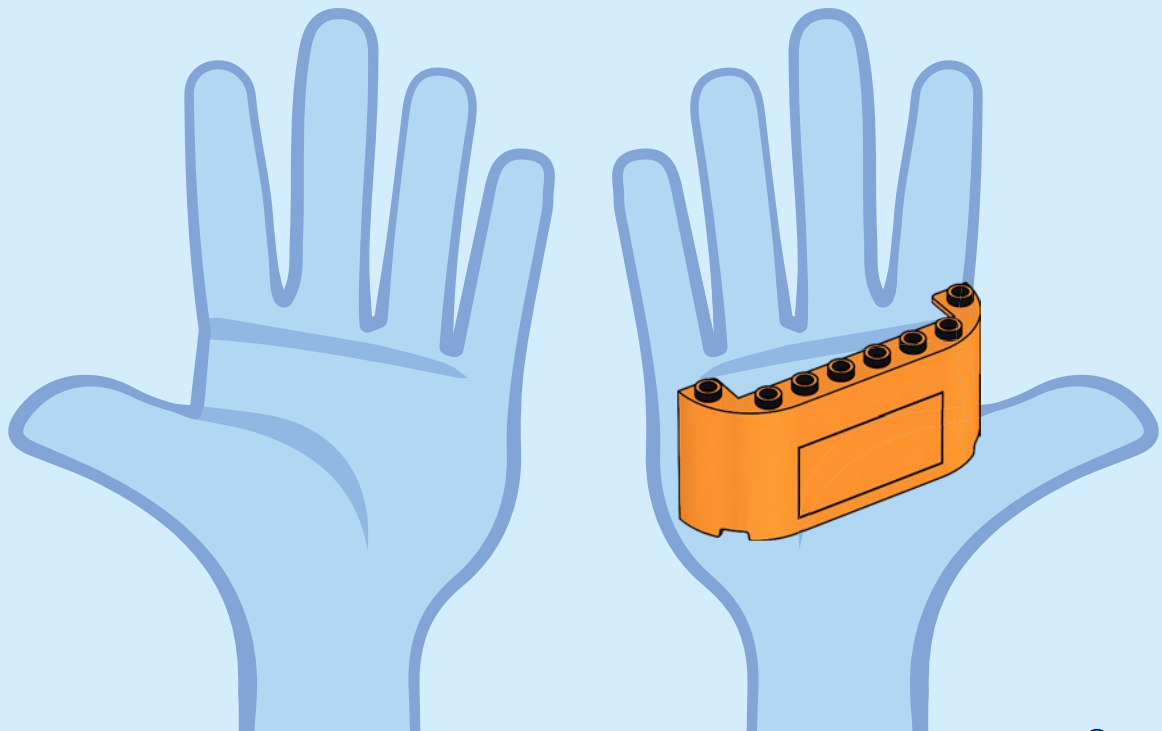


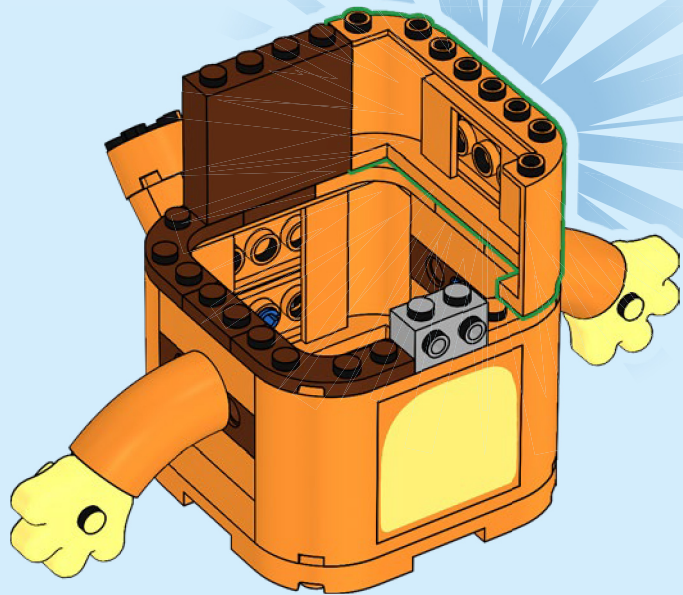


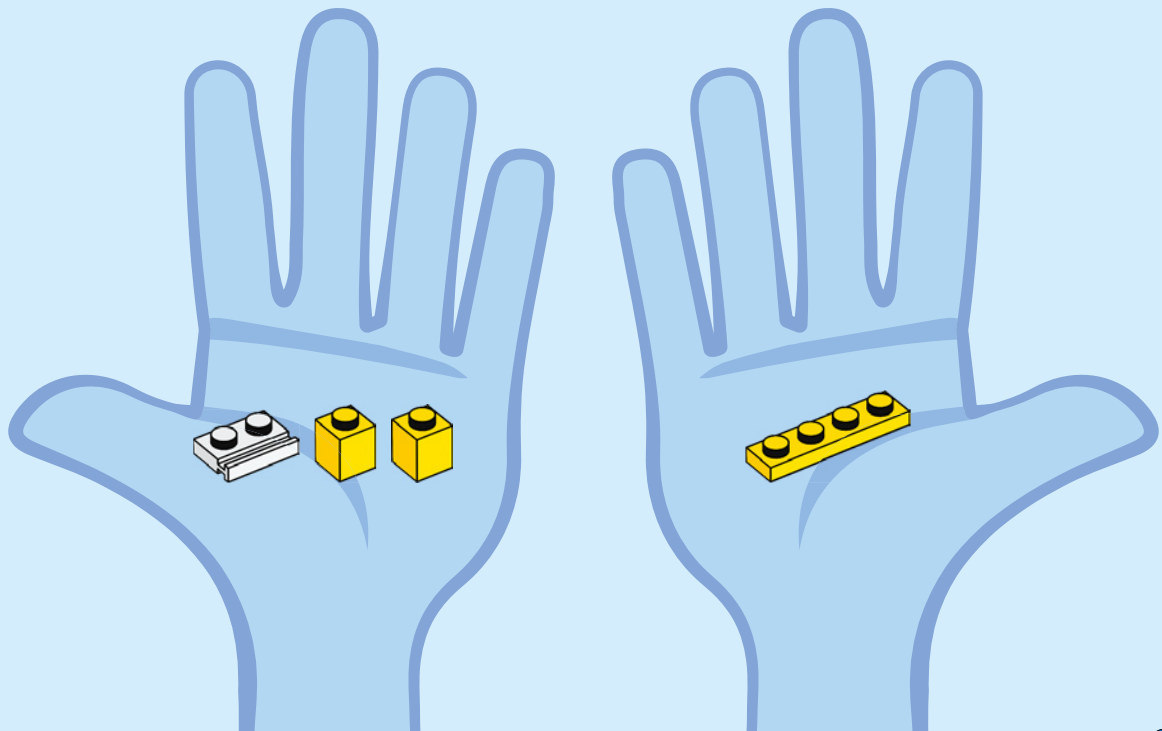


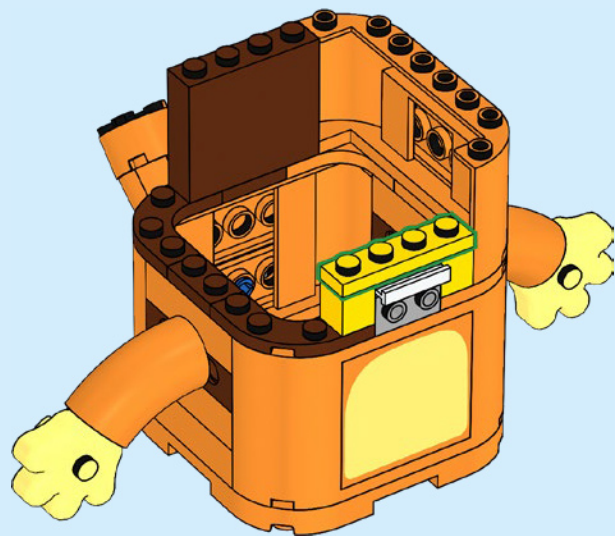
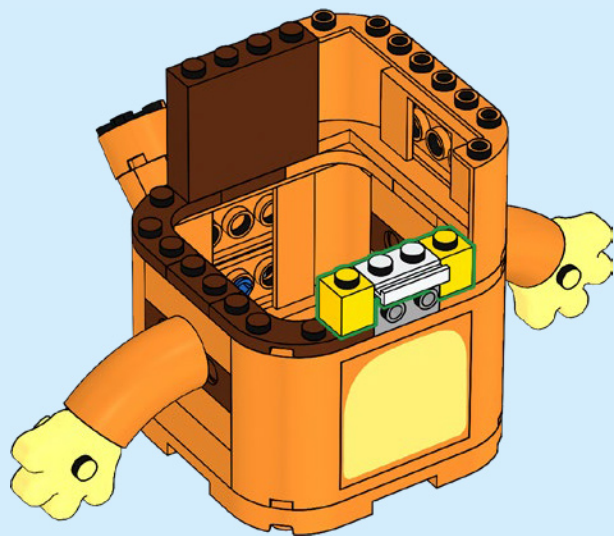


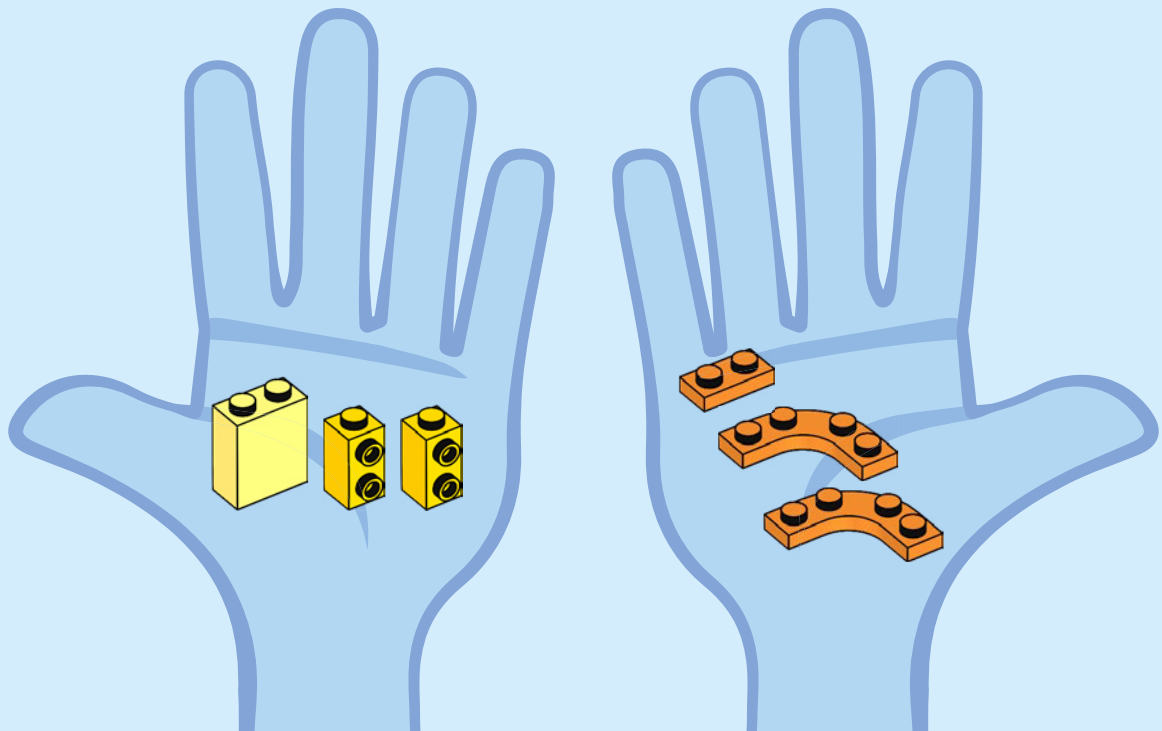


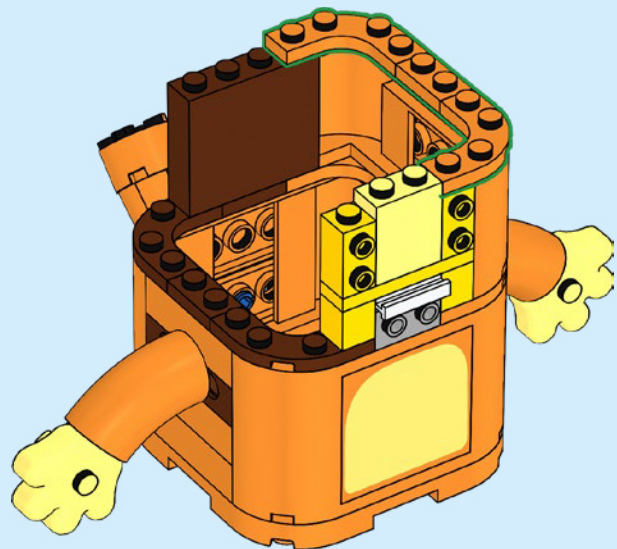
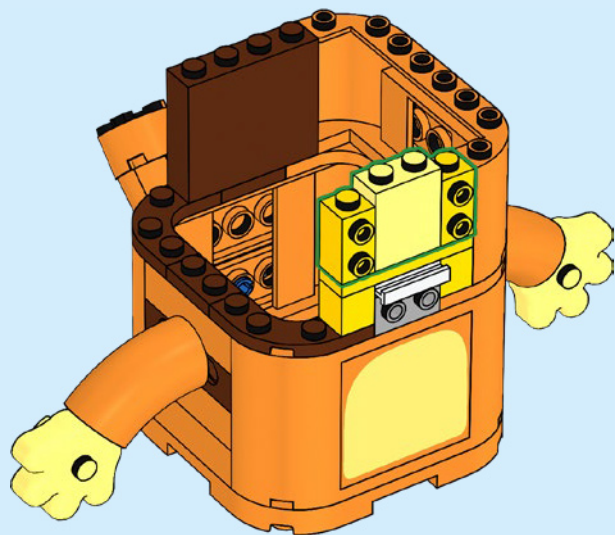


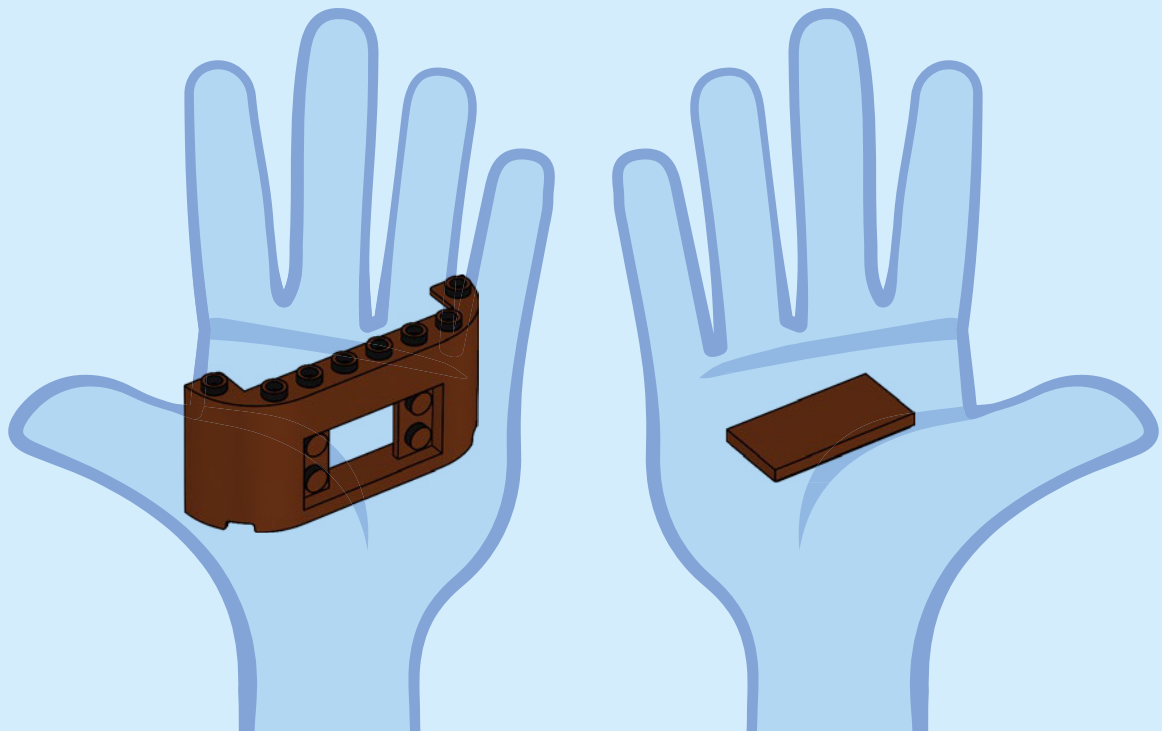


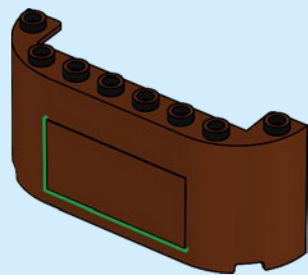
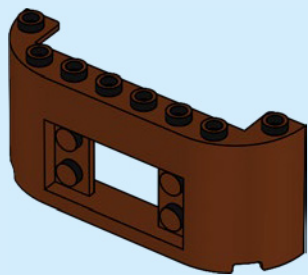


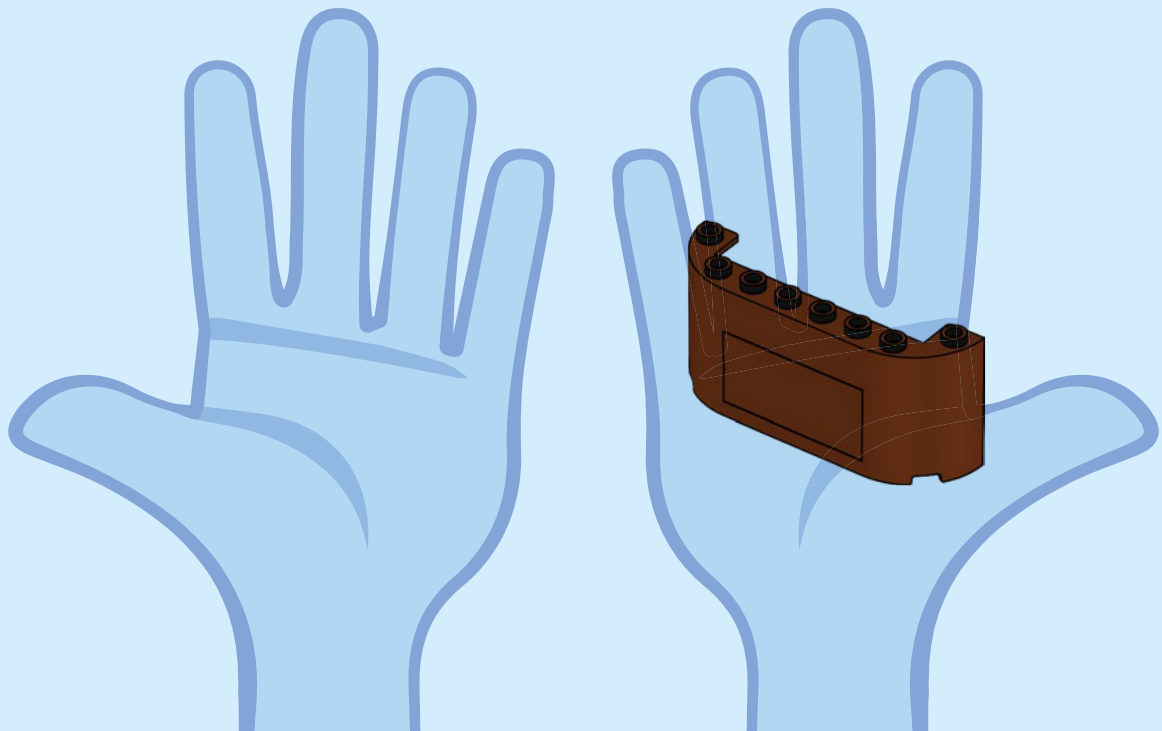


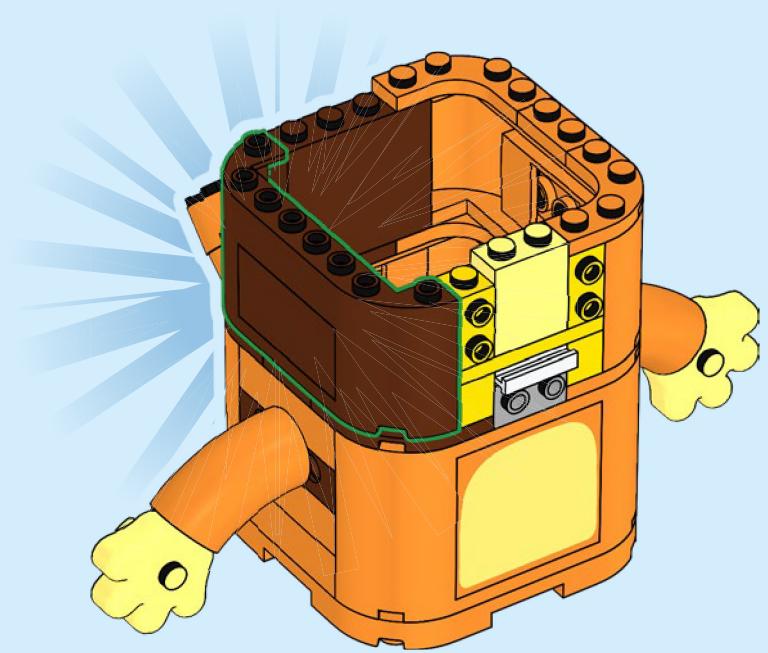


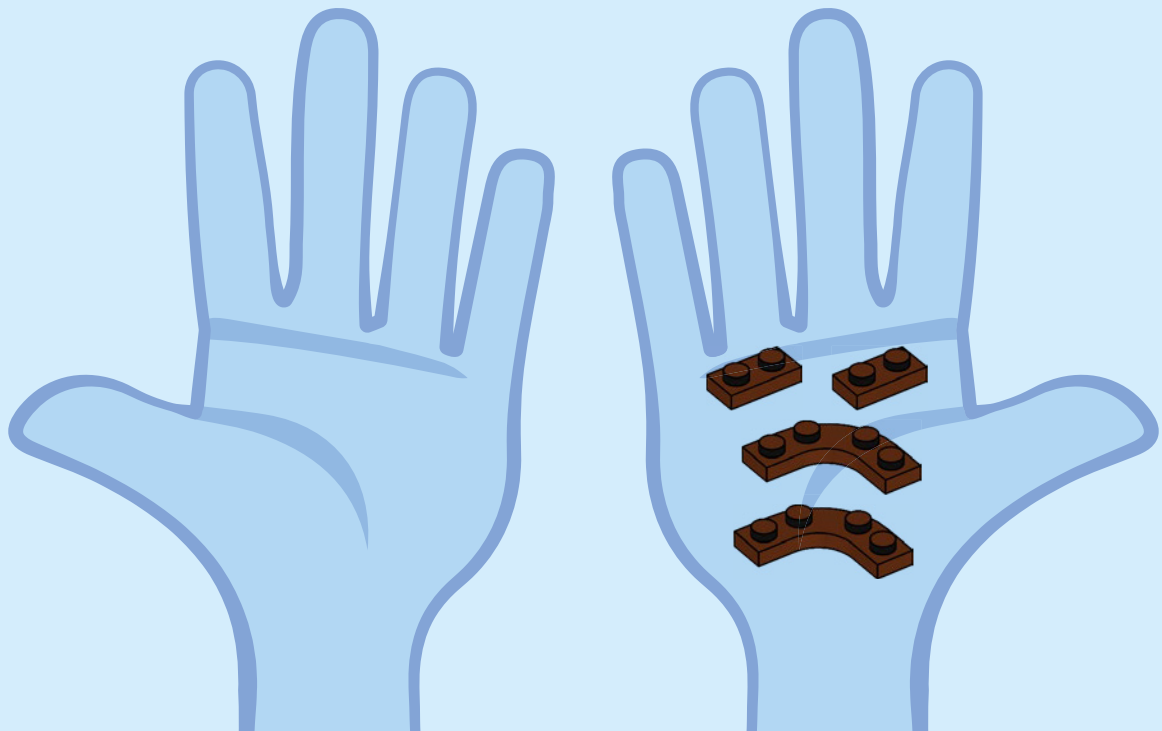


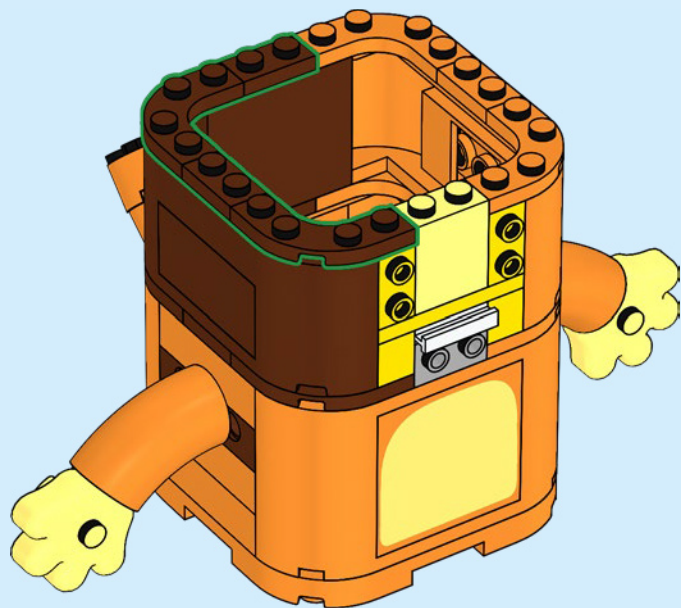


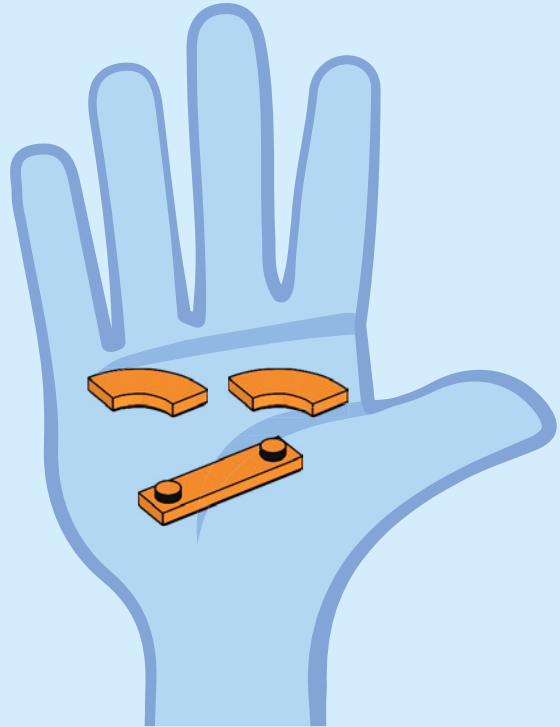


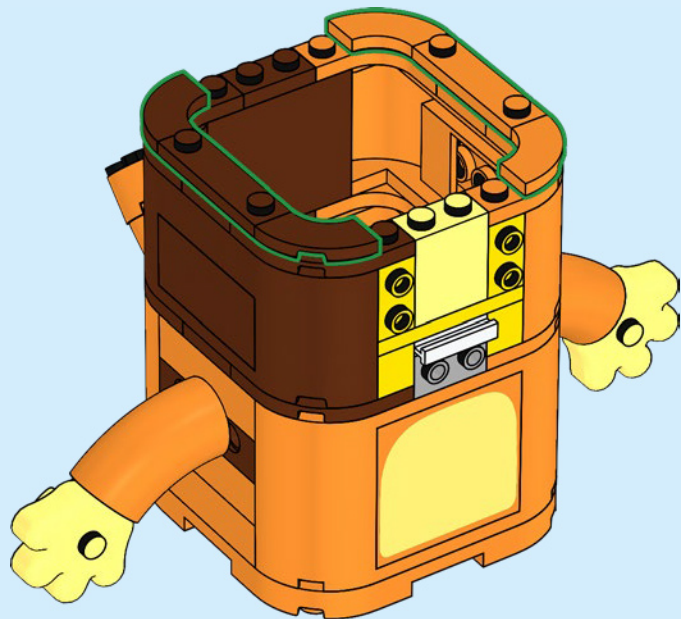


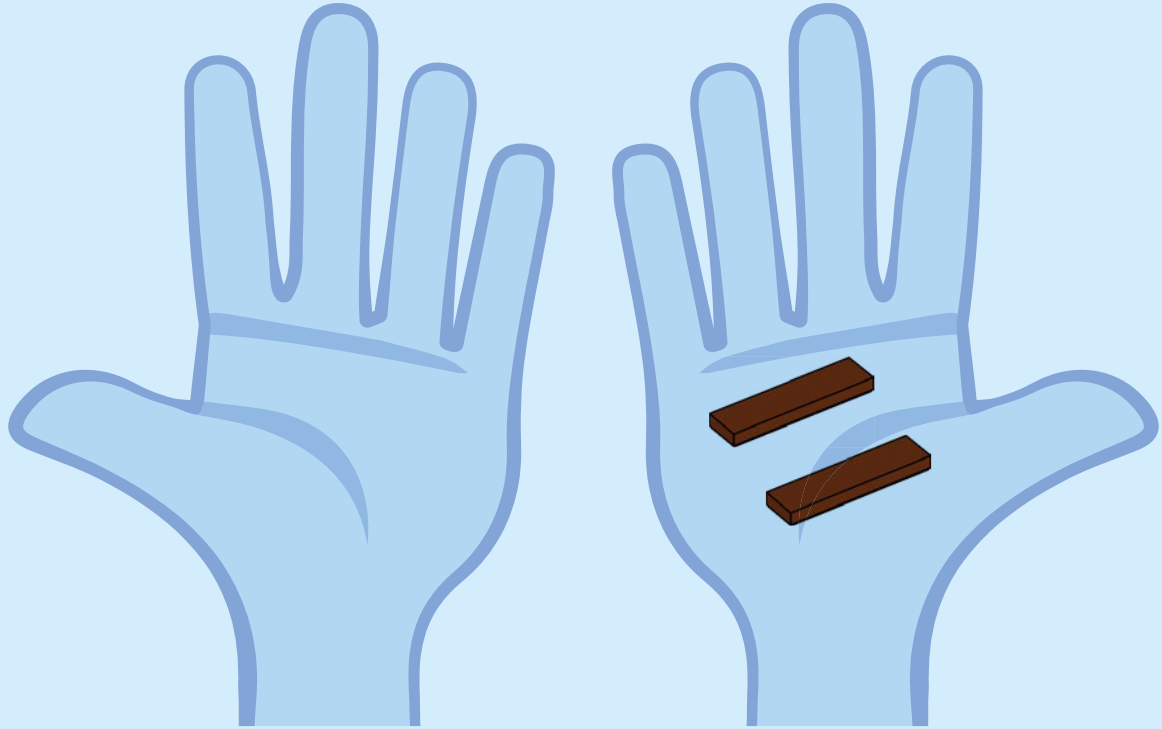


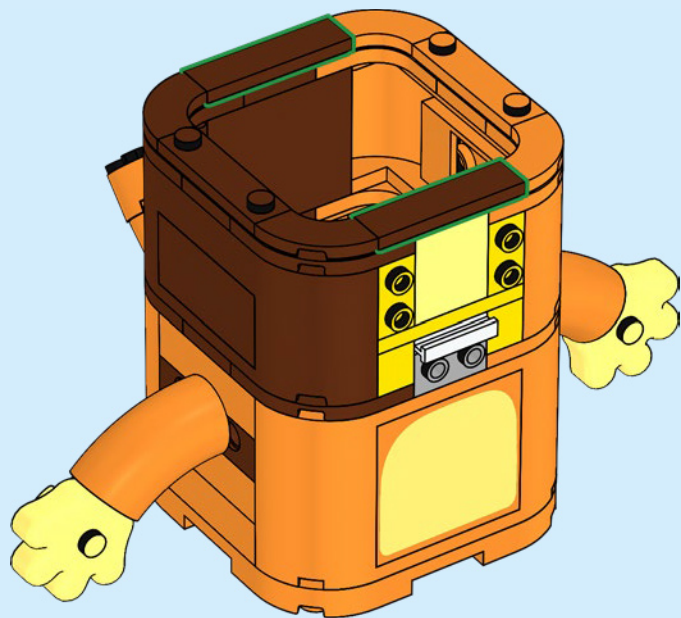


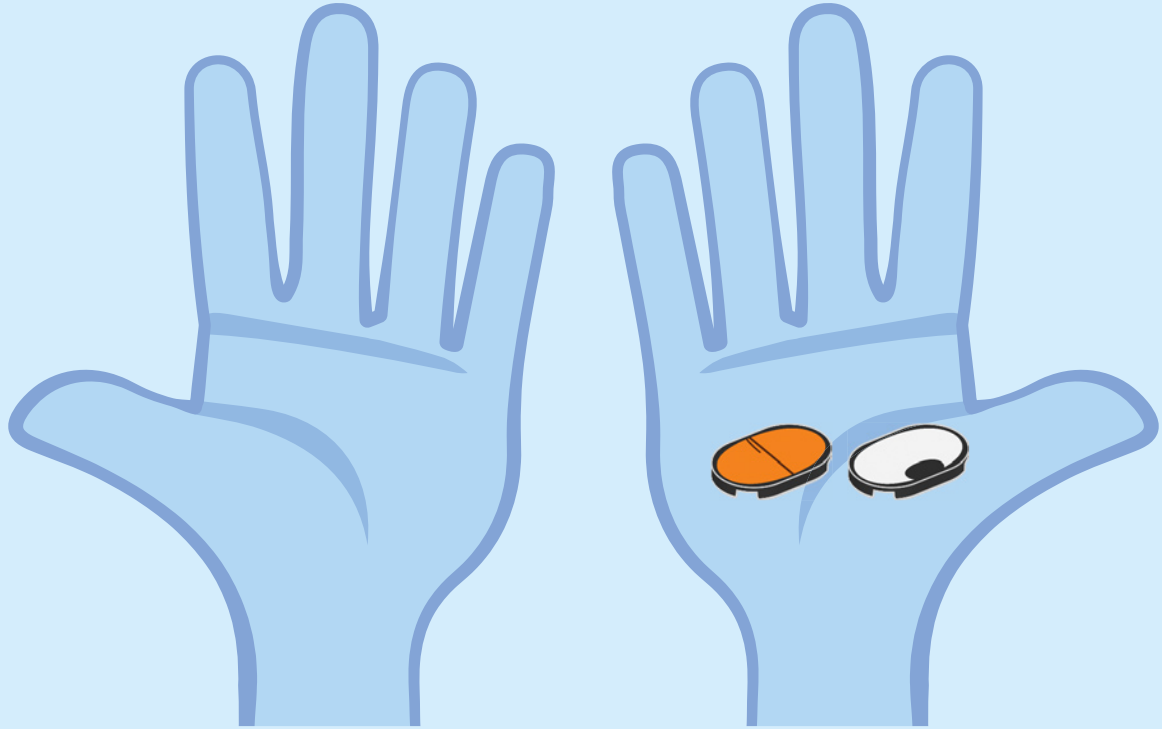


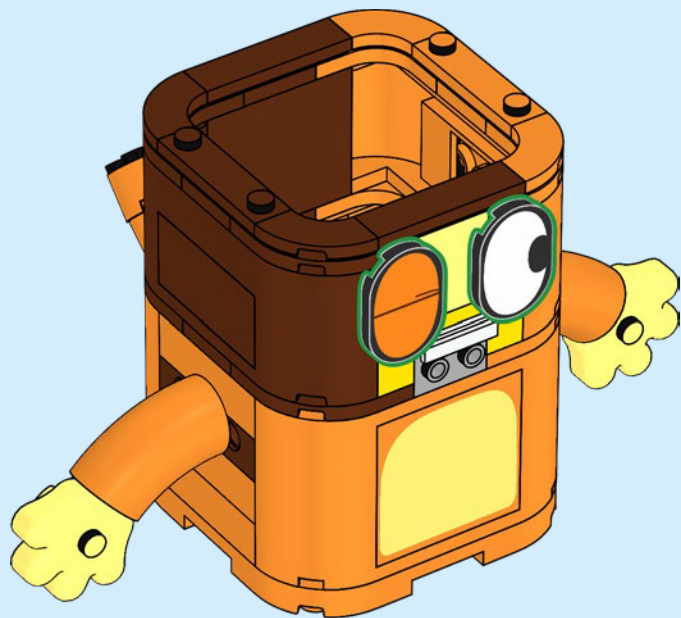


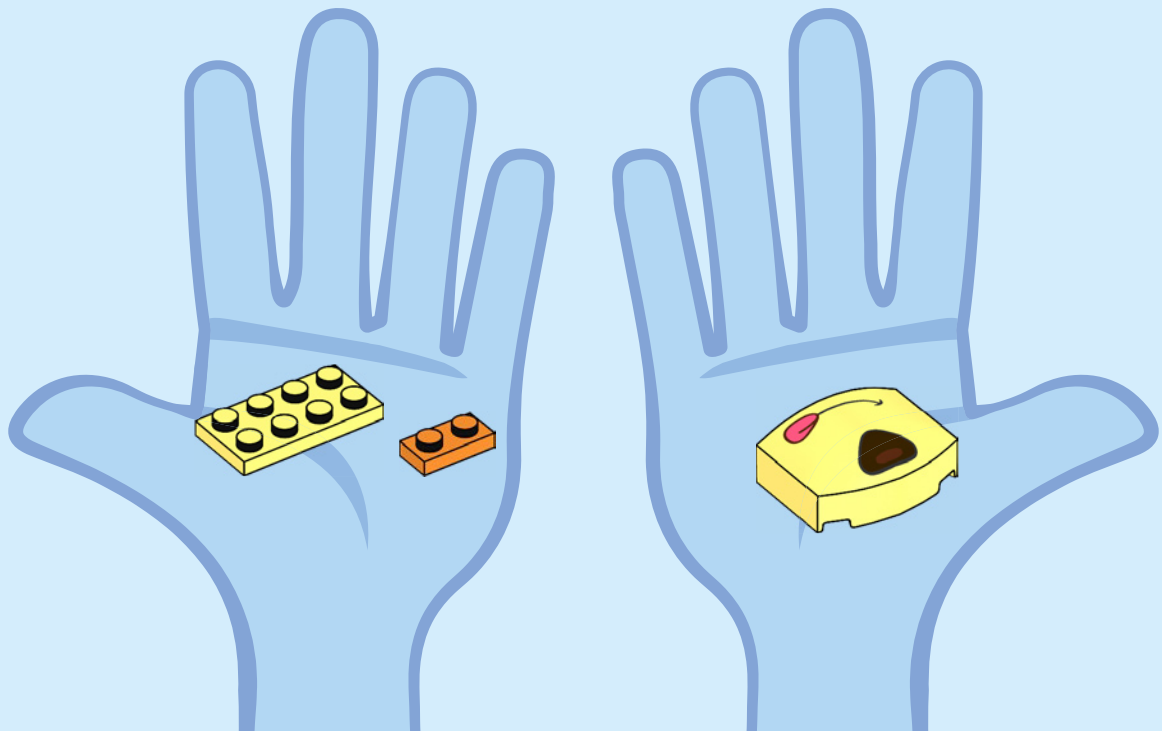


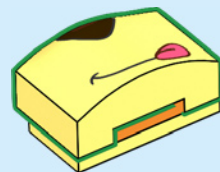
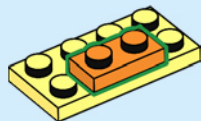
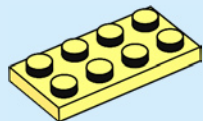


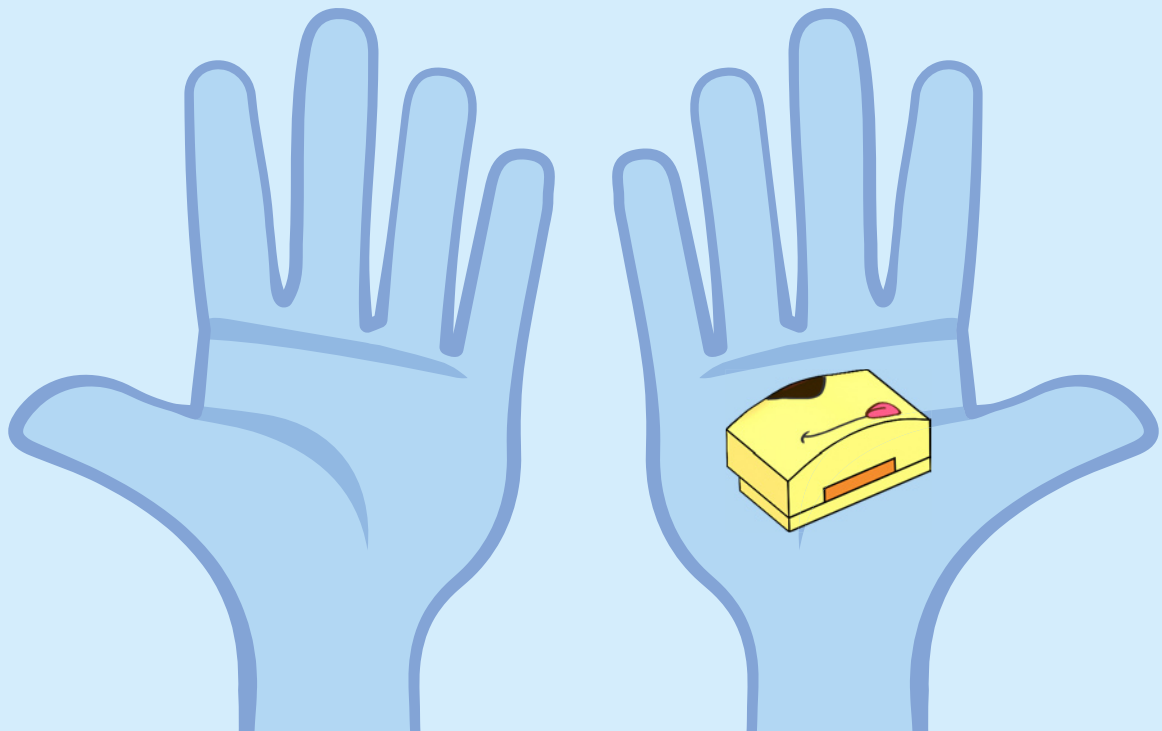


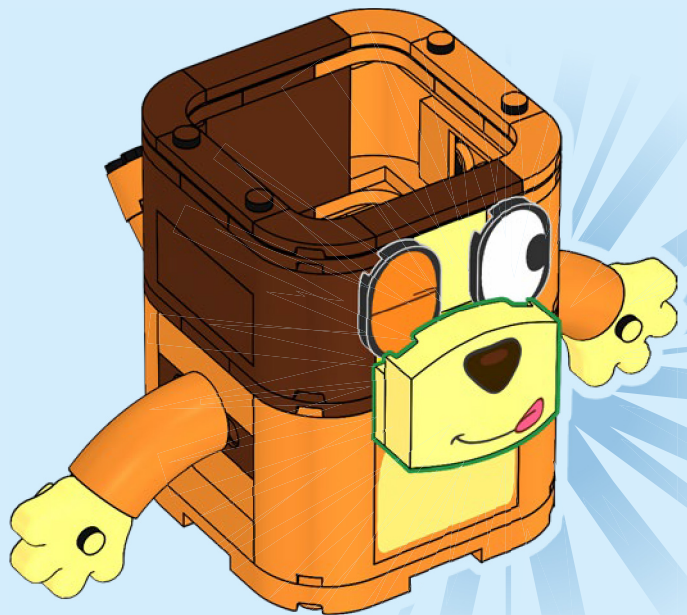


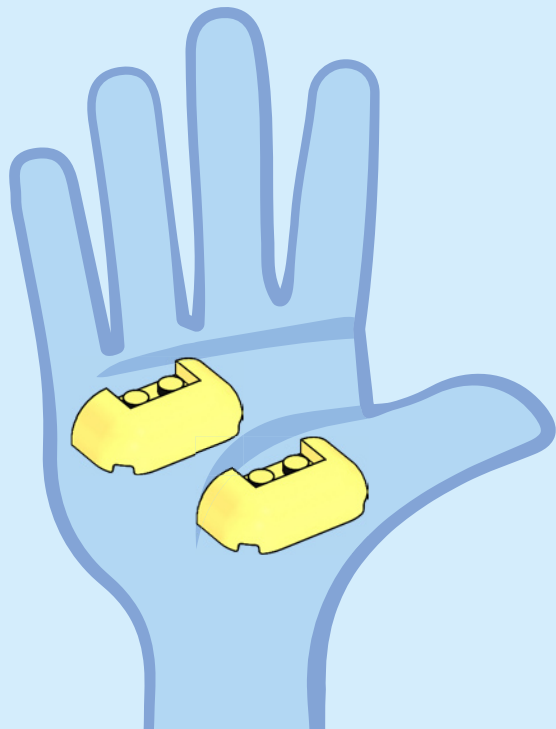
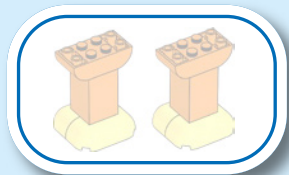




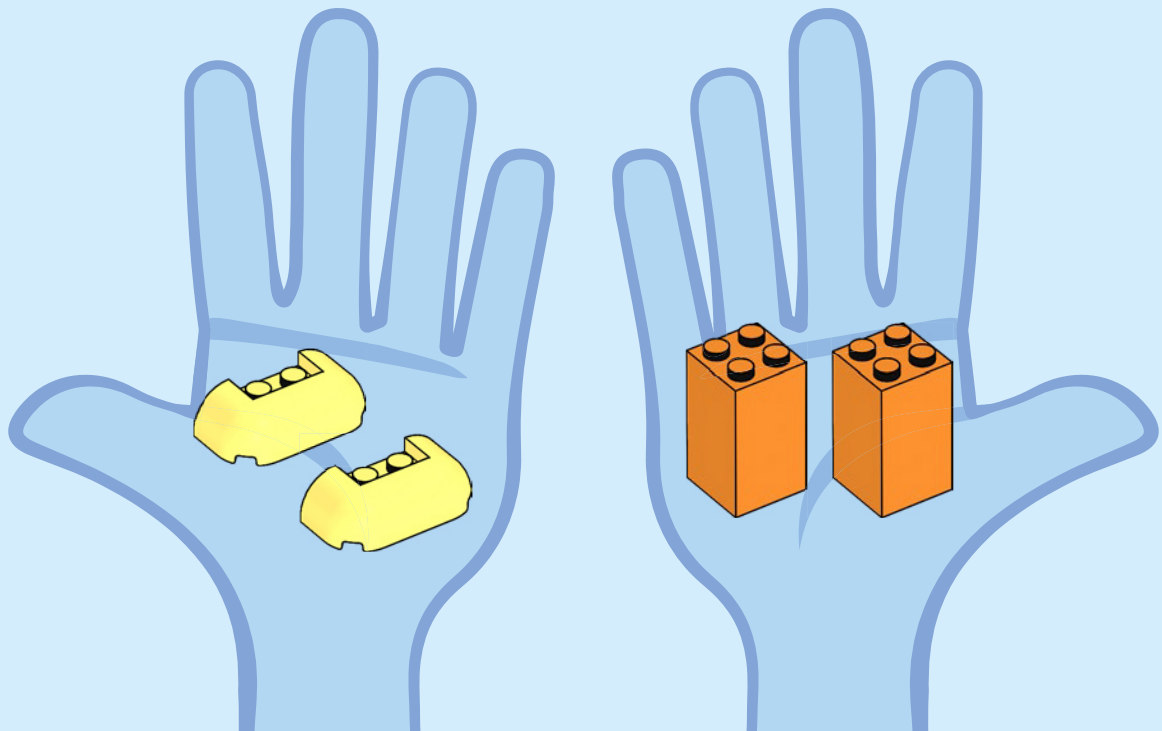


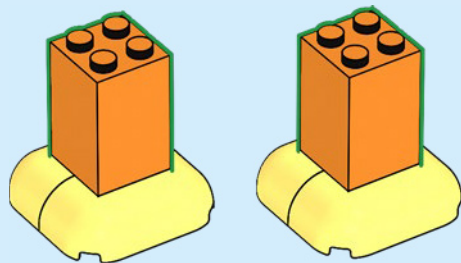
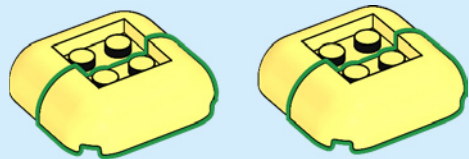


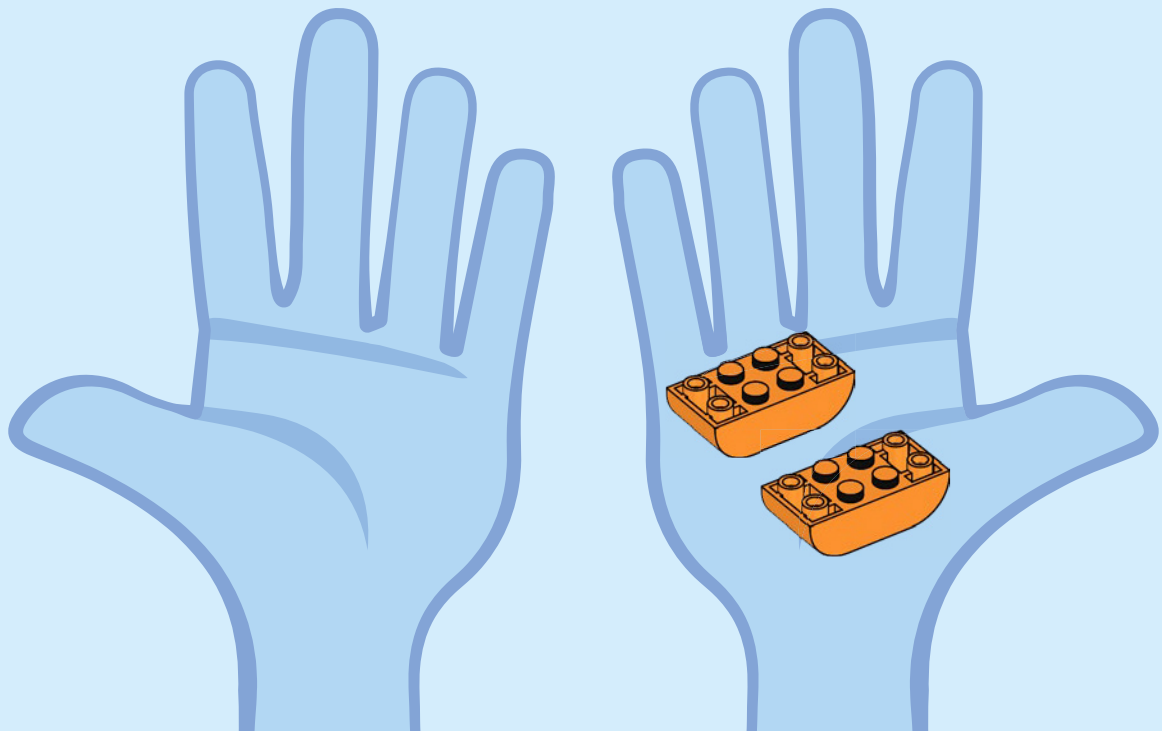


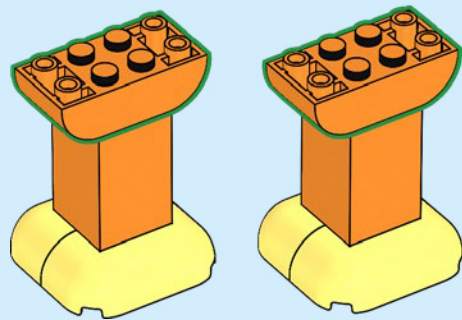


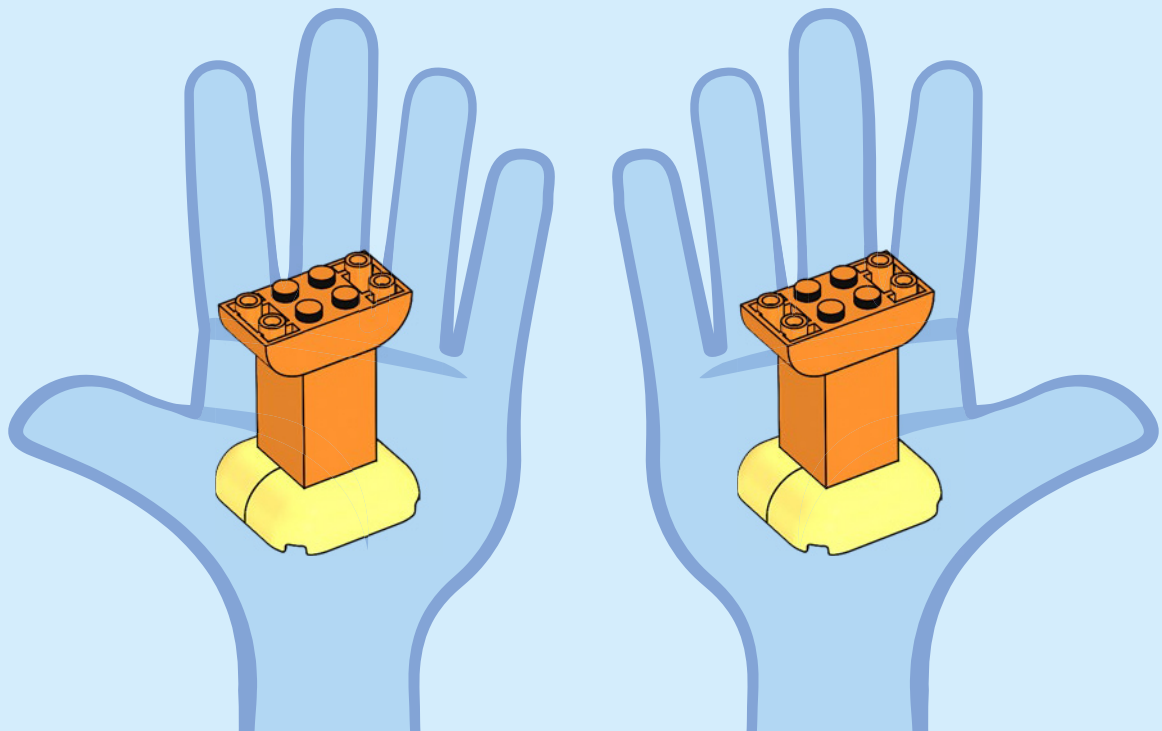


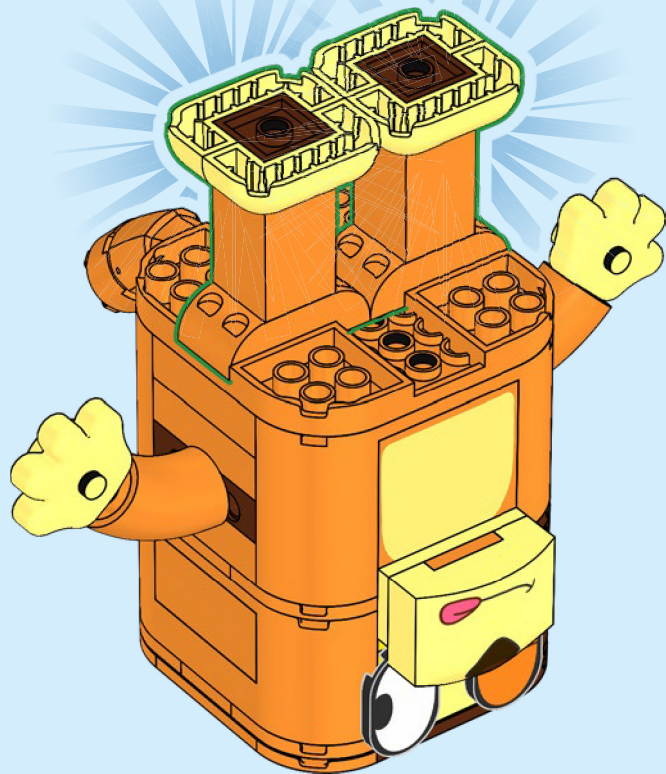


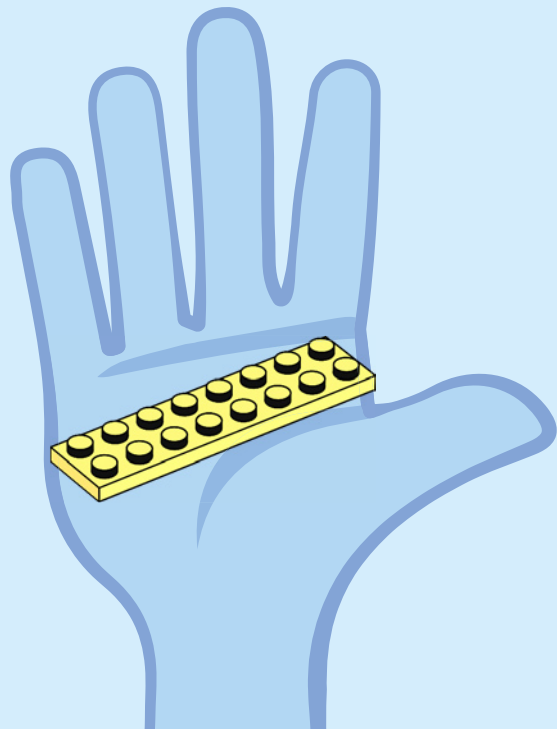
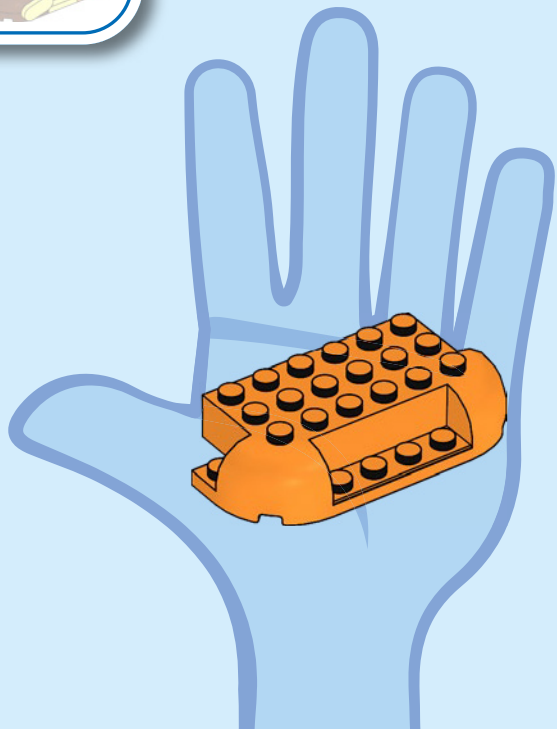


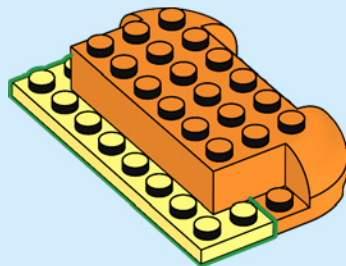
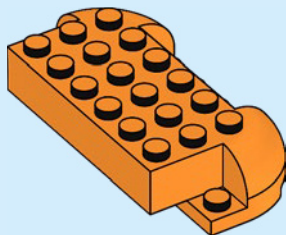


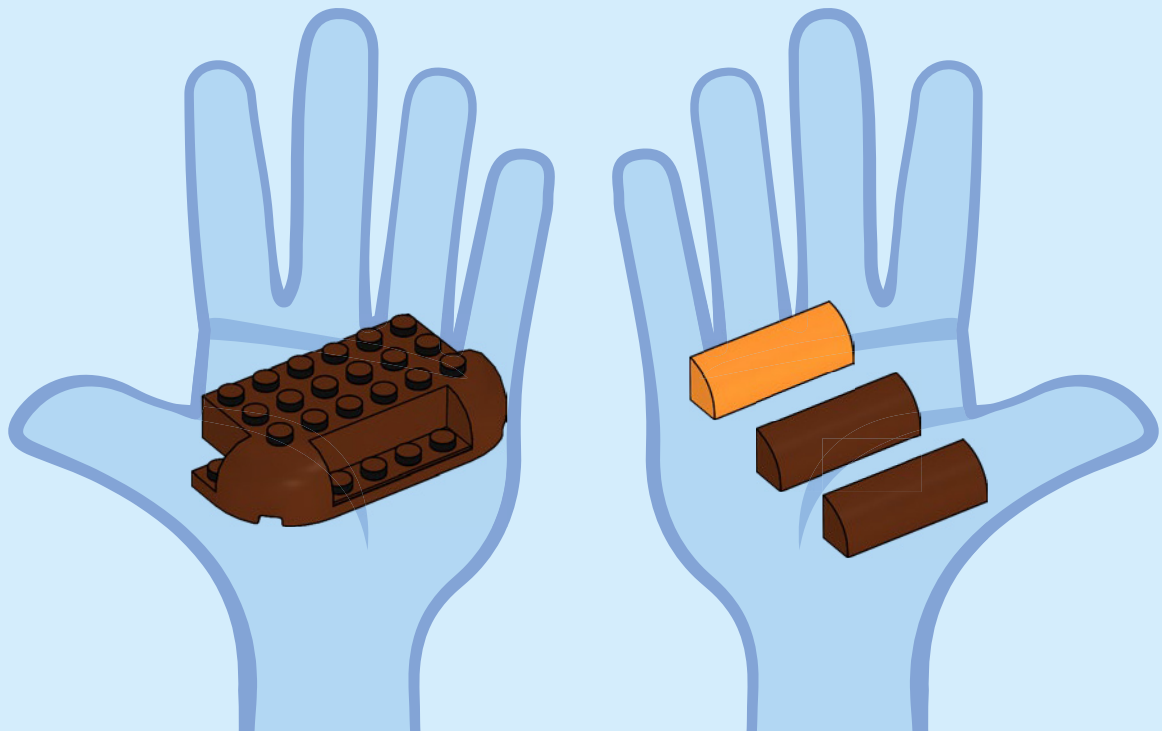


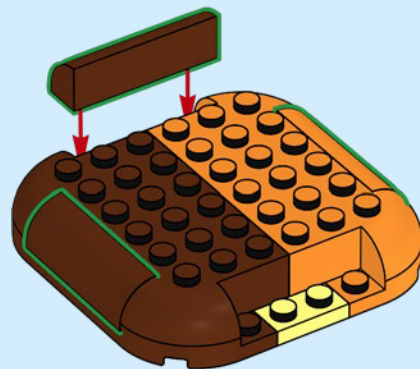
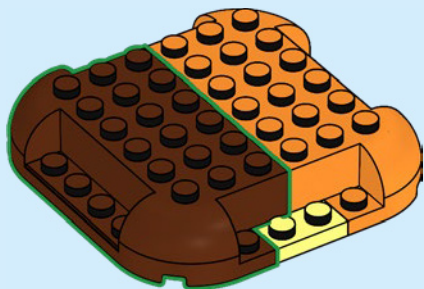


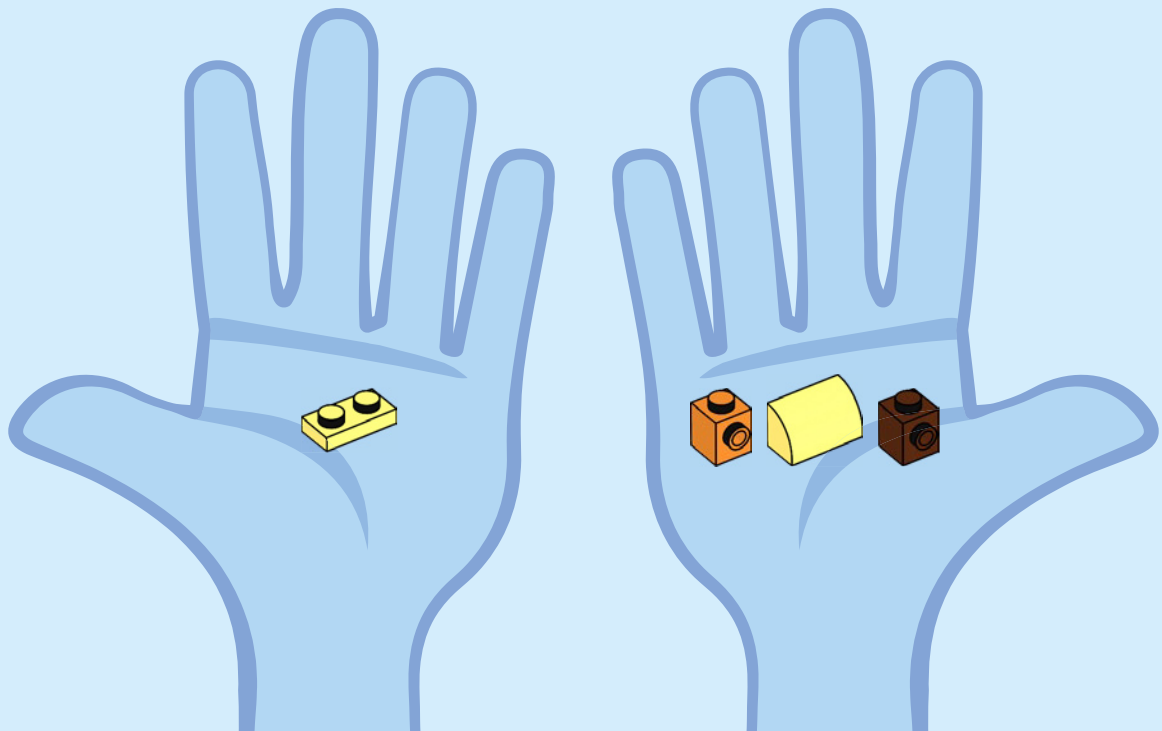


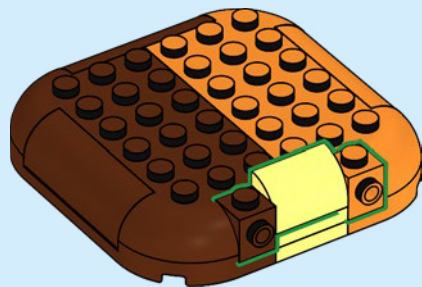
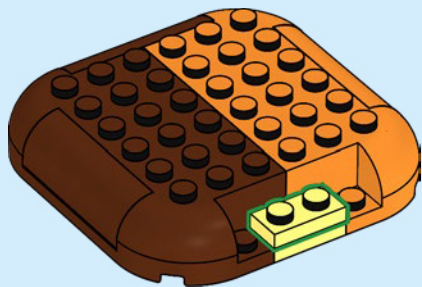


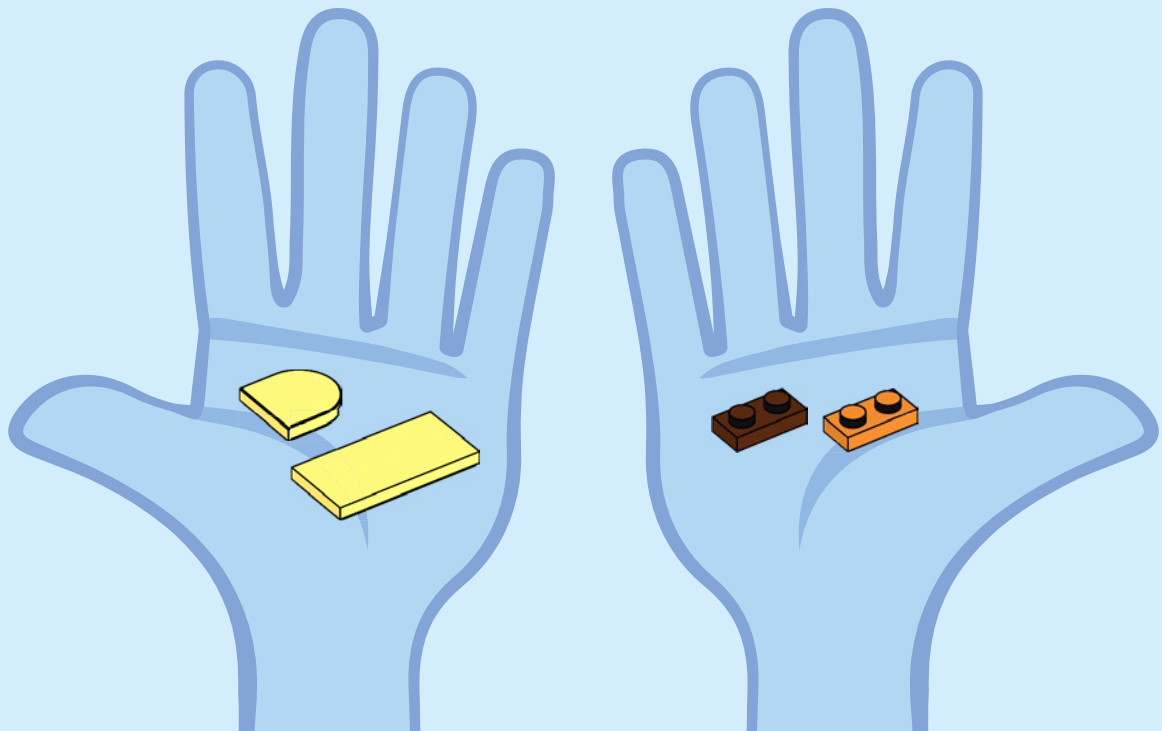


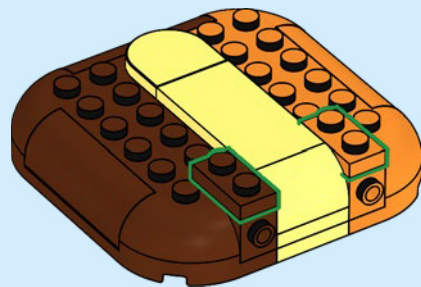
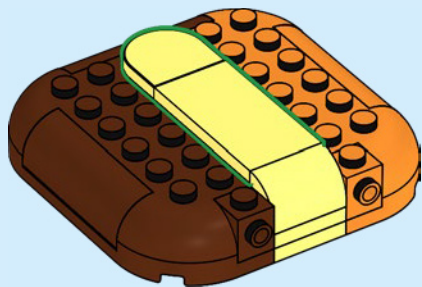


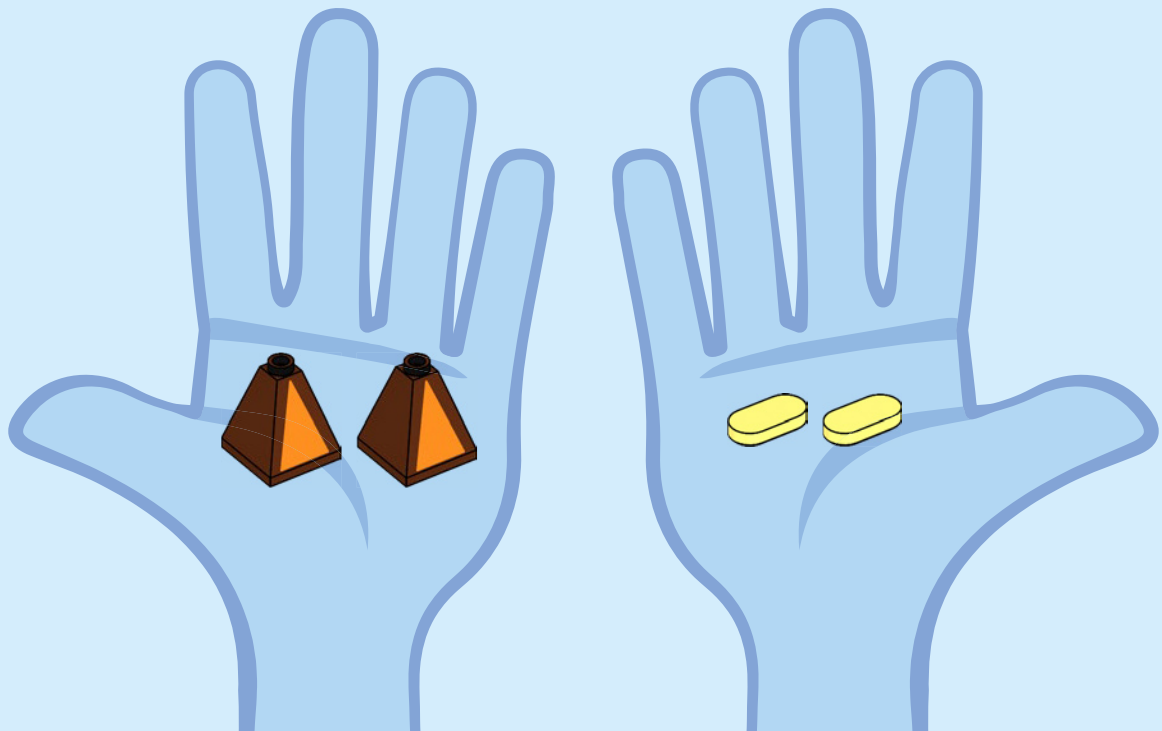


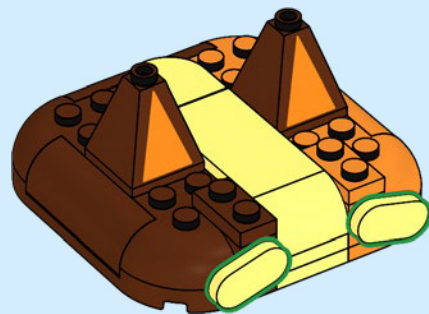
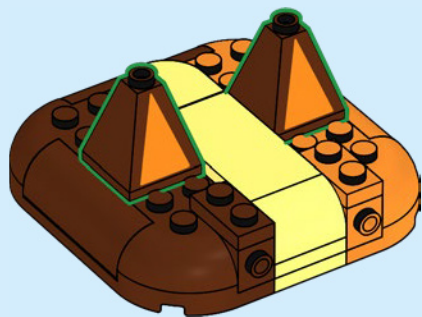


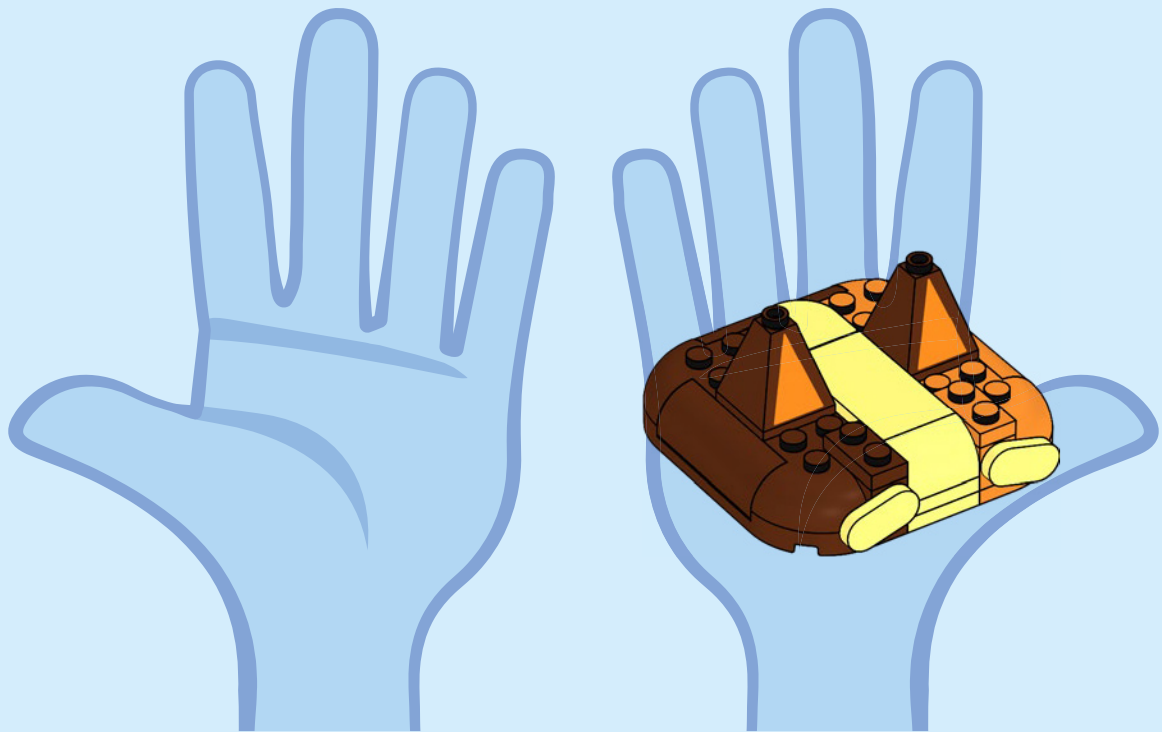








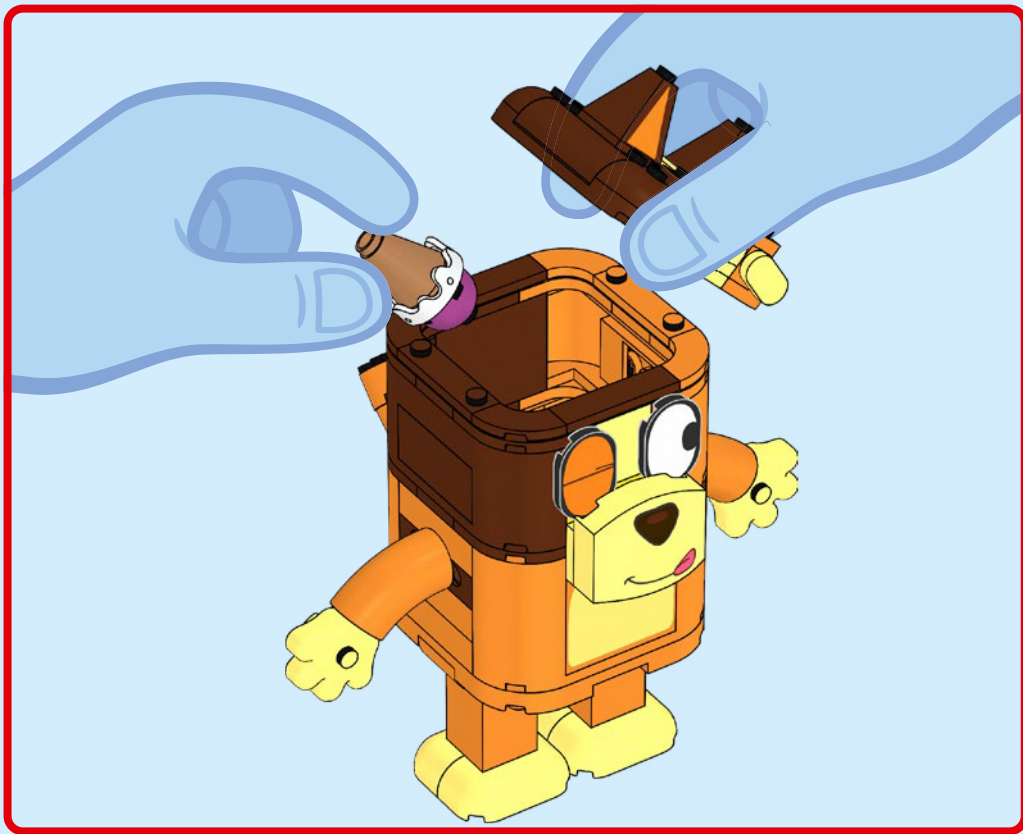


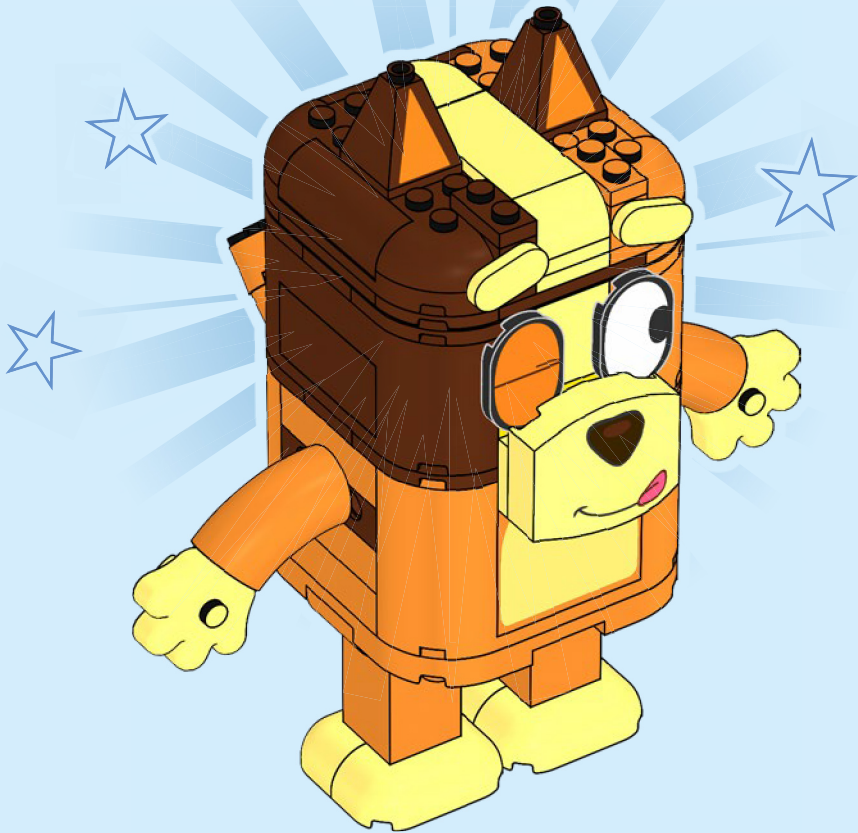


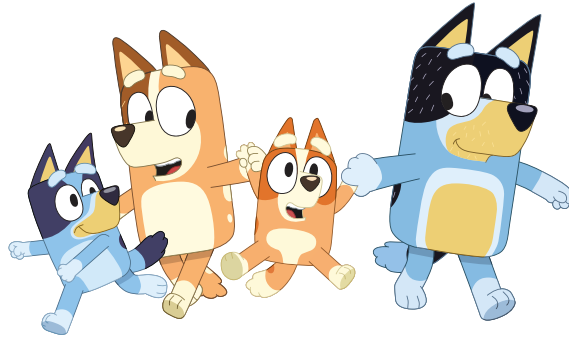












LEGO and the LEGO logo are trademarks of the LEGO Group. ©2026 The LEGO Group.

BLUEY (word mark and character logos) are trade marks of Ludo Studio Pty Limited and are used under license. BLUEY logo © Ludo Studio Pty Limited 2018.
Licensed by BBC Studios. BBC is a trade mark of the British Broadcasting Corporation and is used under licence. BBC logo © BBC 1996.