



11203



2



**WARNING: CHOKING HAZARD.**  
Toy contains small parts and a small ball.  
Not for children under 3 years.

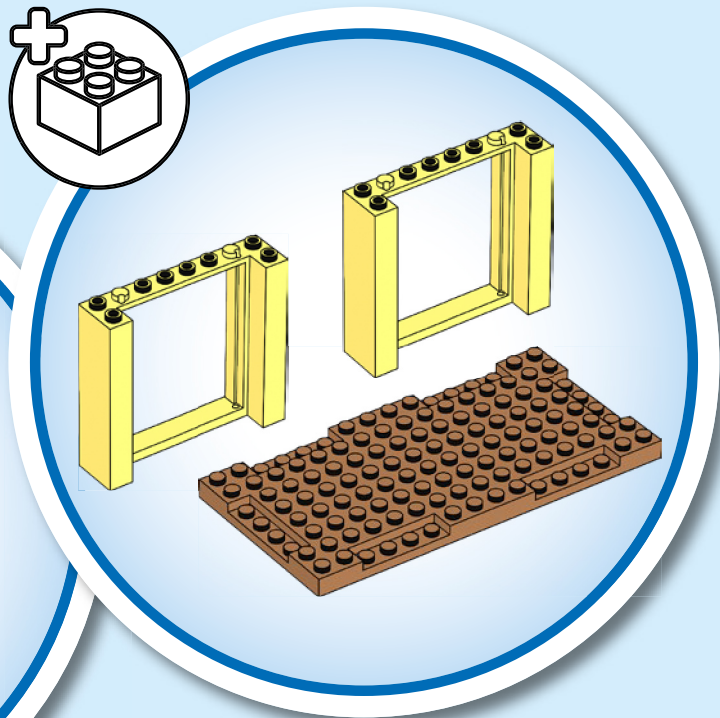
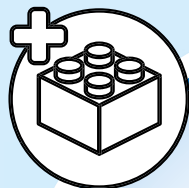
**AVERTISSEMENT :**

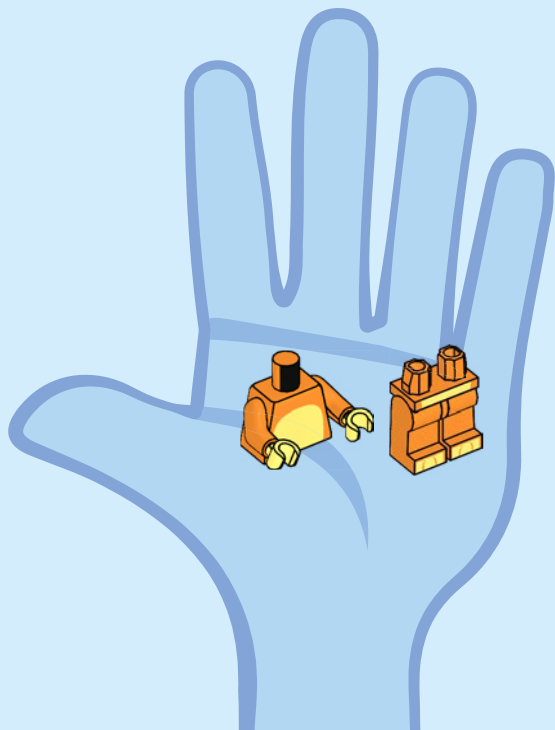
**RISQUE D'ÉTOUFFEMENT.** Le jouet contient des petites pièces ainsi qu'une petite boule. Il ne convient pas aux enfants de moins de 3 ans.

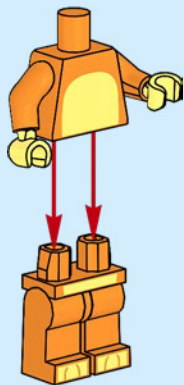
**ADVERTENCIA:**

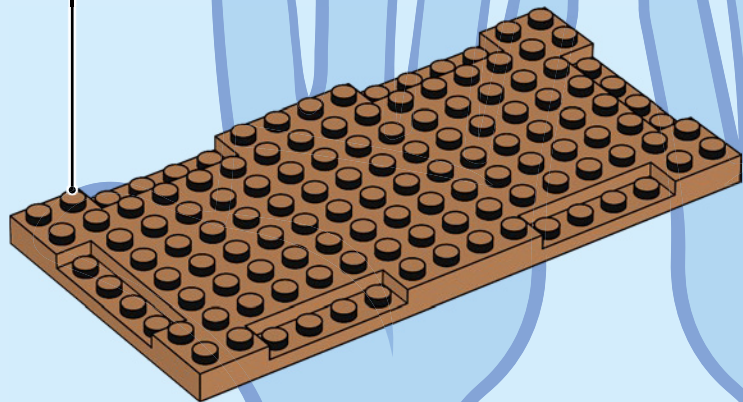
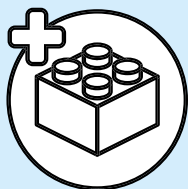
**PELIGRO DE ASFIXIA.**

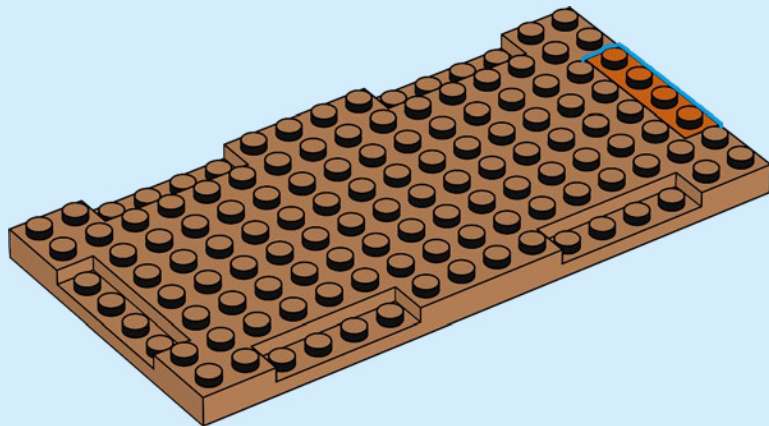
Juguete que contiene partes pequeñas y una pelota pequeña. No recomendado para niños menores de 3 años.

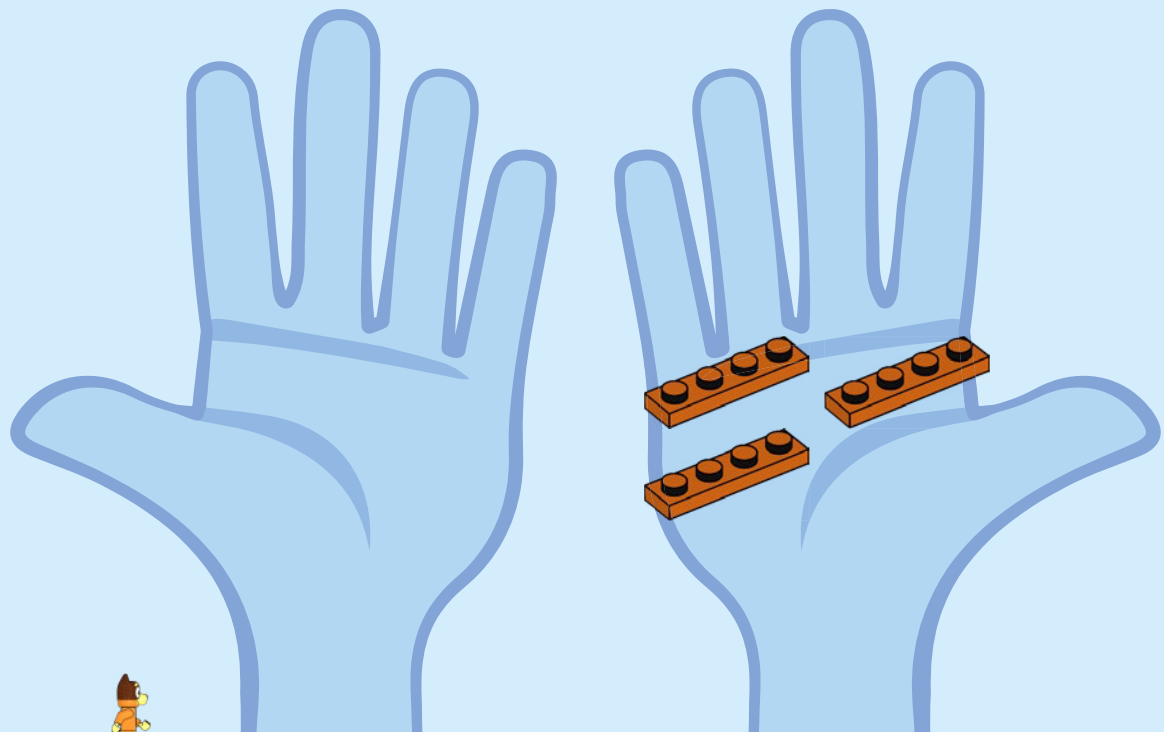


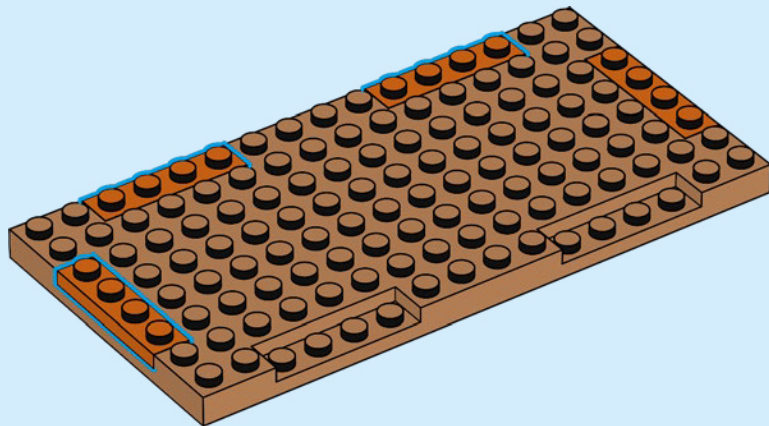


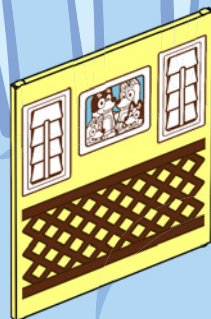
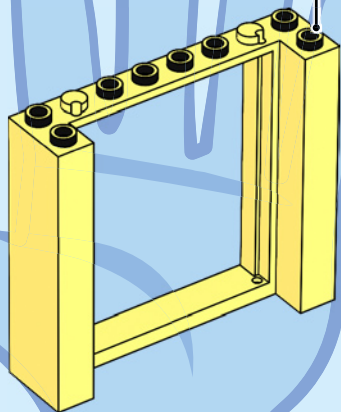
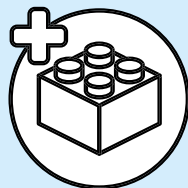


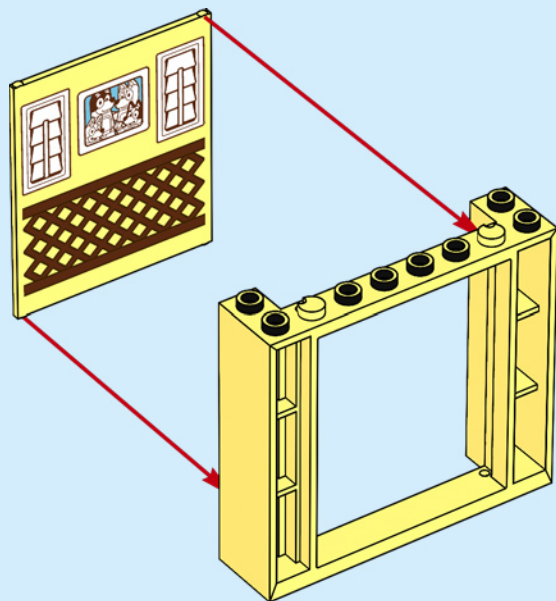


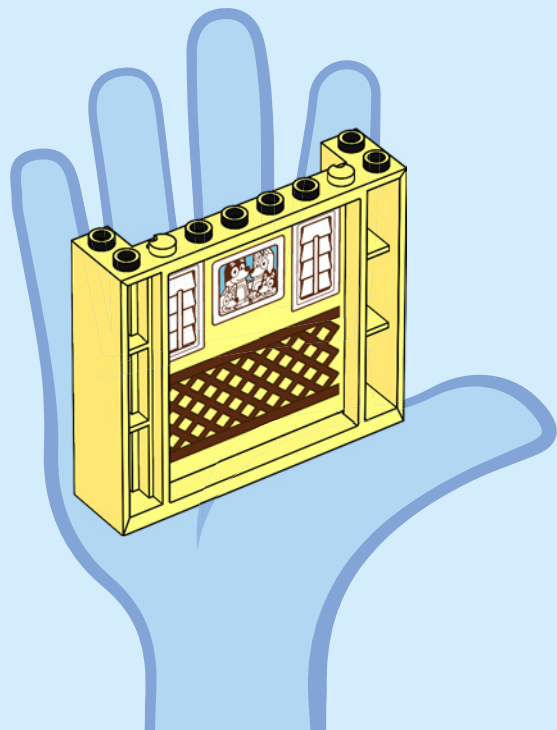


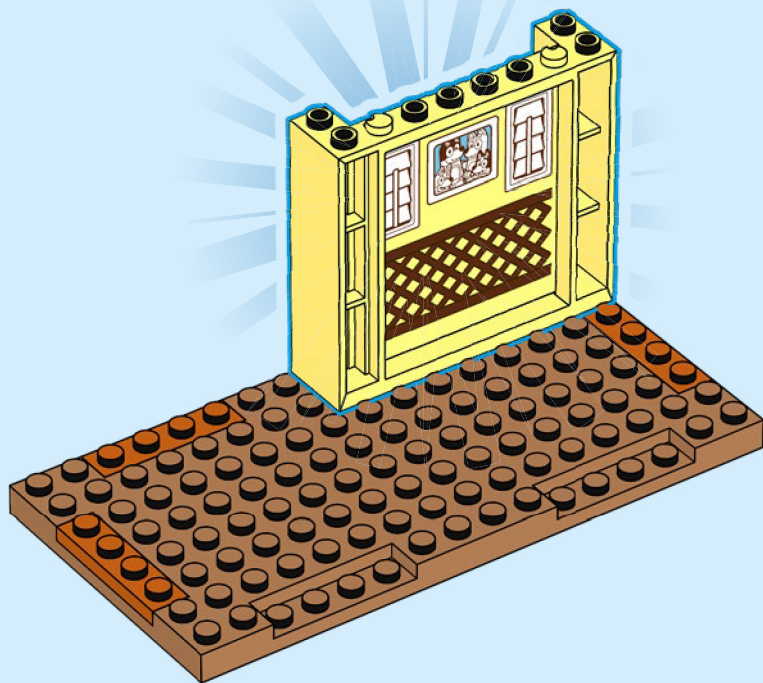


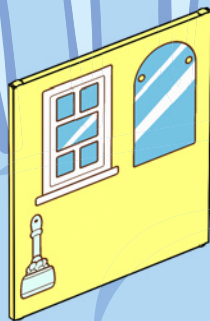
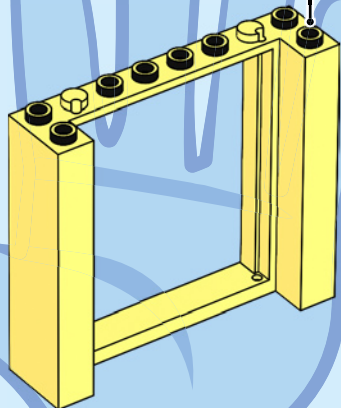
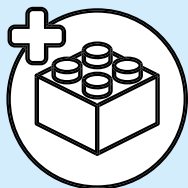


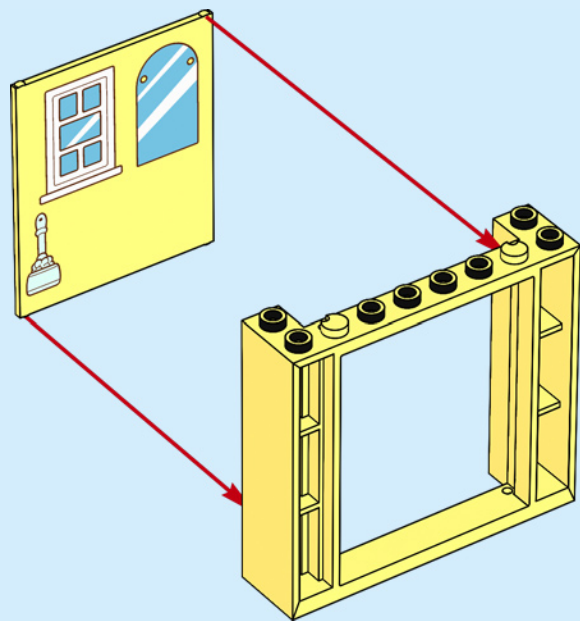


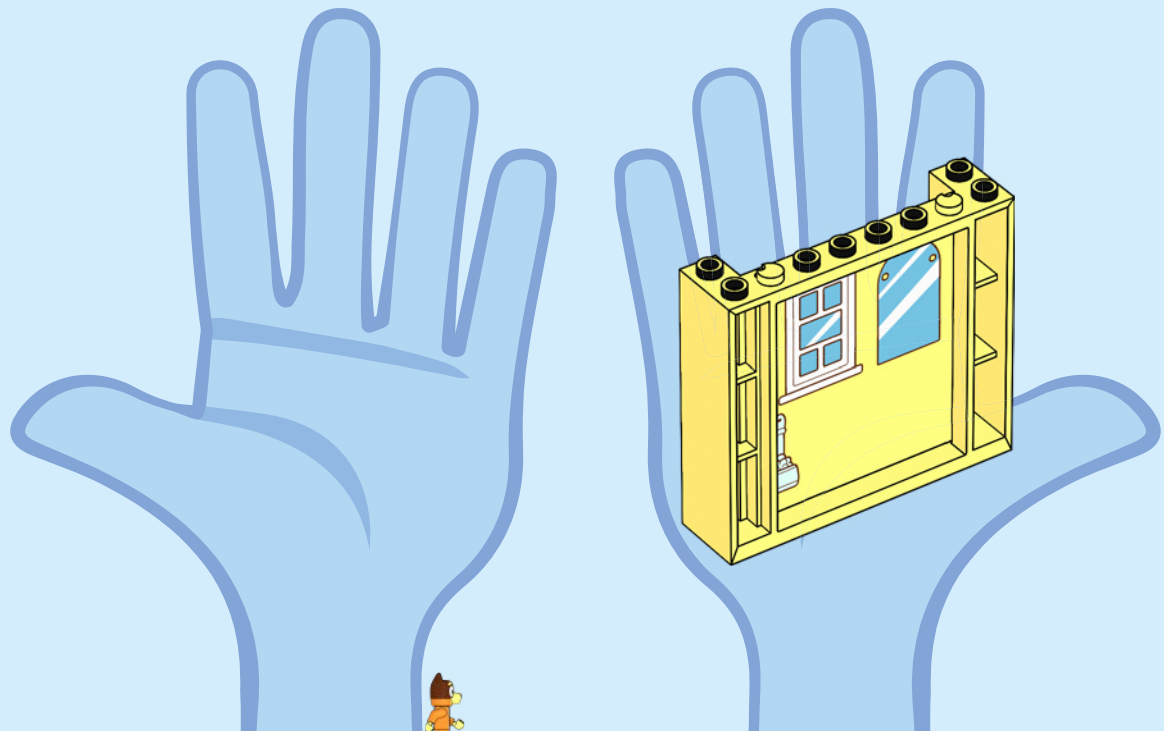


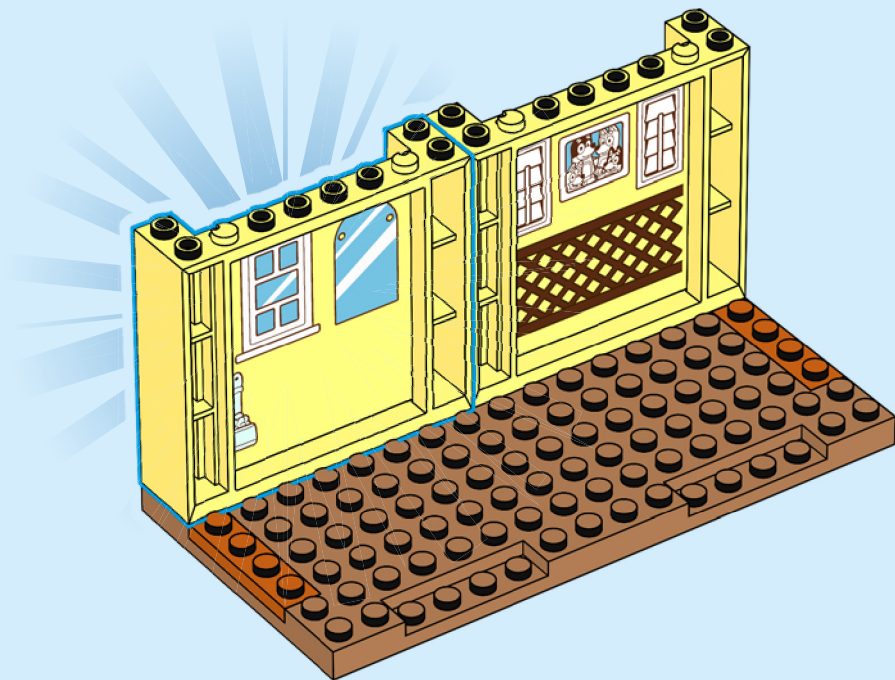


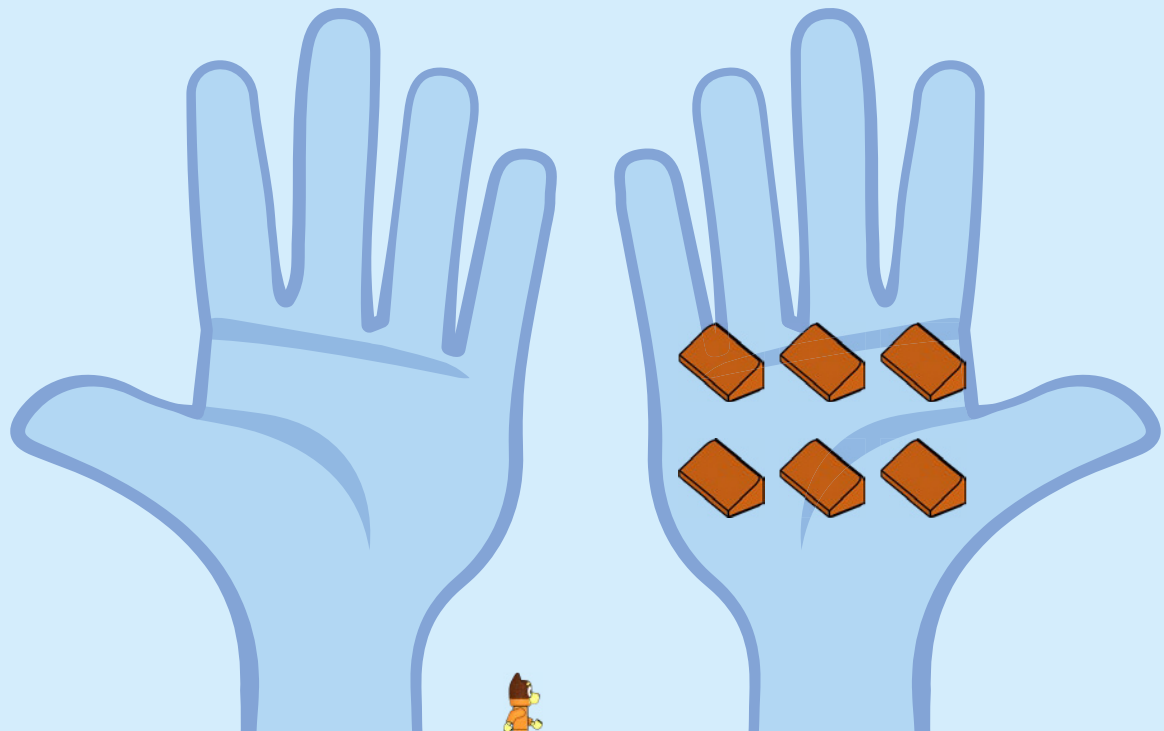


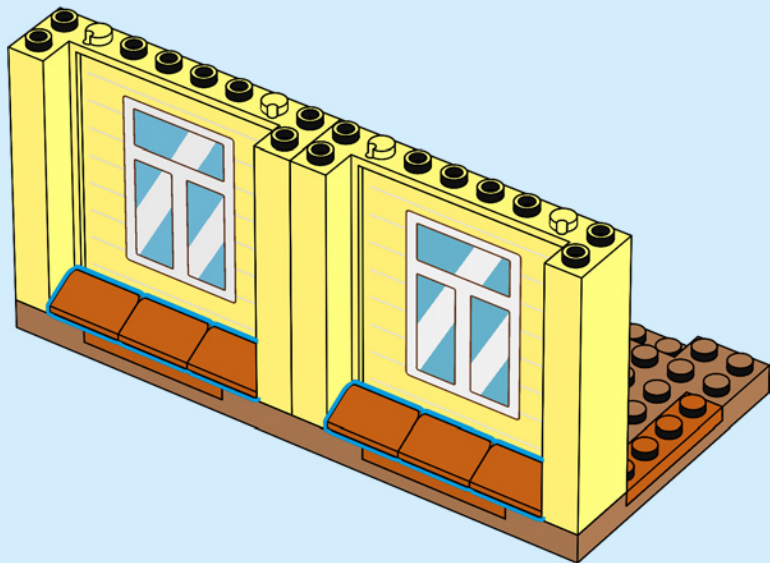


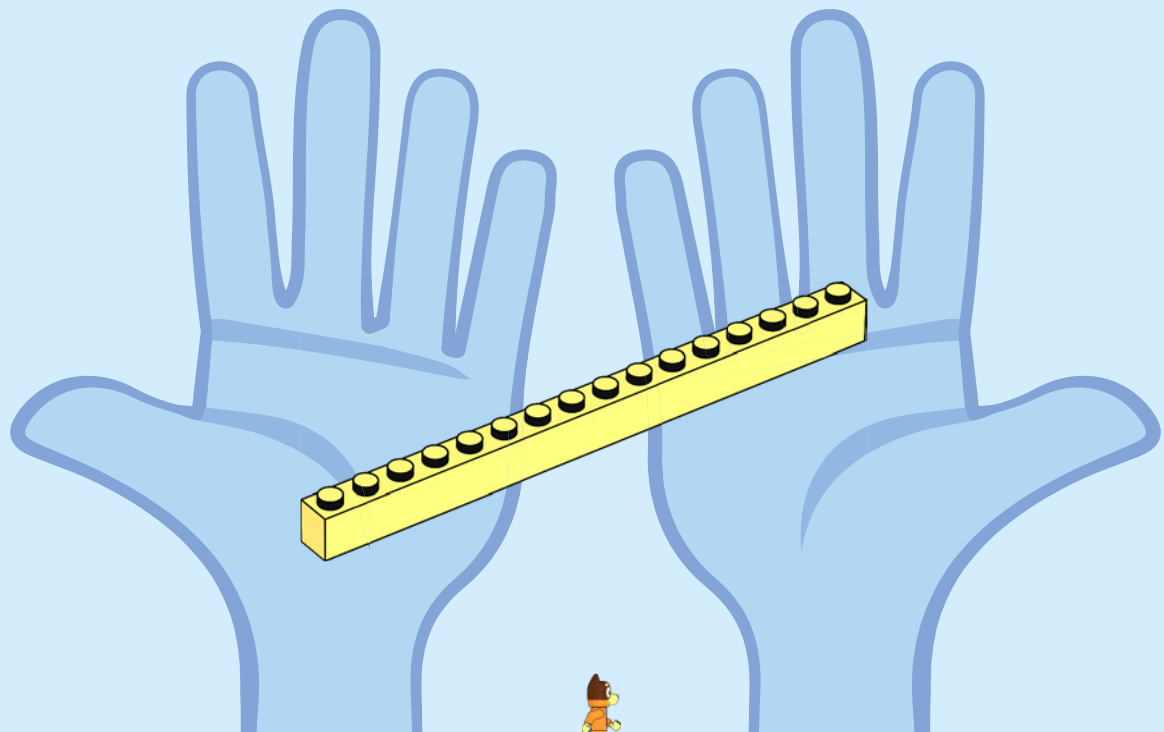


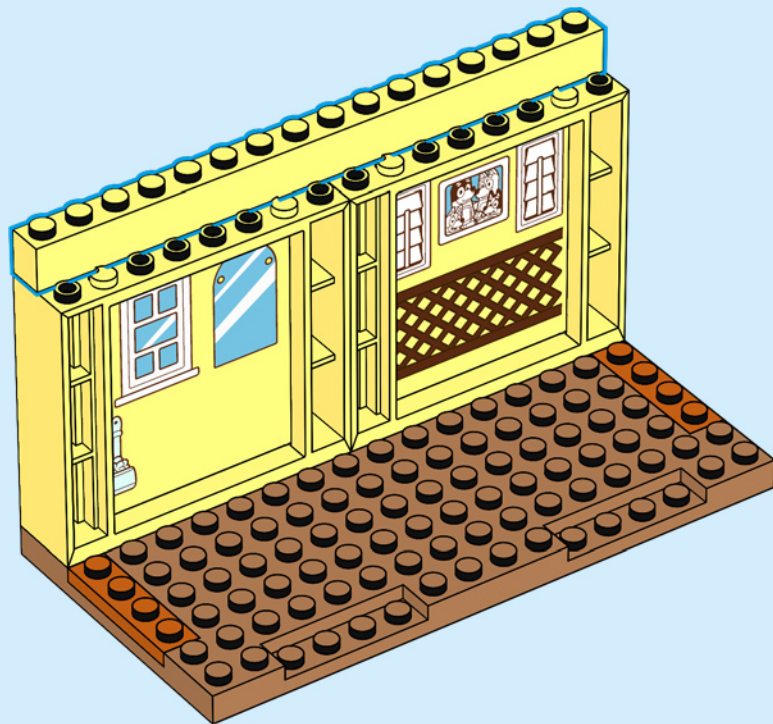


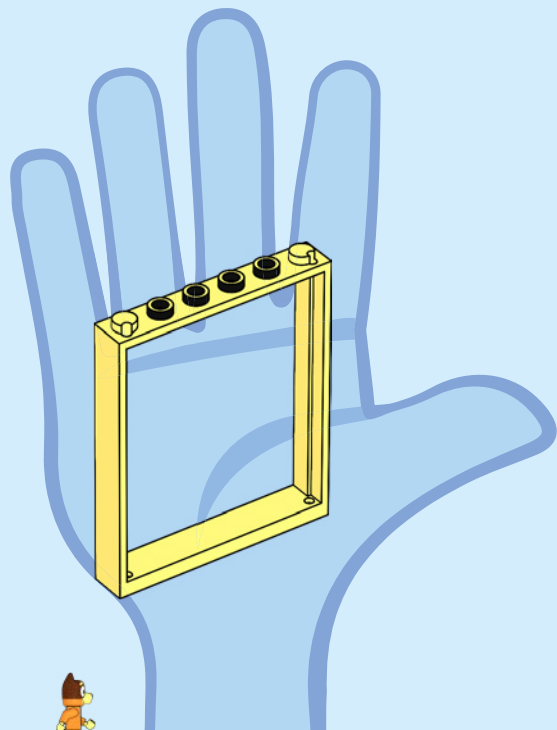
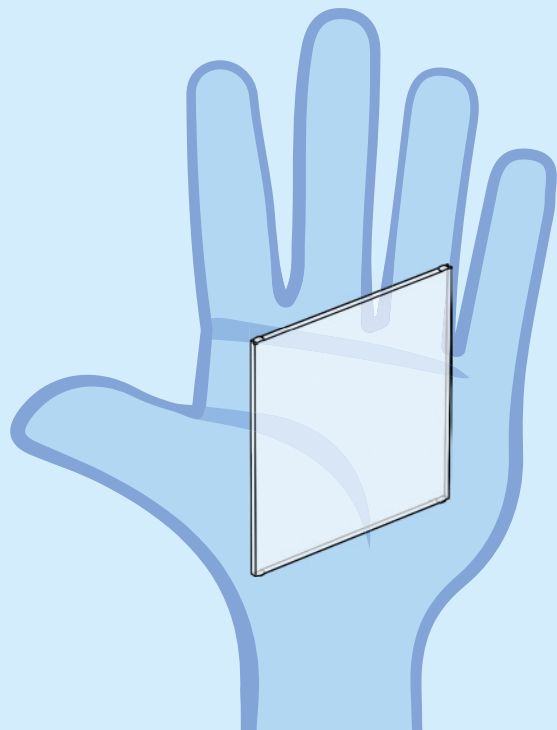


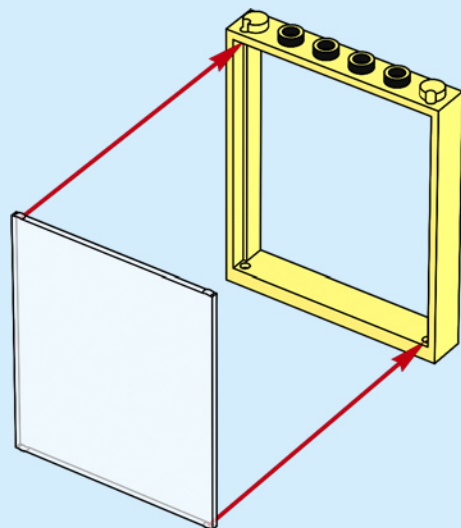


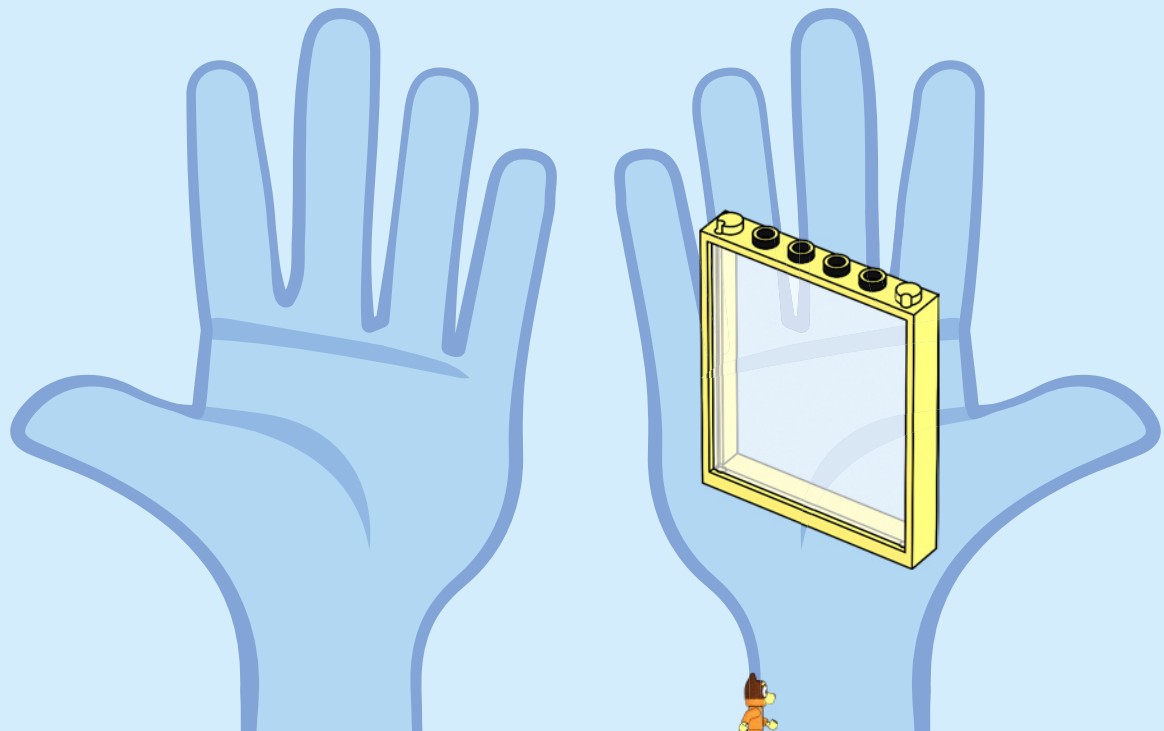


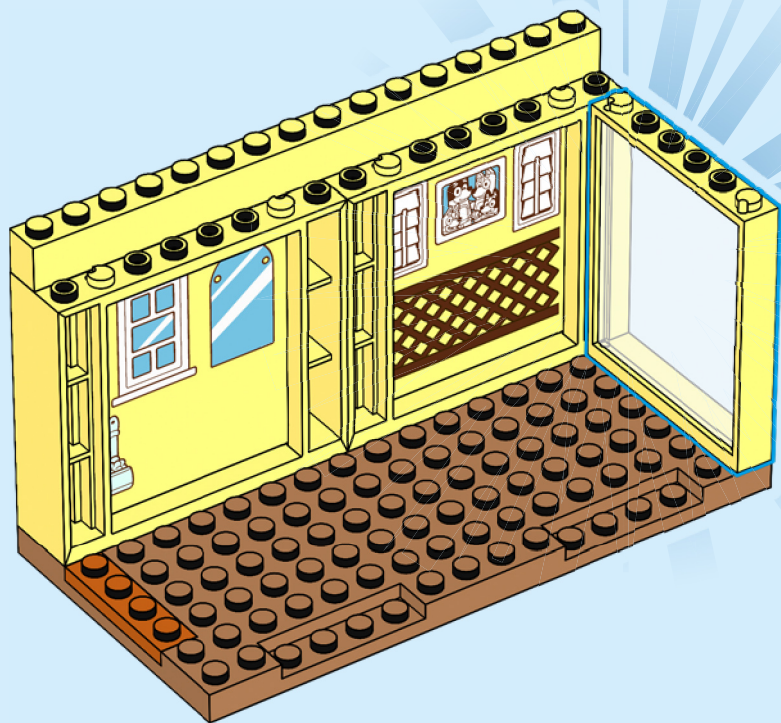


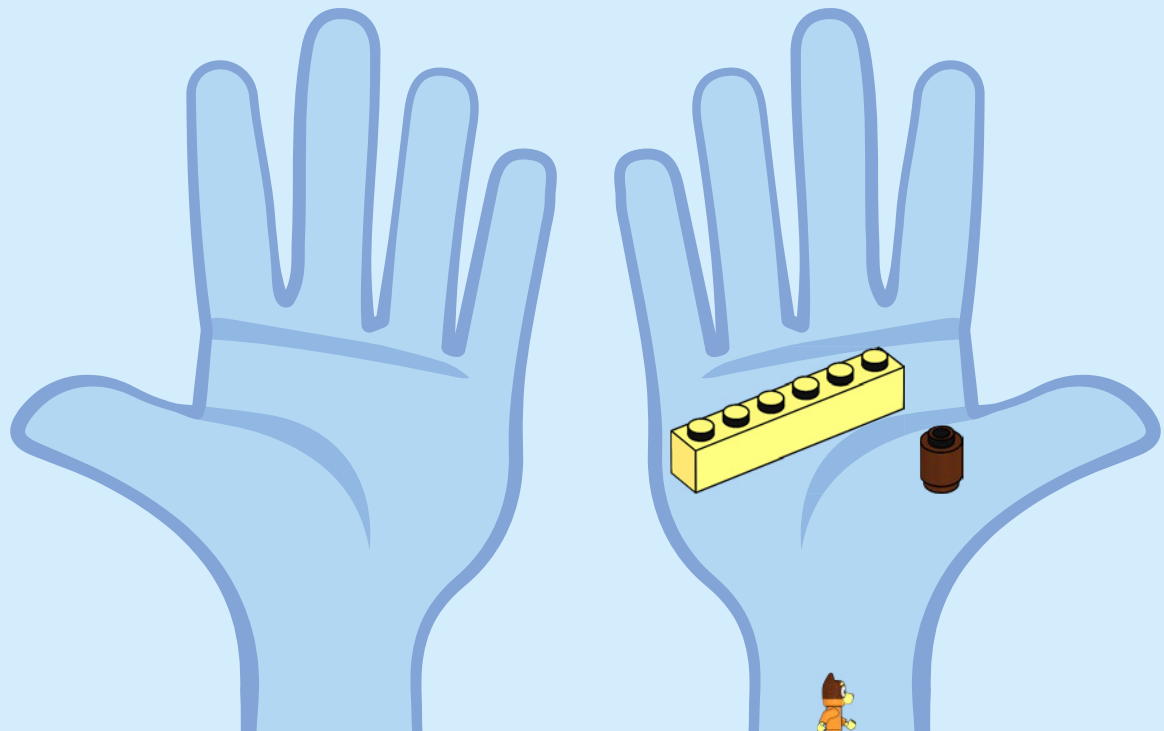


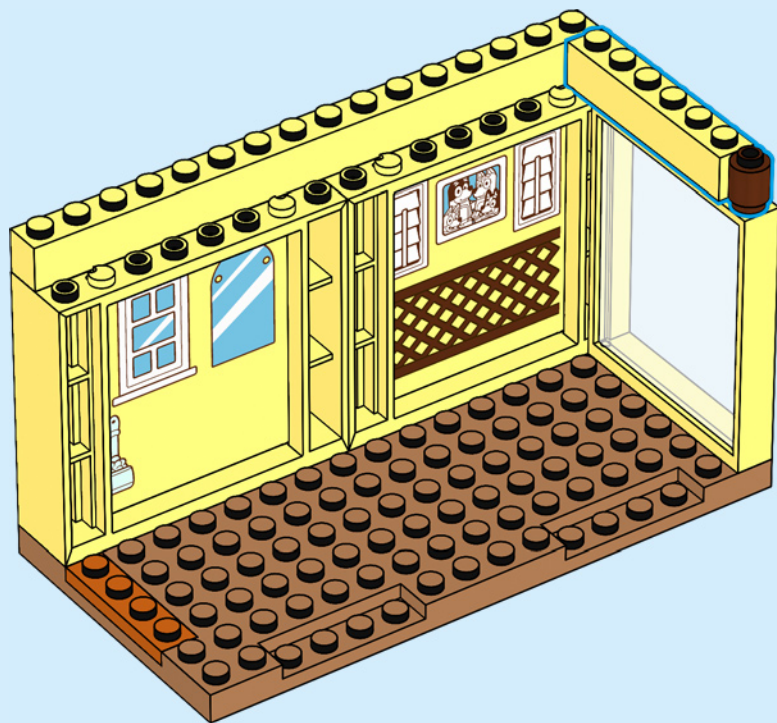


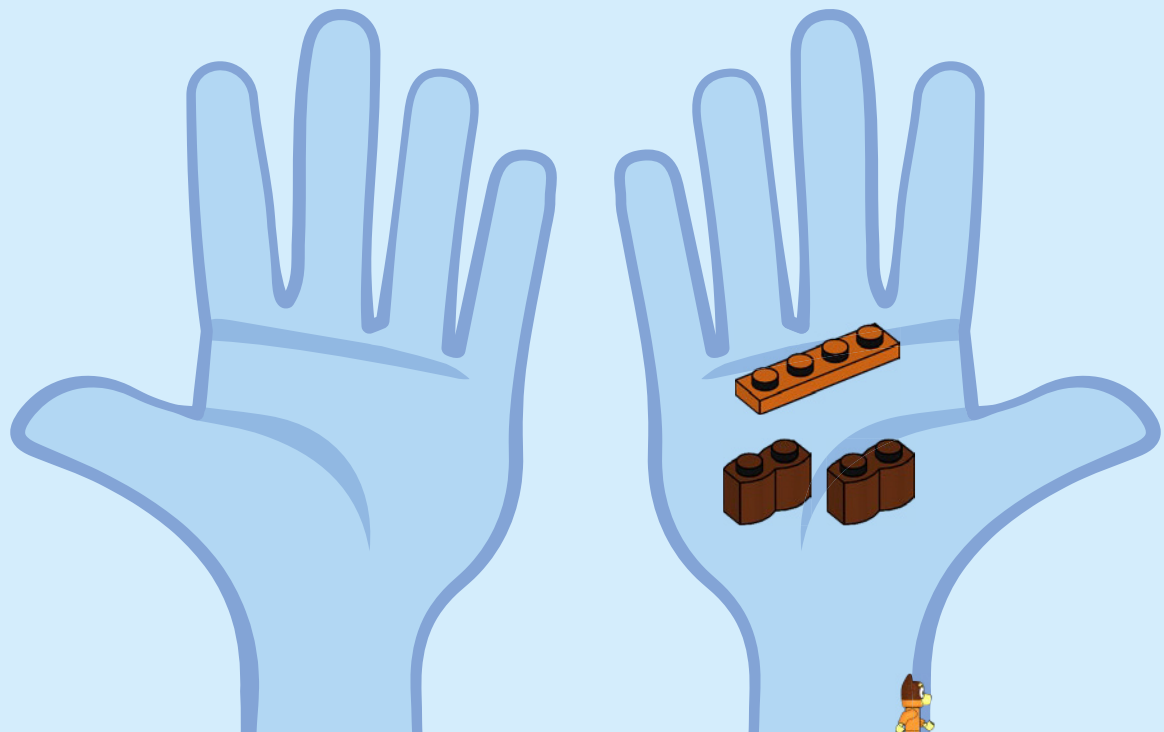


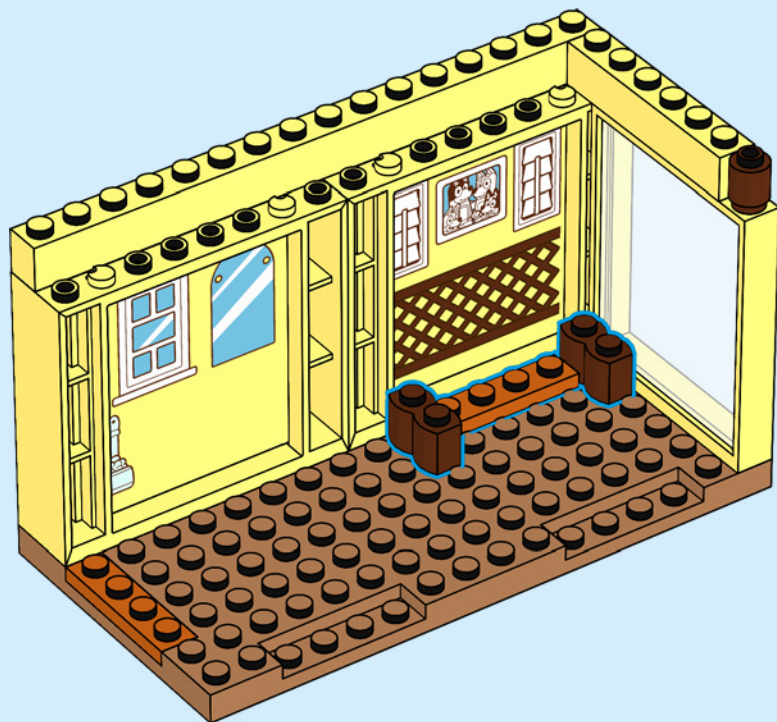


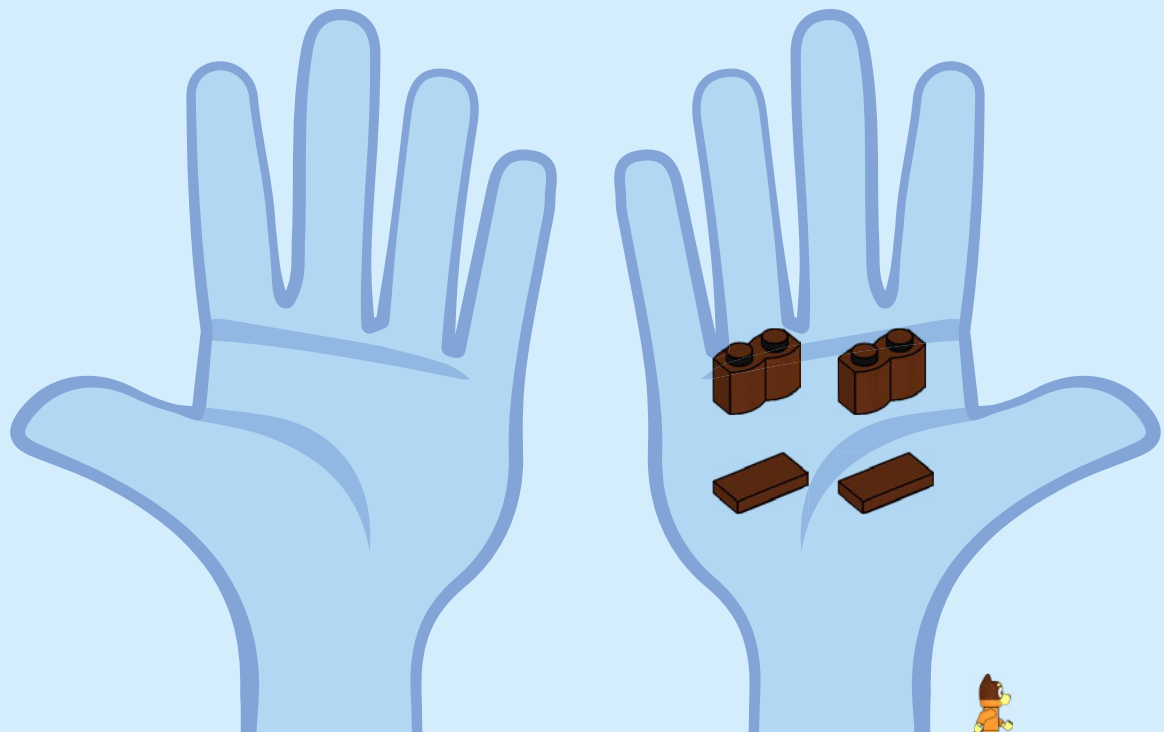


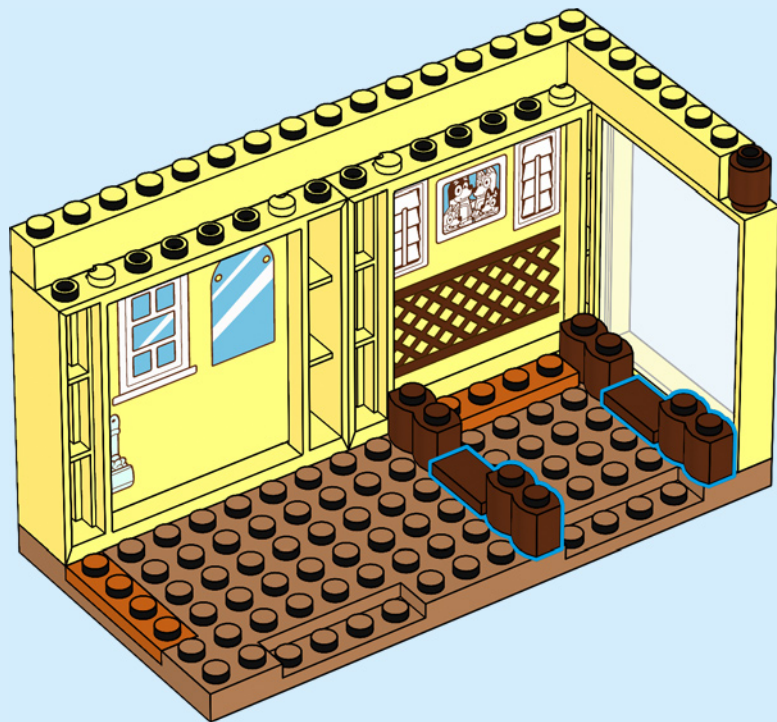


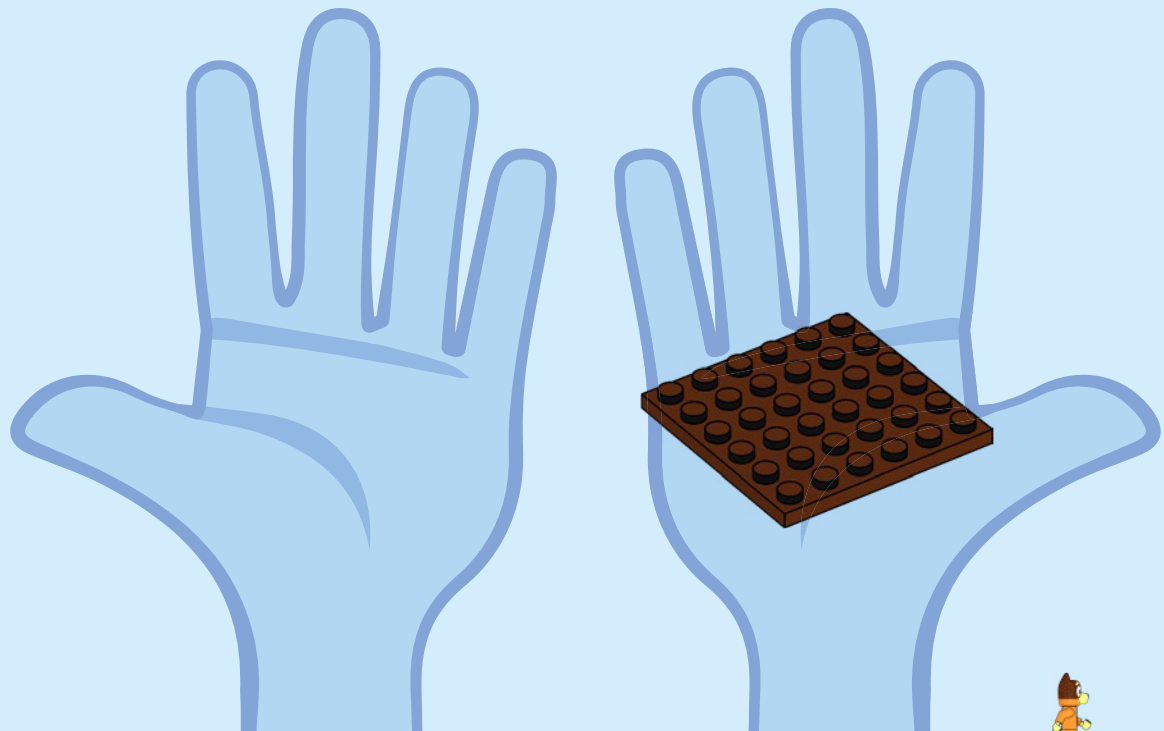


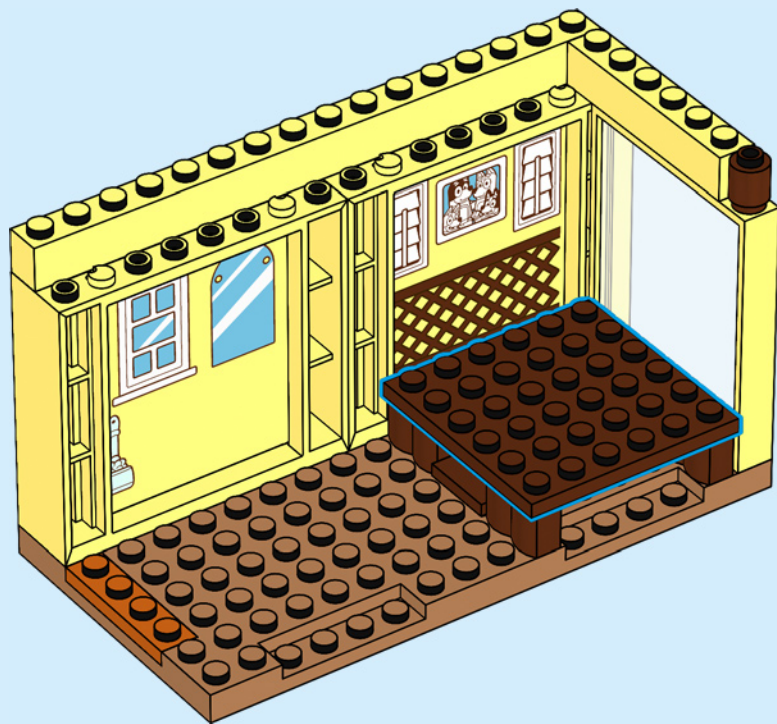


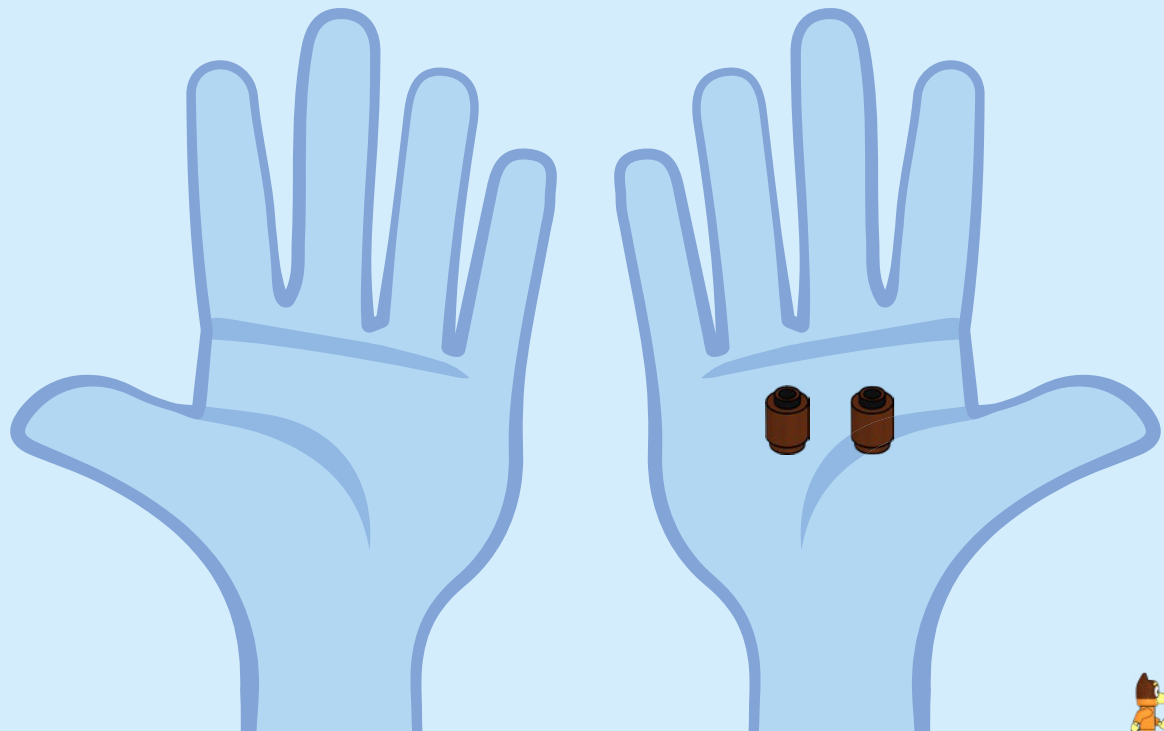


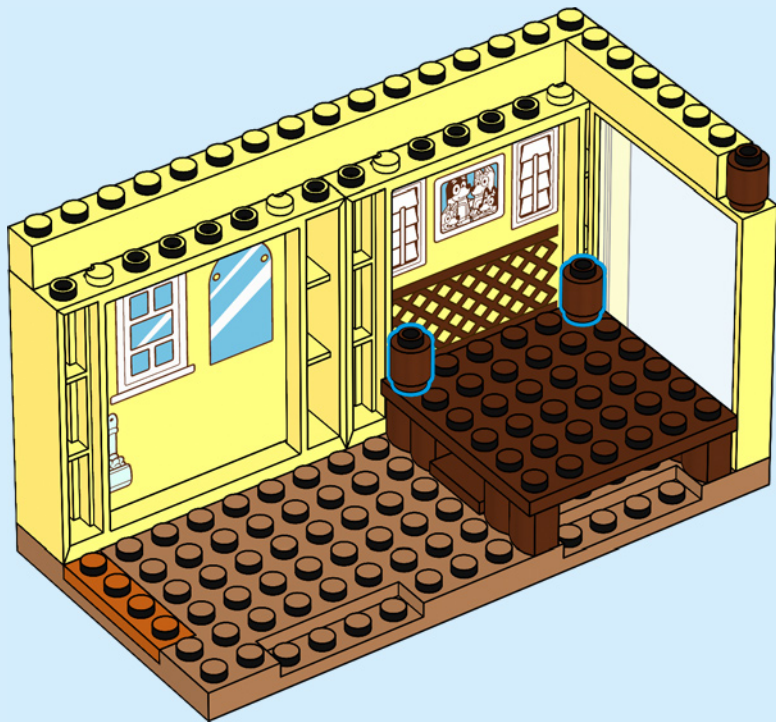


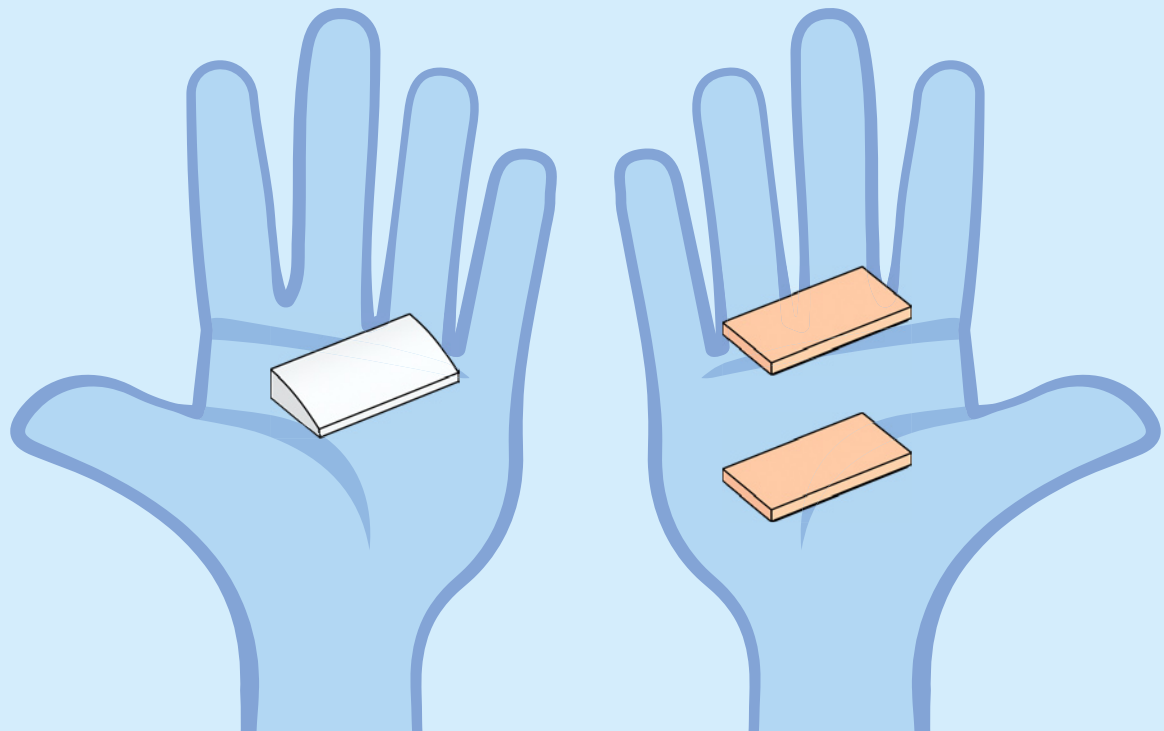


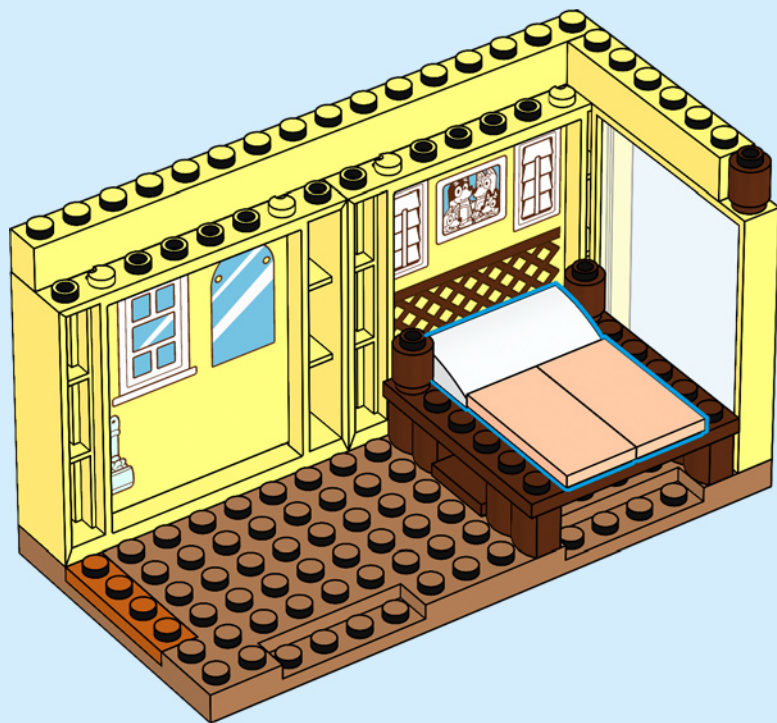


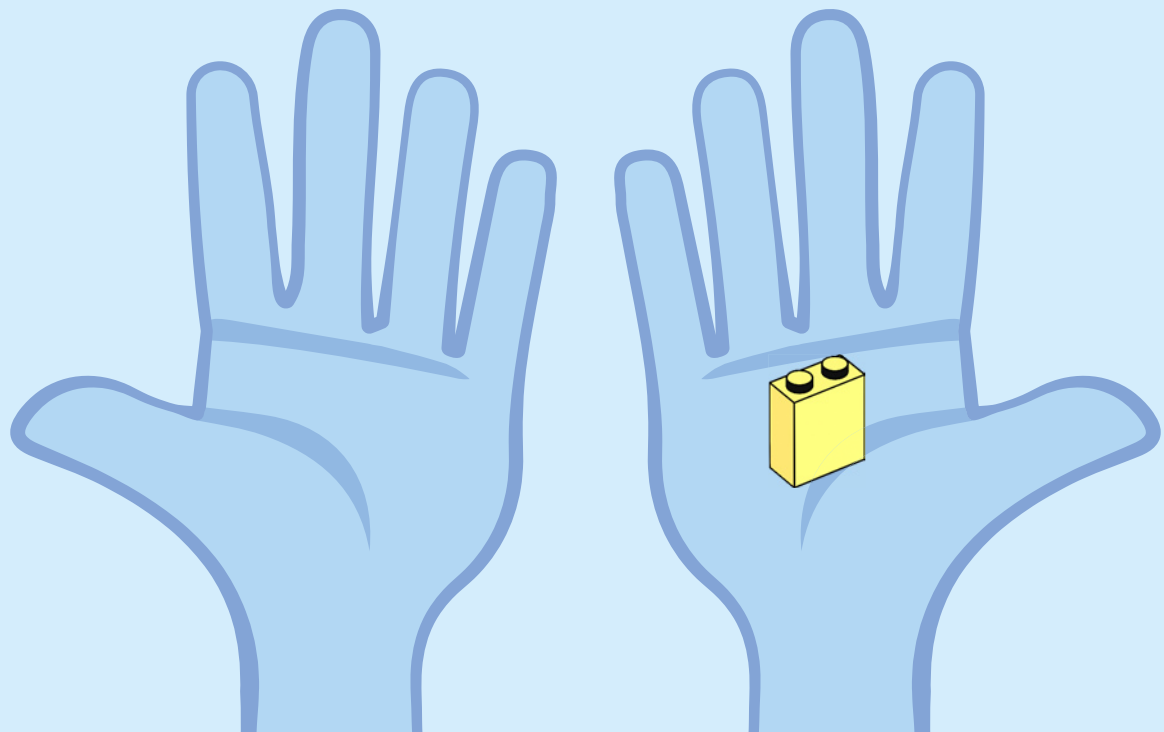


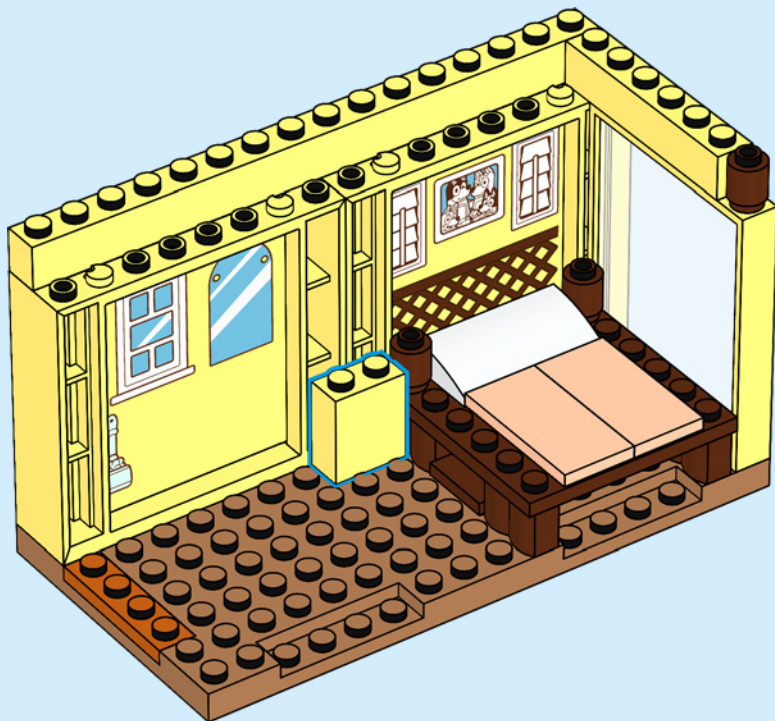


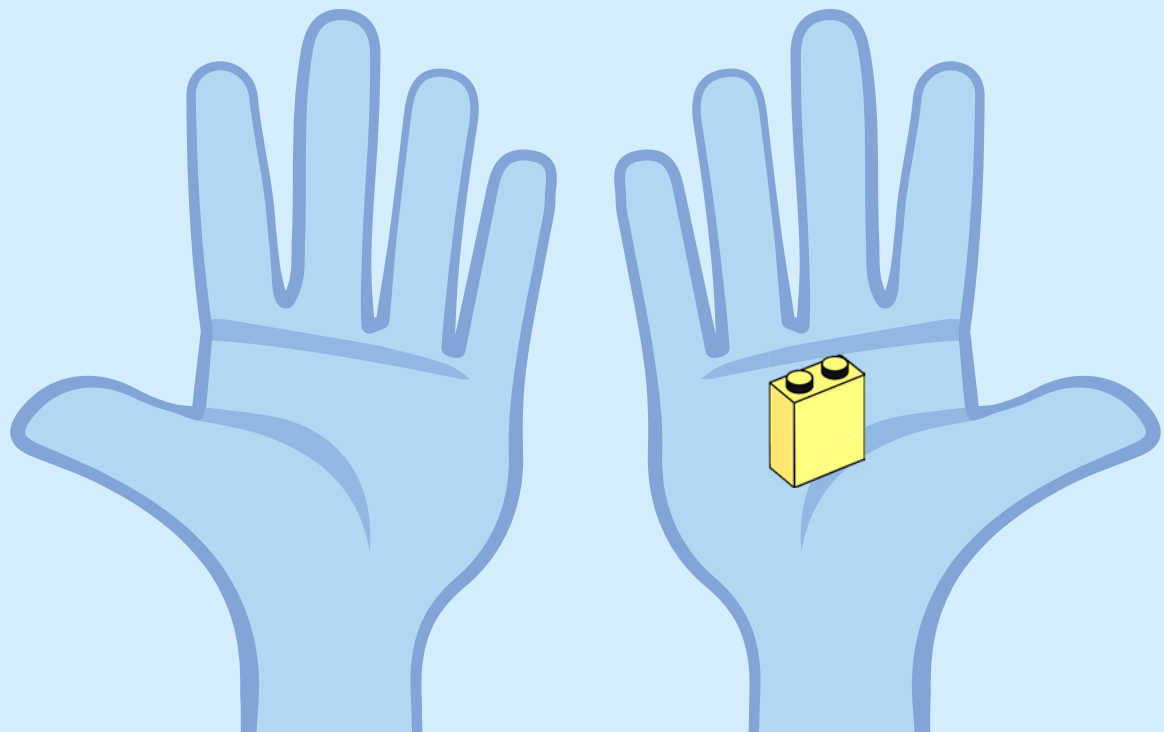


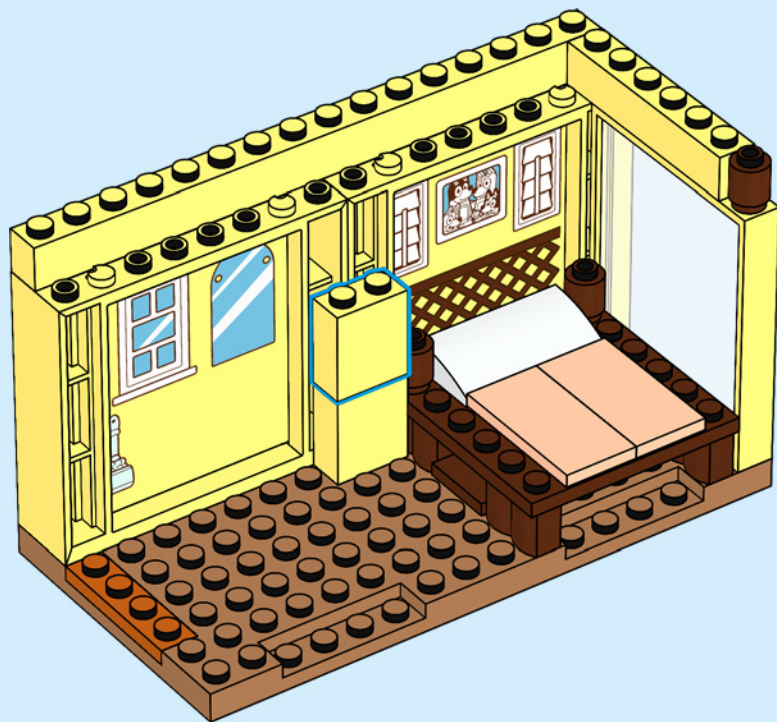


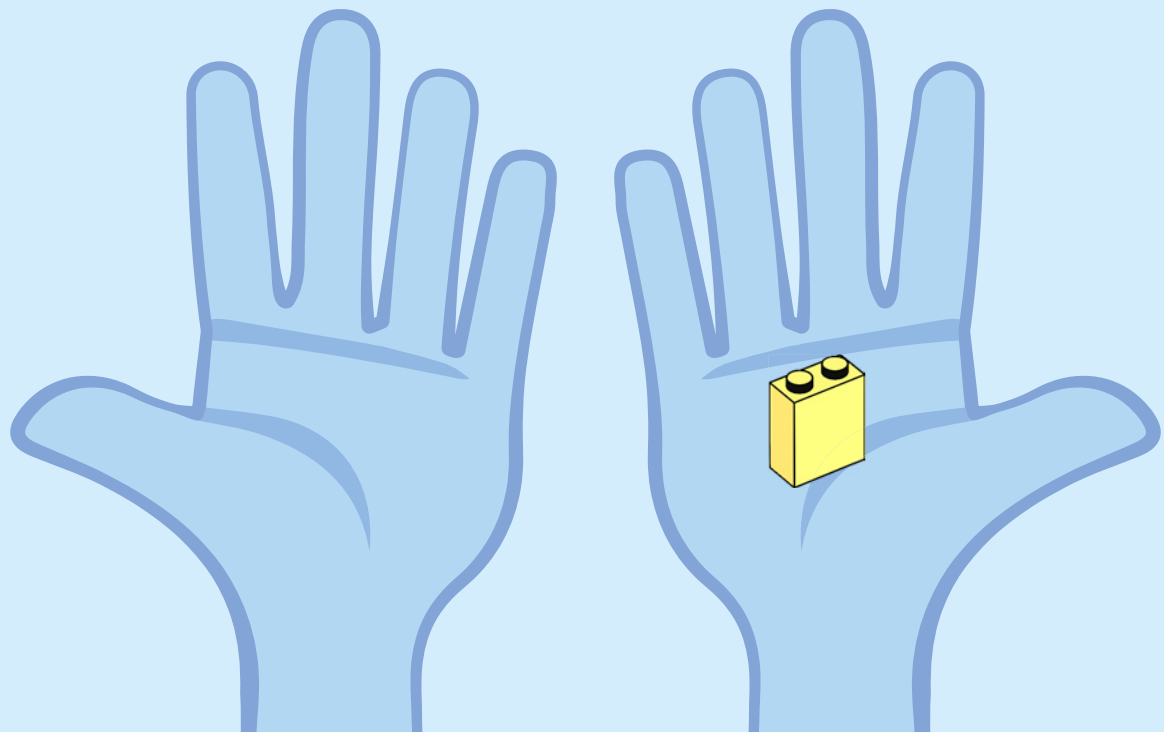


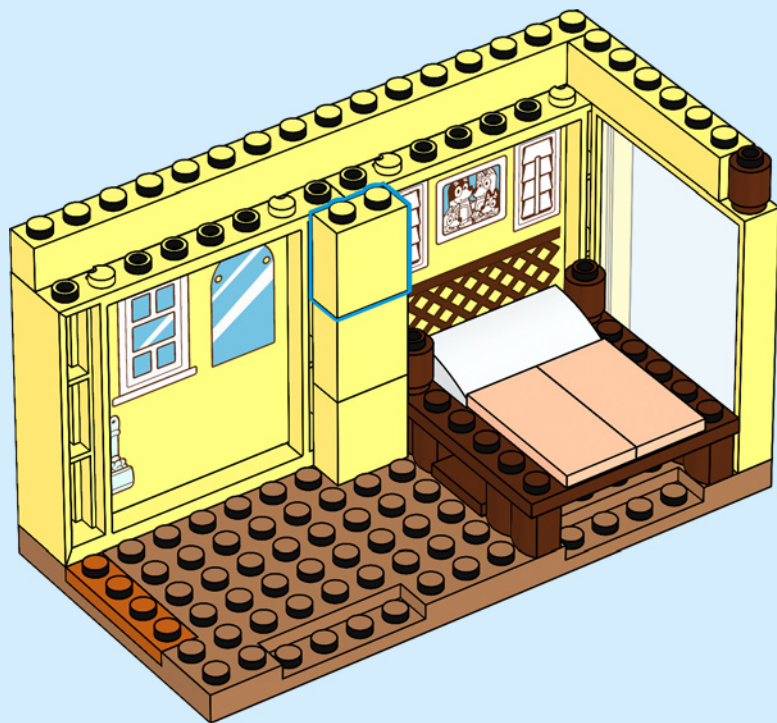


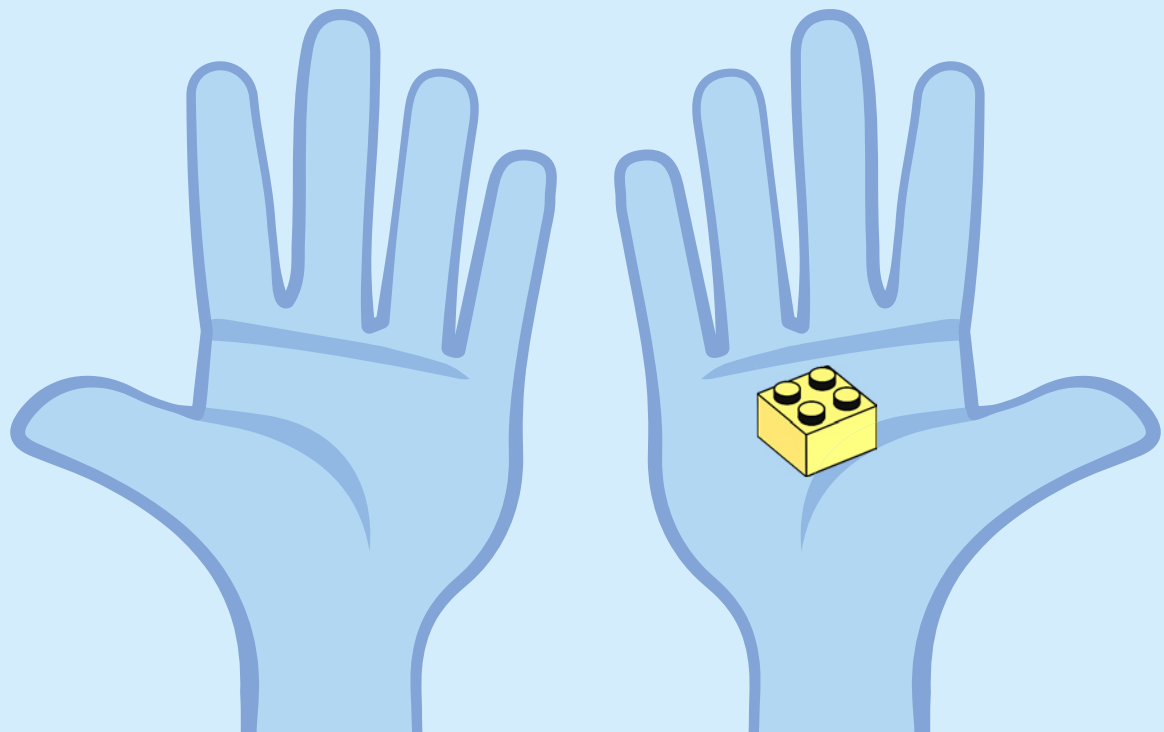


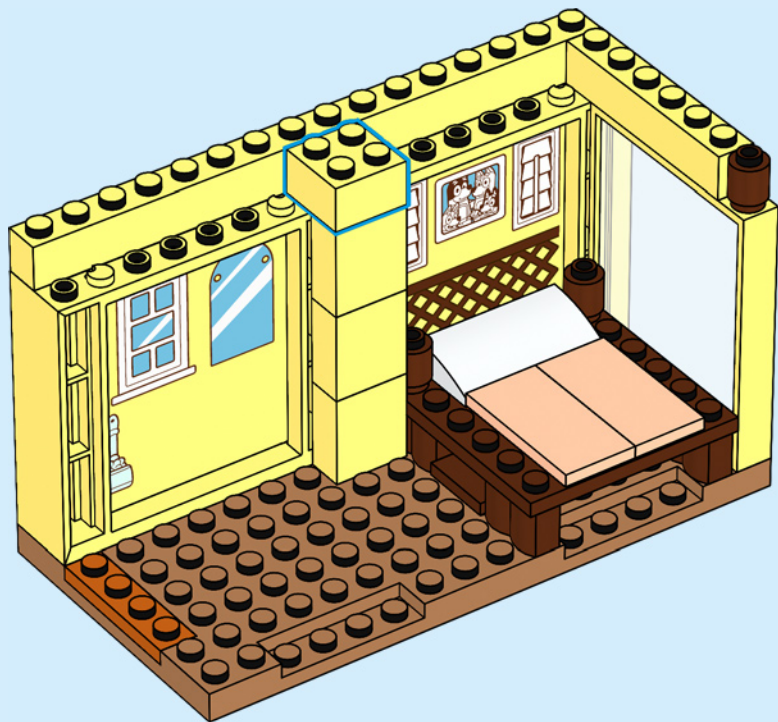


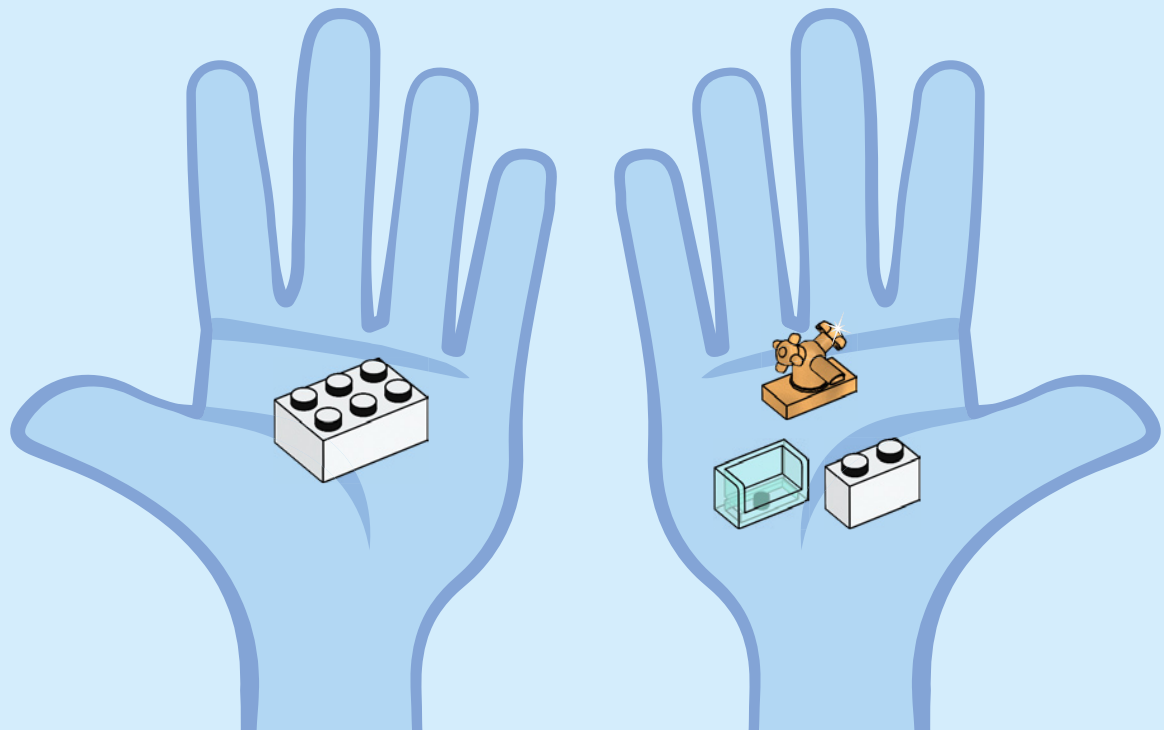


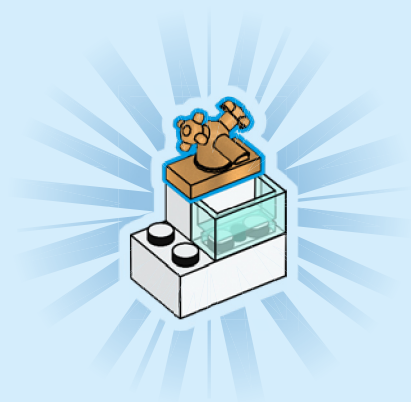
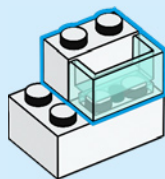
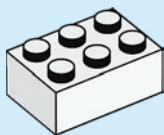


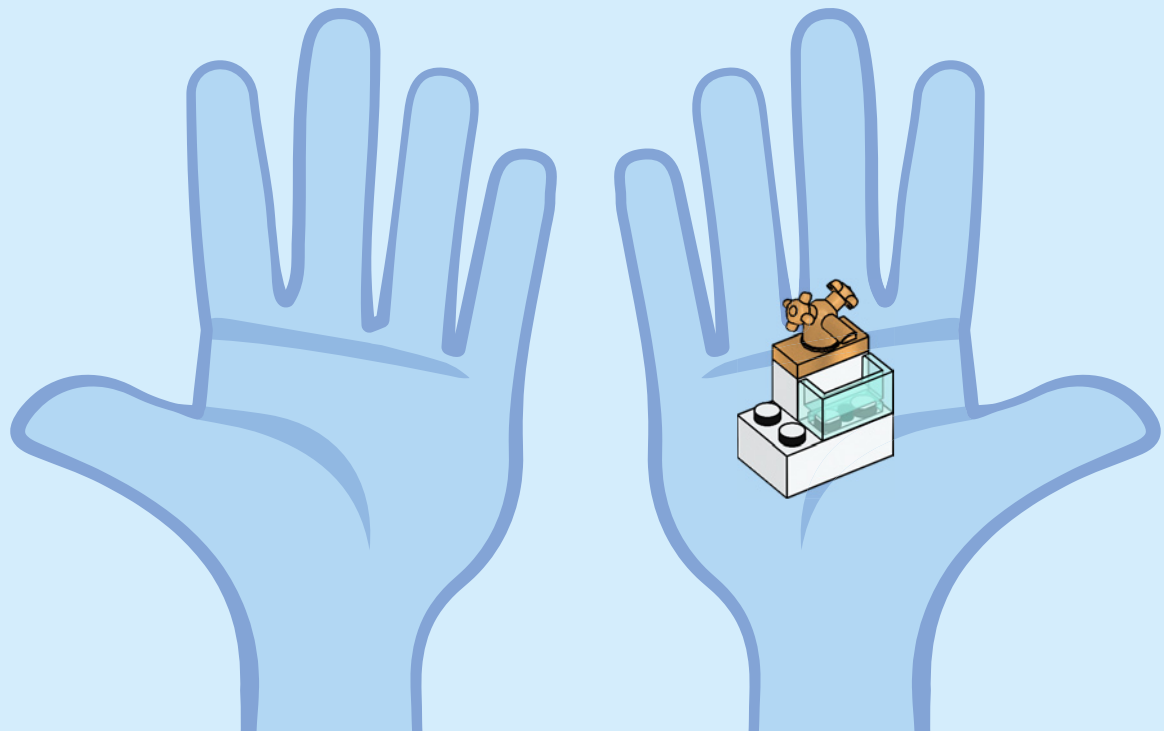




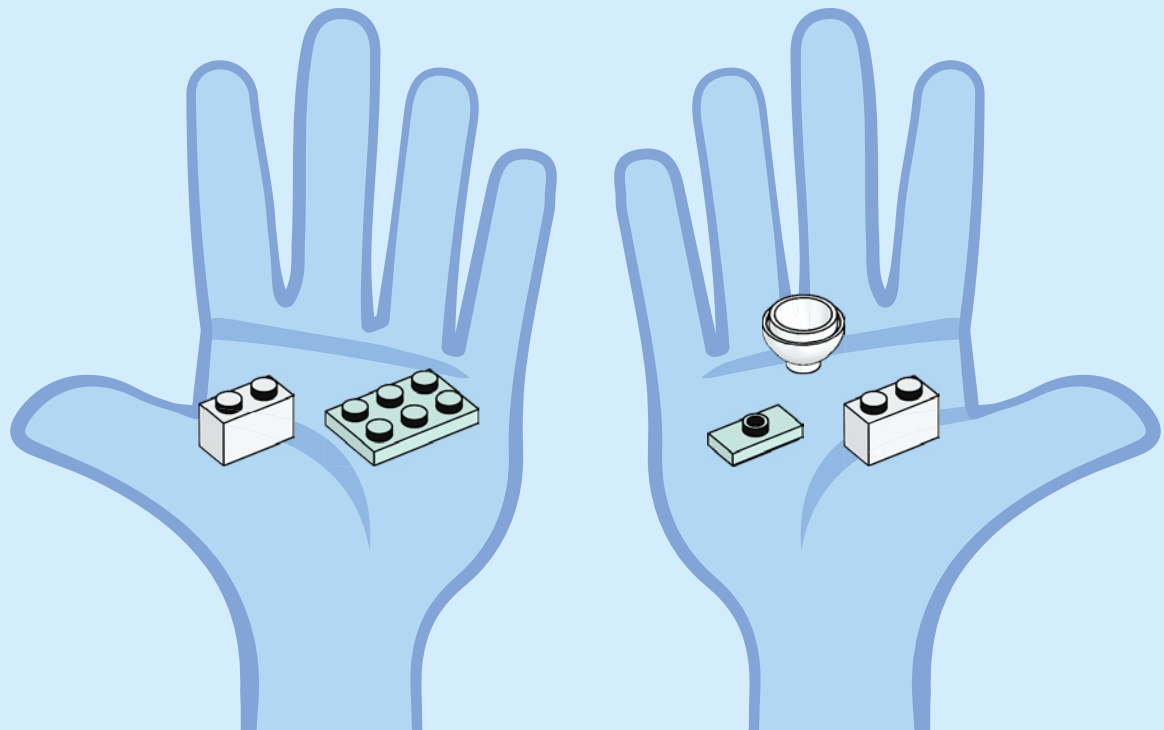


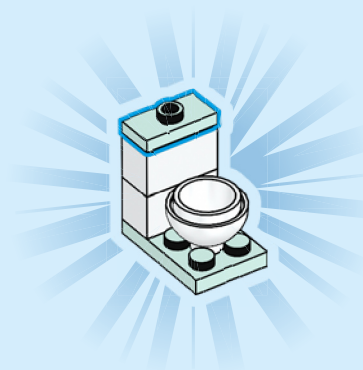
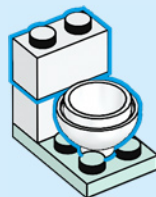
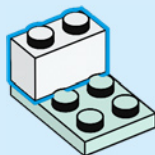
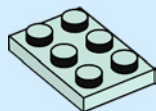


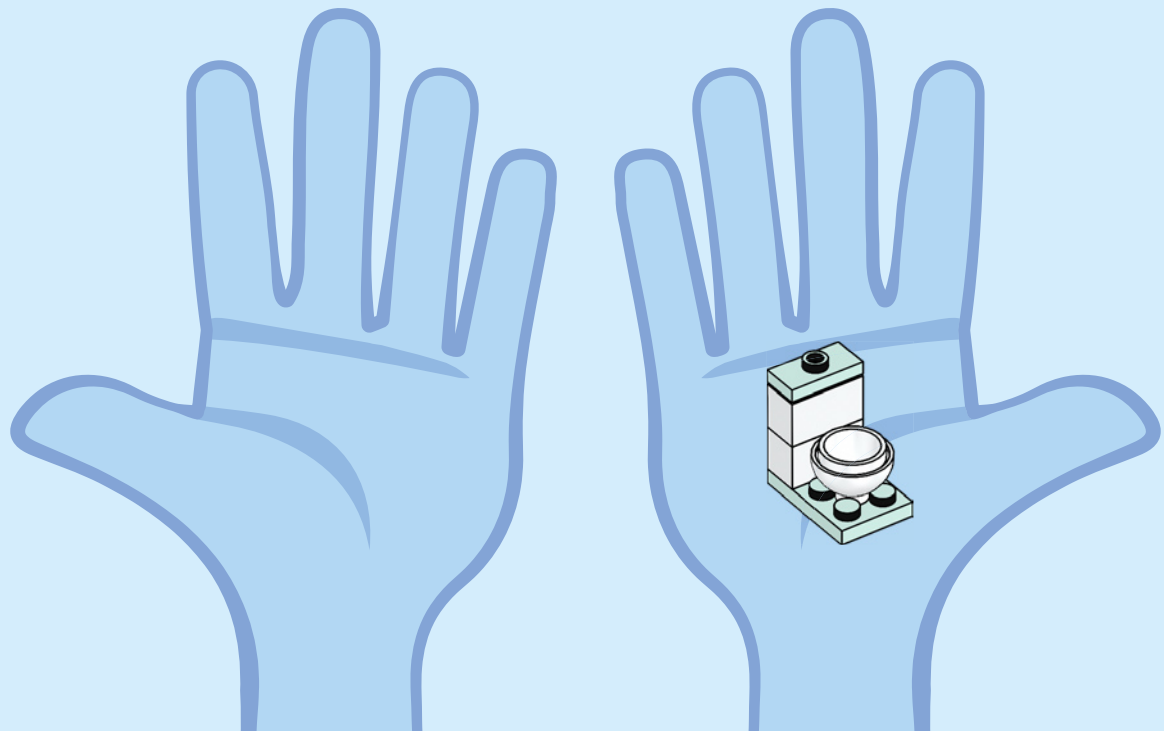


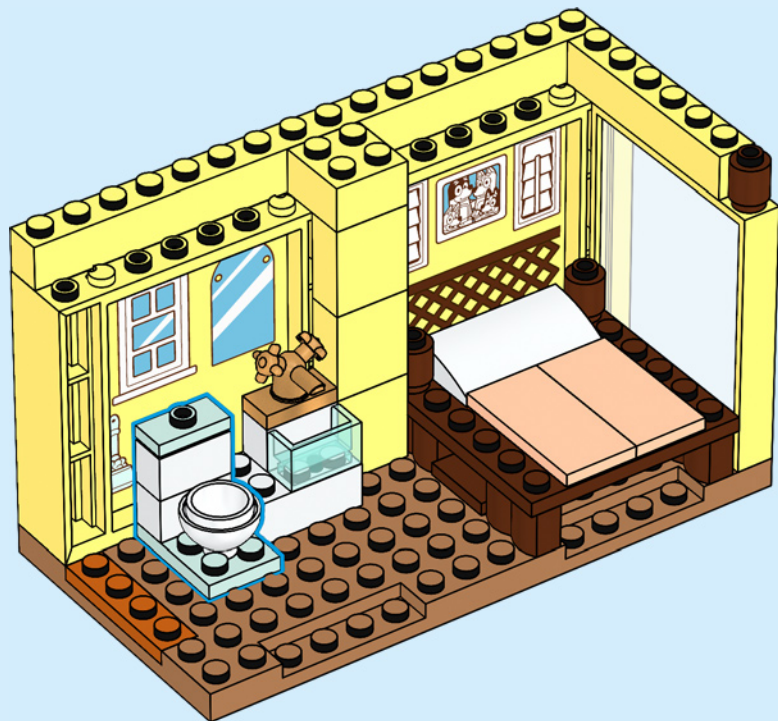


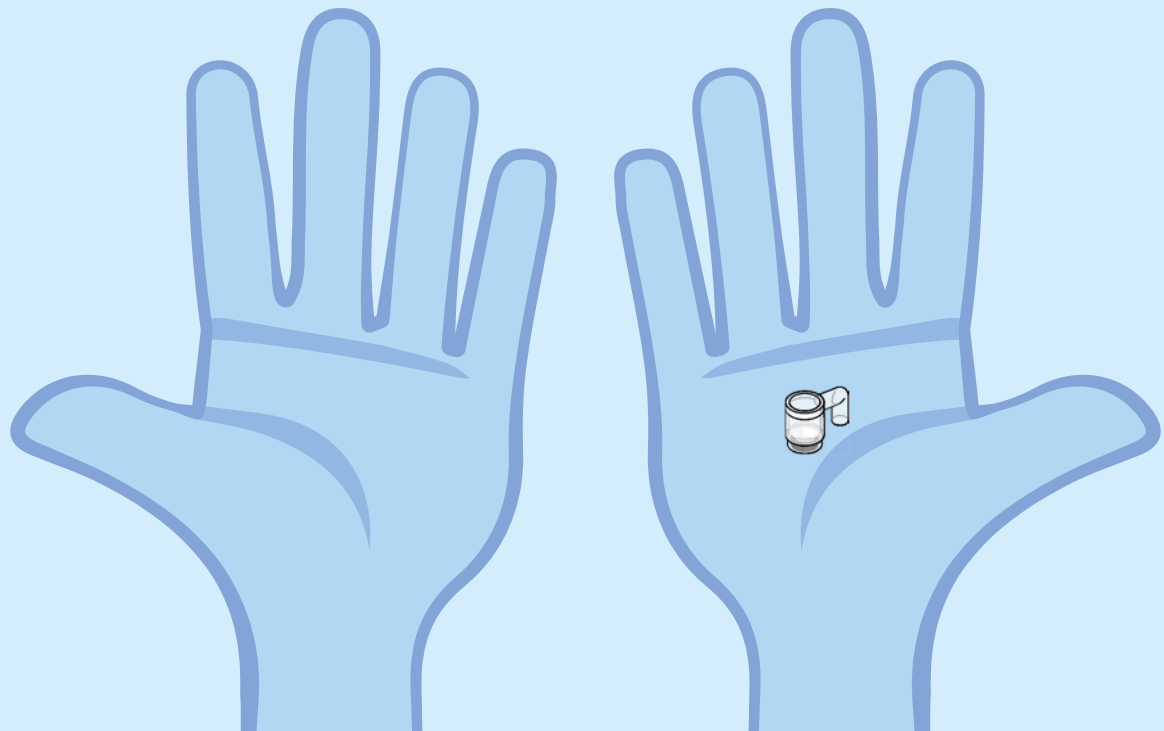


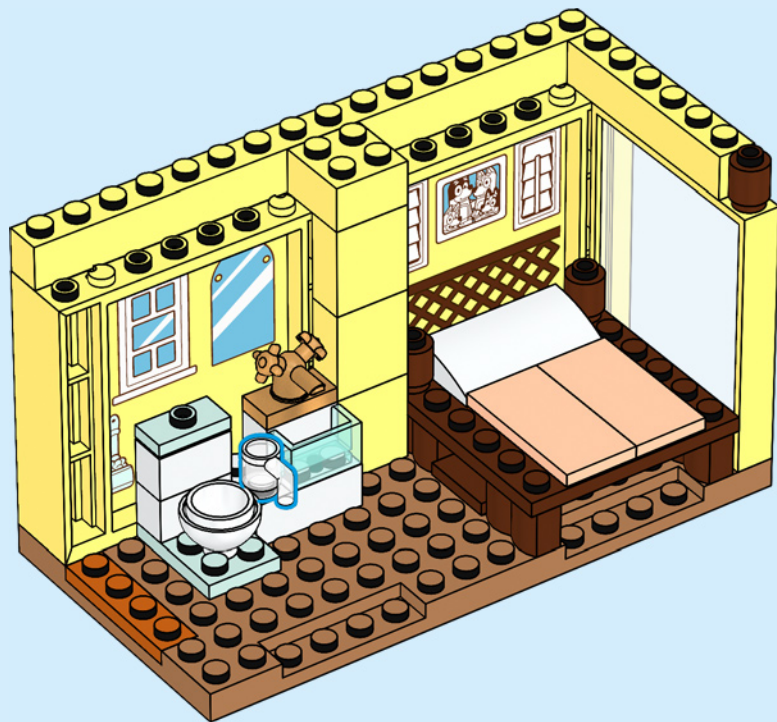


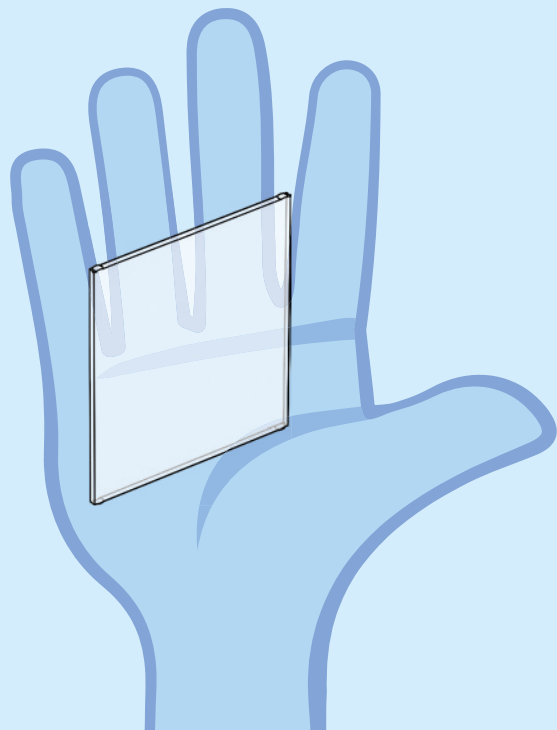
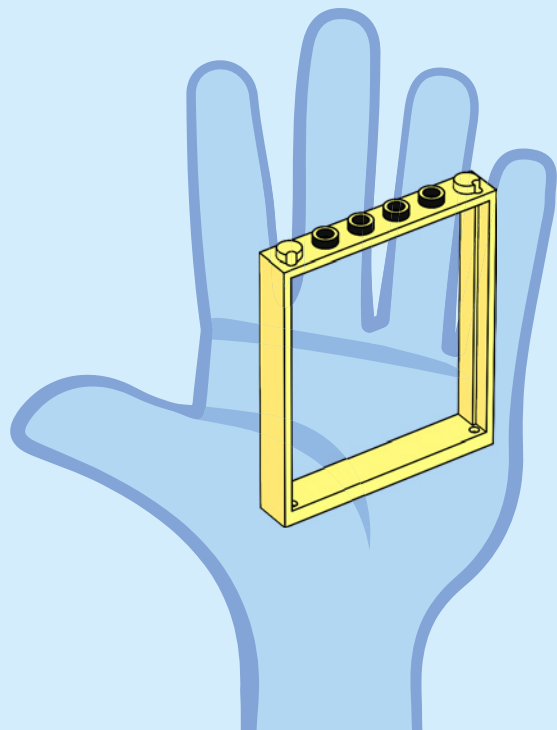


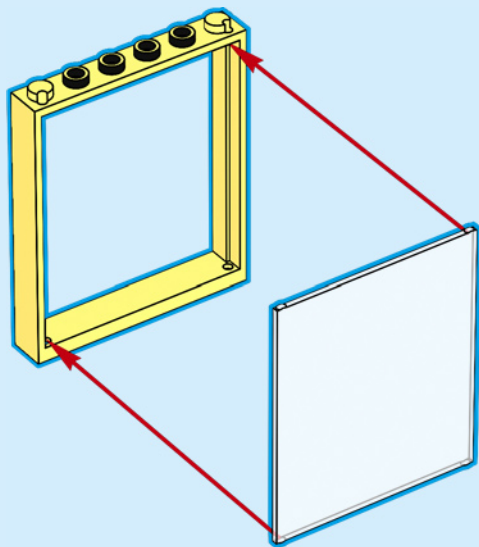


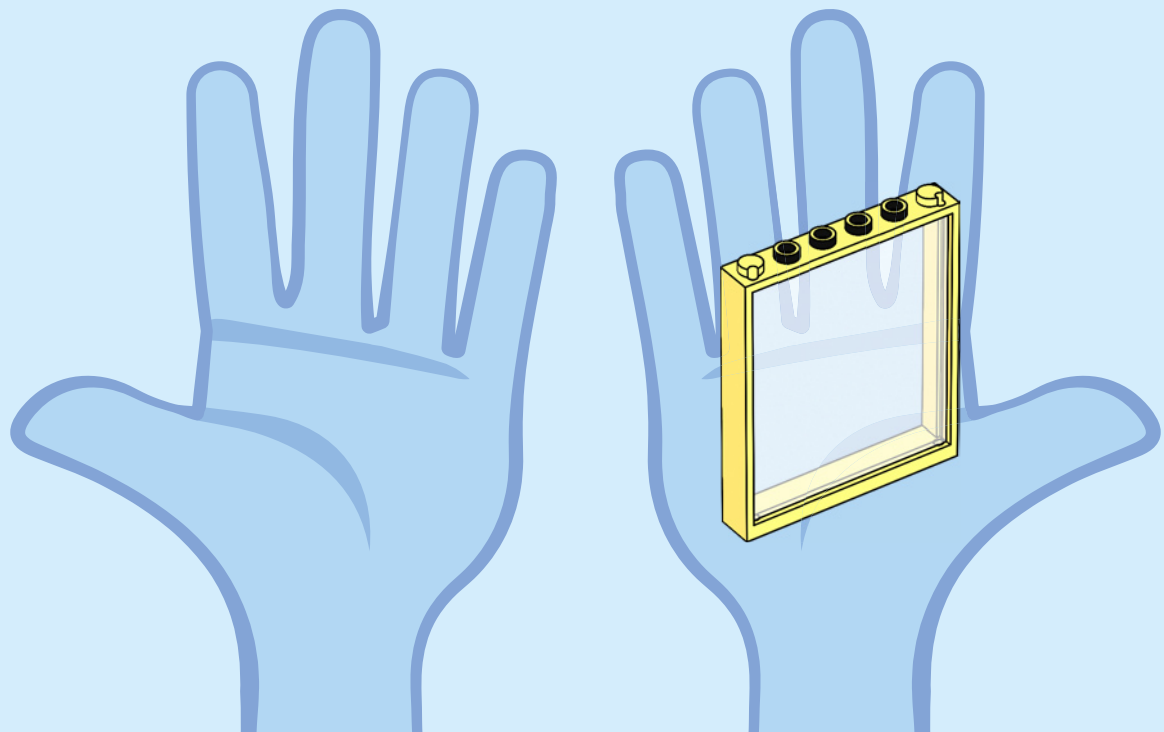


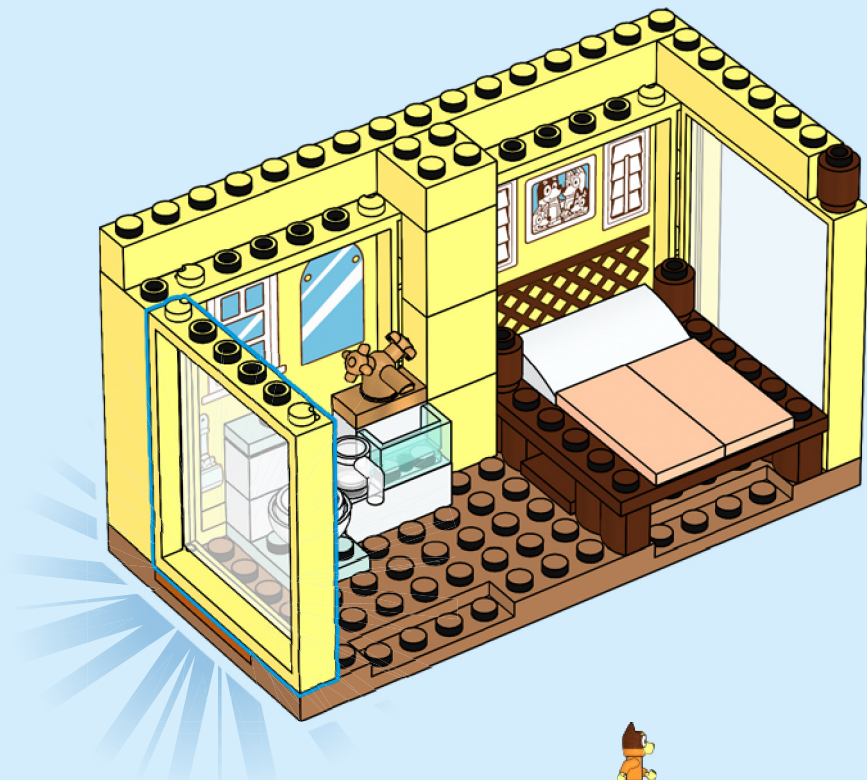


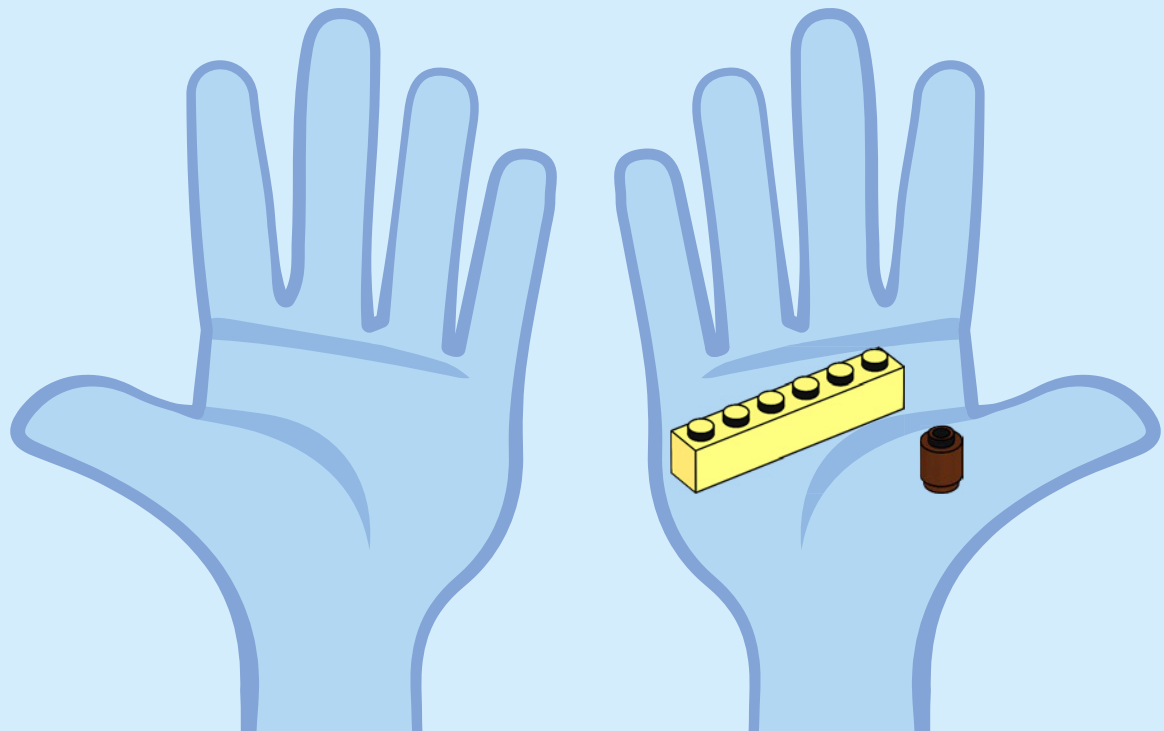


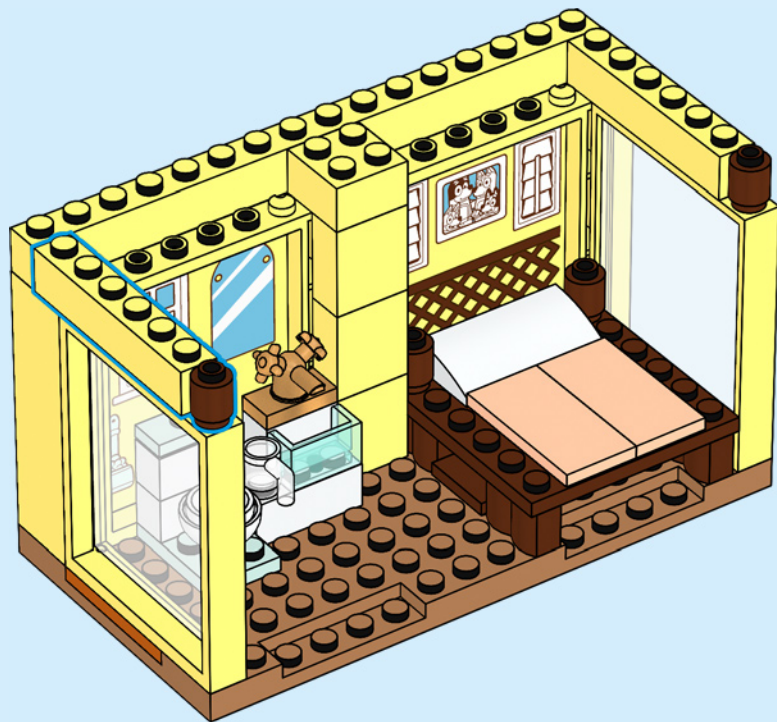


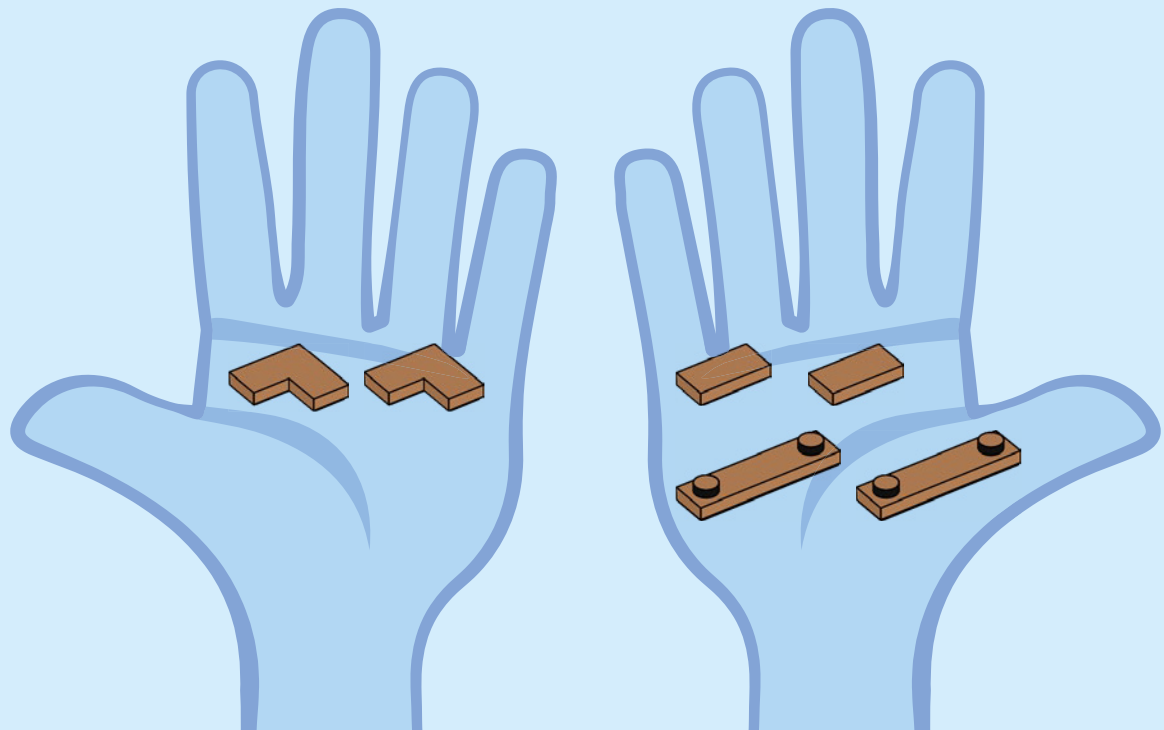


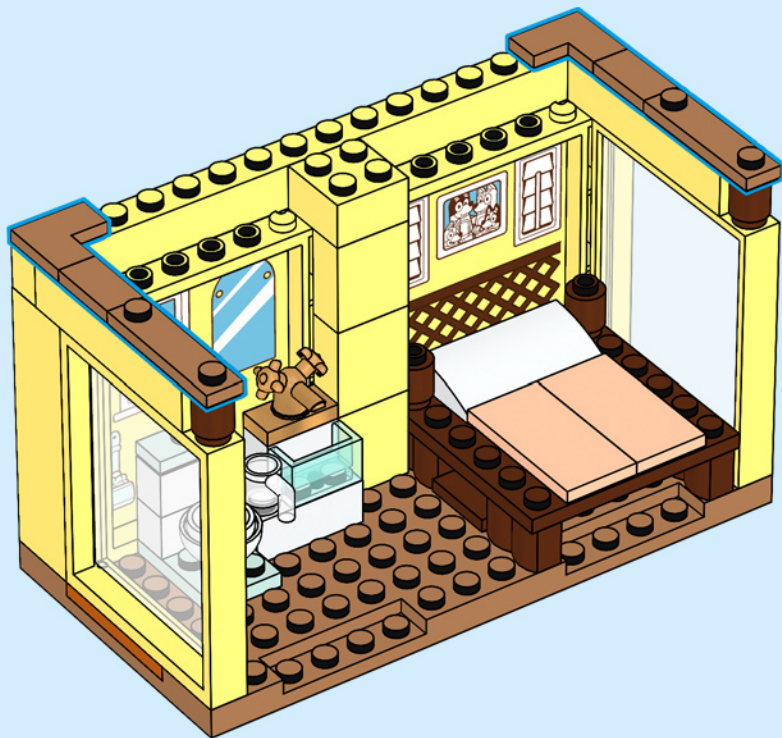


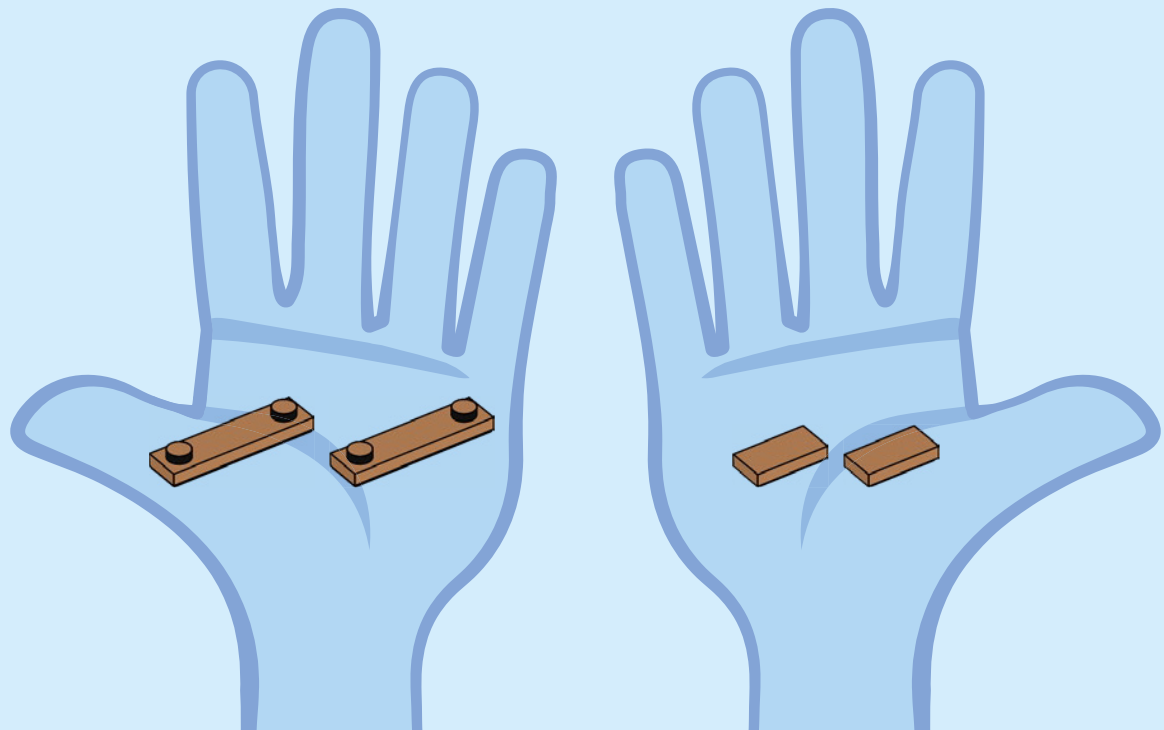


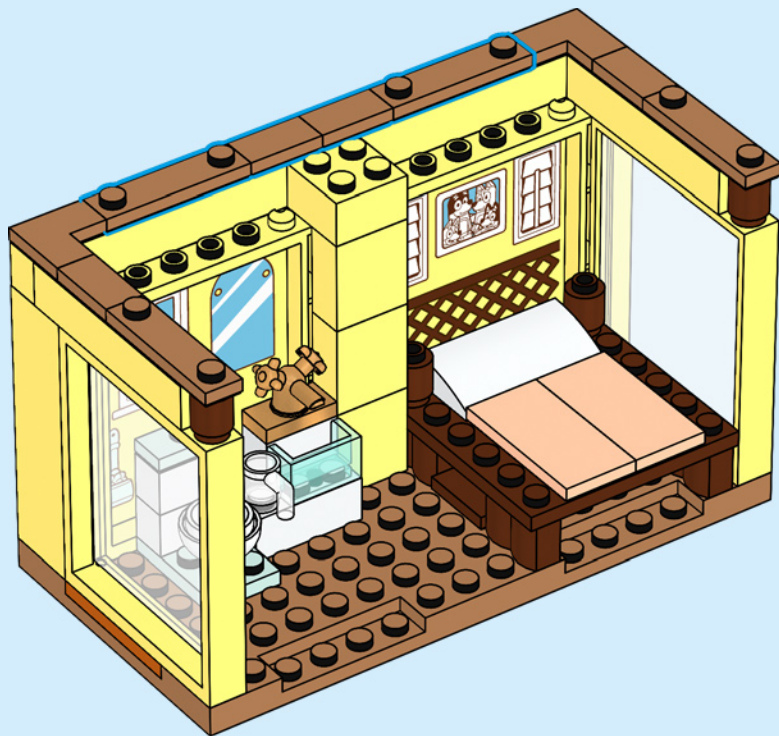






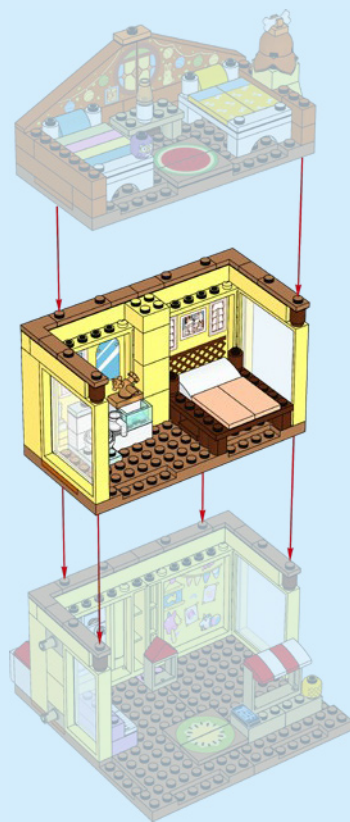




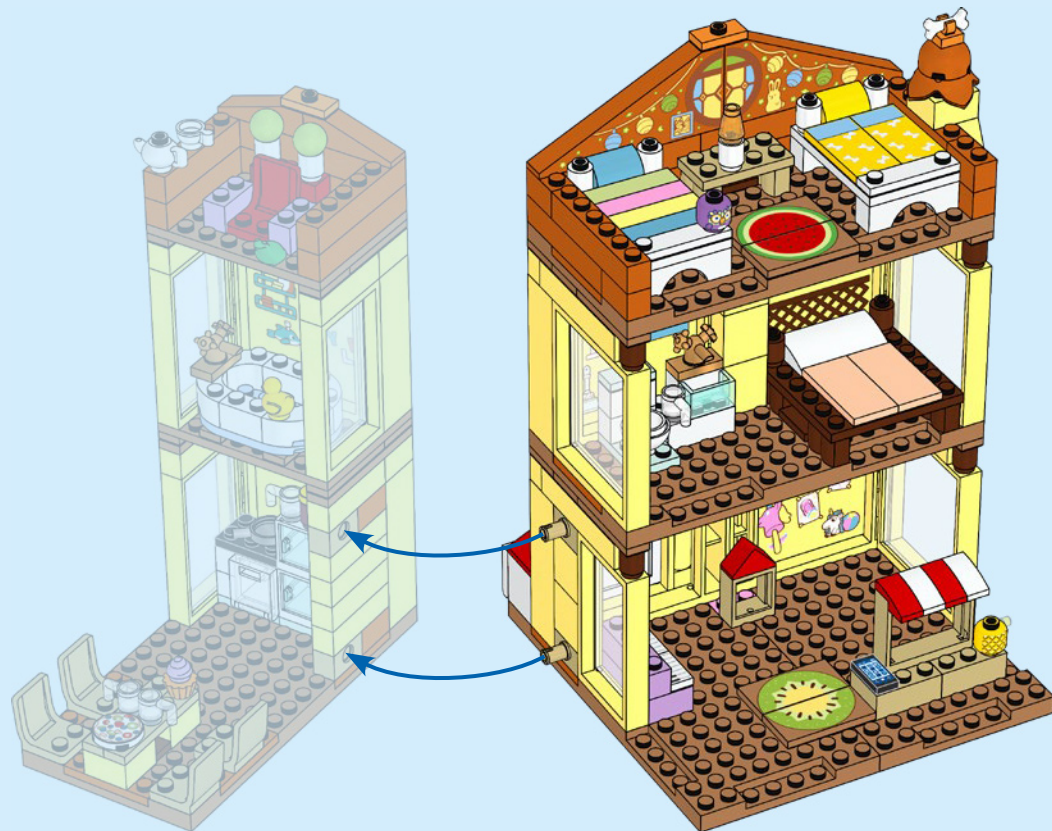
















# Rebuild the World™



LEGO and the LEGO logo are trademarks of the/sont des marques de commerce du/son marcas registradas de LEGO Group. ©2025 The LEGO Group.

BLUEY (word mark and character logos) are trade marks of Ludo Studio Pty Limited and are used under license. BLUEY logo © Ludo Studio Pty Limited 2018. Licensed by BBC Studios. BBC is a trade mark of the British Broadcasting Corporation and is used under license. BBC logo © BBC 1996



6580259