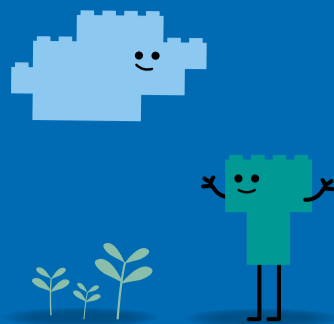
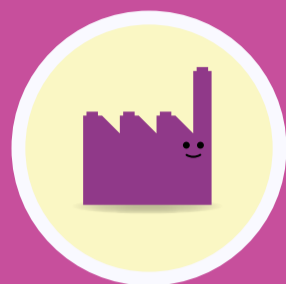


Our carbon footprint 2021

Every year, we calculate the carbon (CO₂) footprint of the LEGO Group. Understanding our climate impact allows us to take action to improve it. By 2032, we want to reduce emissions by 37%, compared to 2019 levels.



Our CO₂ emissions 2020-2021



Scope 1

Emissions from fuel use across LEGO factories, offices and stores
27,926 tCO₂e



Scope 2

Emissions from electricity use across LEGO factories, offices and stores
809 tCO₂e



Scope 3

Emissions from outside the LEGO Group operations from our supply chain
1,501,661 tCO₂e

tCO ₂ e*	2020	2021
Scope 1	21,998	27,926
Scope 2 [†]	1,348	809
Scope 3	1,153,777	1,501,661
Total emissions	1,177,123	1,530,396

*tCO₂e = tonnes of CO₂-equivalents
[†]Scope 2 emissions calculated using a market-based approach, which incorporates how renewable or non-renewable the LEGO Group's electricity purchases are

"Long-term emissions reduction is not a straight line, but we're on the right path. We know the challenge is large and urgent, and we are prepared to do what it takes."

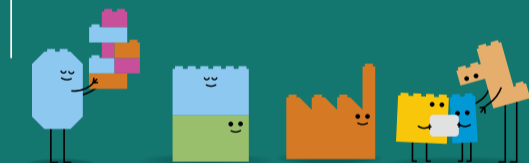
We're making investments and business decisions in sustainable materials innovation, manufacturing technology and our supply chain. These actions combined will increase our carbon footprint in the short term, but will ultimately allow us to hit our target in 2032."

Tim Brooks, VP Environmental Responsibility

Our 2021 emissions by category

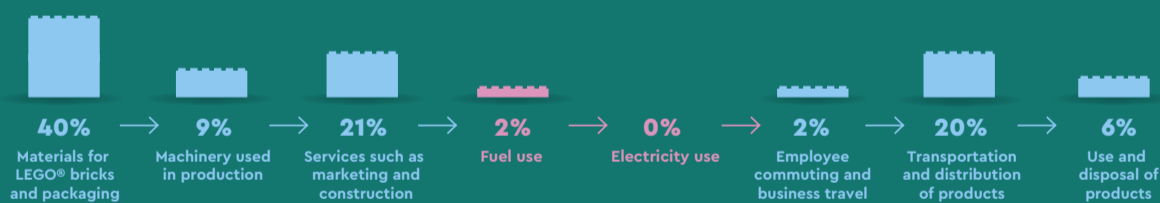
98%

CO₂ emissions from outside the LEGO Group: our supply chain



2%

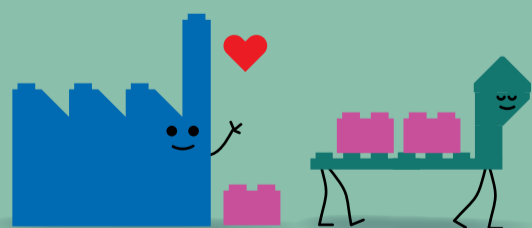
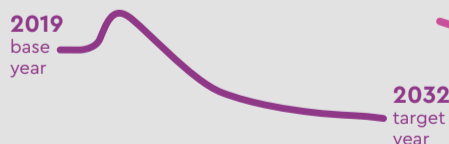
CO₂ emissions from our own operations: factories, offices and stores



Our CO₂ reduction target

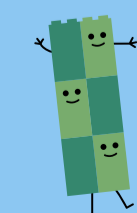
We want to minimise the environmental impact of our business and we have set an ambitious CO₂ reduction target to get us there. Our target has been approved by the Science Based Target initiative.

37% reduction in absolute emissions across scope 1, 2 and 3



Our business activities

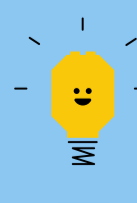
We take carbon emissions into account when making decisions for the future. In order to reduce the environmental impact from all parts of our business we are working on:



Making more LEGO® bricks using less energy



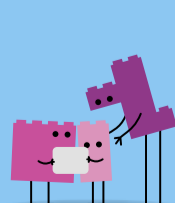
Using advanced technologies to build more sustainable factories



Building solar parks and buying renewable energy



Innovating with recycled and renewable materials



Collaborating with our suppliers to help them reduce their emissions